



SELECT PROJECT PORTFOLIO

A FEW OF THE THOUSANDS OF RANGES ACTION TARGET HAS BUILT IN OVER 50 COUNTRIES



ActionTarget.com



ACTION TARGET HEADQUARTERS

PROVO, UTAH

Action Target has been providing unique and innovative shooting range solutions since its inception in 1986. What began as a few innovators fulfilling a need for a local law enforcement agency has evolved into a world-wide industry leading corporation serving the needs of law enforcement, military and commercial organizations.

Action Target's unique start to finish approach ensures each step of the process is handled by in-house professionals with years of expertise and industry knowledge. From initial range designs, to product development, and manufacturing everything is done on-site at our facility. Action Target designs, manufactures and installs turnkey and custom shooting ranges, tactical combat houses and portable steel targets. No matter your shooting range needs, Action Target provides solutions to keep you better prepared for whatever lies ahead.



Select Project Portfolio Edition: 010118
© Copyright 2018 by Action Target, Inc.

All rights reserved. No part of this publication may be reproduced, distributed, or transmitted in any form or by any means, including photocopying, recording, or other electronic or mechanical methods, without the prior written permission of the publisher, except in the case of brief quotations embodied in critical reviews and certain other noncommercial uses permitted by copyright law. Many of the photos displayed within this book were provided by the range and are used by permission.

Action Target Inc.
3411 S Mountain Vista Pkwy
Provo, UT 84606
801.377.8033
ActionTarget.com

THE ACTION TARGET ADVANTAGE



CONSULT

Our knowledgeable range consultants guide you through each step of the process.



DESIGN

Our range design and drafting teams turn your ideas into a range that fits your needs.



ENGINEER

Our team ensures products are compliant with engineering standards and are built to last.



MANUFACTURE

Products are precisely manufactured on-site in our 125,000 square foot facility.



INSTALL

Our experienced and certified install teams work quickly to make your range operational.



SERVICE

Once your range opens, our service and maintenance team is there to keep it running.



SUPPLY

Our range supply programs have everything for your day-to-day range needs.



TRAIN

We provide training to help you get the most out of your equipment and certify your range staff.



TOTAL CONTAINMENT TRAP™



RUBBER BERM TRAP

PRODUCT OFFERING

Action Target designs, manufactures, and installs a wide variety of indoor, outdoor, commercial, law enforcement, and military range technology. This portfolio displays examples of many of these products.

BULLET TRAPS



DURABLE

Patented ballistic designs ensures that our traps can handle millions of handgun, shotgun, and rifle rounds.



SAFE & CLEAN

Collect lead fragments and dust for recycling, and keeps them from impacting ground, waterways, and air.



MODULAR

Components fit through standard doors and can be expanded to fit almost any range design.



FIRE RESISTANT

Optional rubber berm treatment is Class A ASTM E108-11 compliant, the best rating on the market.



TACTICAL

Allow for close-range and cross-lane tactical training.



STRUCTURAL

Engineered to the highest standards. Structural stamps are provided upon request.



AMERICAN SERIES



DEFENDER™



SENTRY™



GUARDSMAN™

SHOOTING STALLS



MODULAR

Interchangeable components allow for future upgrades and complete customization.



CUSTOMIZABLE

Multiple colors, ballistic panels, accessories, and table configurations are available.



BALLISTIC

Independent UL 752 and EN 1063 tests validate ballistic integrity of panels.



SERVICEABLE

Modular components enable easy maintenance and replacement as parts wear.



VERSATILE

Tactical carts, pivot tables, and dimmable lights allow for versatile use and training.



AWD PRO™



MANCOM™ TOUCH PLUS



MANCOM™ TOUCH-N-GO



SRET

TARGET RETRIEVERS



WIRELESS

The AWD Pro™ runs without the use of cables or bus bars.



ENGAGING

Preloaded programs and drills and easy-to-use interfaces keep shooters in your range.



360° TURNING

Targets can move with a full range of motion including spinning, random edging, and teasing.



FAST

Retrievers are capable of traveling up to 12 feet per second.



ACCURATE

Targets position within 1/2 inch of the desired distance.



DURABLE

Systems are specifically designed to withstand the abusive conditions inside a range.



FIXED LATERAL 360



FIXED TURNING TARGET STAND



DTAPS



DELUXE 90



POWER 90



TANDEM 90



UNIVERSAL 90

TURNING TARGETS



360° TURNING

Targets can turn 90, 180, and 360 degrees in the blink of an eye.



QUIET

Systems with electric motors operate quietly, preventing shooters from anticipating movement.



BALLISTIC

Ballistic shields, clamps, and/or downriggers are built using AR500 steel to resist bullet damage.



CONNECTED

Systems integrate with our range control software for advanced features and functionality.



INDEPENDENT

Targets may be controlled individually or simultaneously.



OUTDOOR RATED

Systems can be used both indoor and outdoor in upright or inverted configurations.

RUNNING MAN TARGETS



FAST

Targets accelerate quickly and move up to speeds as fast as the fastest sprinters in the world.



INDEPENDENT

Targets may be controlled individually or simultaneously.



CONNECTED

Systems can be controlled with central range control and on nearly any Wi-Fi enabled device.



POWERFUL

Heavy duty induction motors are strong enough to carry heavy targets.



MODULAR

Track lengths can vary from 25-200 feet and can be installed upright or inverted.



OUTDOOR RATED

Able to be used in both indoor and outdoor conditions and most climates.



DRM PRO™



TRACKRUNNER

AUTOTARGETS™



WIRELESS

Built in WiFi creates a mesh network, automatically connecting targets together in any configuration.



HIT SYNC TECH

Proprietary system recognizes hits in scoring zones and provides shot time and accuracy data.



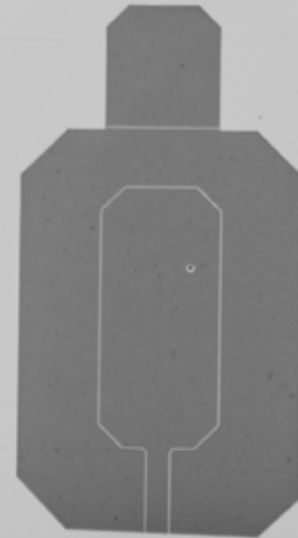
ENGAGING

Powerful app allows for complete control of targets. Custom courses of fire can be created on the fly for training and competition.



SAFE

Reactive target system without danger of splatter or ricochet for use indoor, outdoor, up close or at long range.



REACTIVE STEEL



POP-UP ACTION

Targets raise when actuated and are knocked down by accurate shots.



INDEPENDENT

Individual target control creates random target actuation for decision-making training.



BALLISTIC

Entire face of system is constructed of ballistic steel, allowing hits on chest and head plates.



STEEL KD



BOBBER



BOBBER XTREME



PNEUMATIC PLATE RACK

VENTILATION



CLEAN

Range air is cleaned from lead dust before being reintroduced to the range or released back into the atmosphere.



PURGE SYSTEM



AIR FLOW

Downrange air flow keeps the range comfortable by moving particulates away from the shooter's respiratory zone.



RECIRCULATING SYSTEM



CLIMATE CONTROL

Systems adapt to changing environmental conditions to maintain required air speed and pressure conditions.



FILTERS



INDUSTRY RANGES

Action Target ranges are trusted by many of the industry leading firearm manufacturers. Many of them have chosen Action Target to install their private test ranges. Here are just a few.



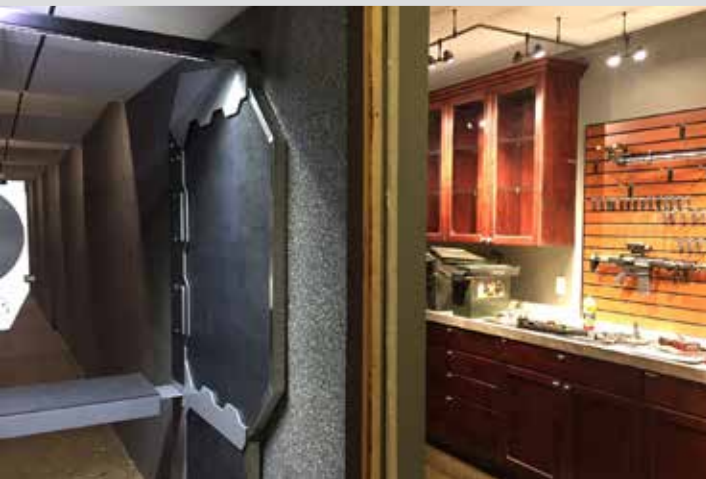


HOME RANGES

VARIOUS LOCATIONS

Admit it, as a gun lover your dream home has it's own private shooting range. We get it, our's does too. You may be surprised to know that Action Target has built a number of private home ranges. Since all of our product is modular we are able to completely install a range in basements, upstairs,

or anywhere else on your property. We can install bullet traps, target retrievers, wall and ceiling baffles, shooting stalls, range ventilation, and more. Please enjoy these examples of some of the home ranges that we've installed in locations all over the United States.





THE ALAMO BY LOTUS GUNWORKS

COMMERCIAL INDOOR SHOOTING RANGE / NAPLES, FLORIDA

The Alamo by Lotus Gunworks is a new kind of shooting range that's unlike anything you've seen before. It's design and feel hearken to the 1800's and the battle of the Alamo. Located in Naples, Florida this state-of-the-art facility is into five bays and offers private and group training for all skill levels.

The Alamo boasts 25 total shooting lanes with 19 lanes dedicated to pistol shooting. The 6 rifle-rated lanes are 38 yards long and utilize the Mancom™ Touch Plus target retriever system for faster target retrieval and advanced functionality.

The Alamo is more than a range, it's a destination.

PROJECT SCOPE

- 25 total shooting lanes
- 12 and 38 yard bays
- Total Containment Trap™
- Defender™ shooting stalls
- Mancom™ Touch Plus target retrievers
- SRET target retrievers
- Fixed position ceiling baffles



AMERICAN SHOOTERS

COMMERCIAL INDOOR SHOOTING RANGE / CLARKSVILLE, INDIANA

When you visit American Shooters you are greeted by a truly state-of-the-art shooting range. With 12 total lanes, 6 standard lanes and 6 premium lanes, American Shooters has the space to accommodate the Clarksville shooter. Both the standard and premium lanes will leave you breathless in comparison to a typical indoor shooting range, and this isn't a pun. The advanced air ventilation system cycles the air every 60 seconds keeping

the air inside the range clean and safe. American Shooters is also home of the AWD Pro™, the most advanced and engaging target retriever system available.

The range is open to the public, though members do get incredible discounts and perks. The bullet resistant glass viewing area allows guests to watch shooting activities in the range.

PROJECT SCOPE

- 12 total shooting lanes
- 25 yard shooting distance
- Total Containment Trap™
- AWD Pro™ target retrievers
- Defender™ shooting stalls with storage shelf
- PEPP sound abatement
- Recirculating climate controlled range ventilation



ANN ARBOR ARMS (A3)

COMMERCIAL INDOOR SHOOTING RANGE / ANN ARBOR, MICHIGAN

Ann Arbor Arms (A3) wanted to elevate the shooting experience from the outside-in. A great deal of attention was taken when designing the facility to be clean, inviting and modern. The same level of detail was required for the shooting range portion of the business and Action Target was chosen to be their range equipment provider and partner supplying a range solution to meet their unique design needs.

Focusing on shooter comfort, they built three 25 yard bays, using one for rifle shooting, one for pistol, and one for tactical training and classes. The tactical range has elevated baffles allowing for increased freedom of movement downrange during training courses. A3 was selected to be the first range to beta test Action Target's new AWD Pro™ target retriever system. Their feedback was instrumental in the final version of this system.

PROJECT SCOPE:

- Total Containment Trap
- Fixed and tactical ceiling baffles
- Defender™ shooting stalls
- Mancom™ Touch-N-Go target retrievers
- AWD Pro™ target retrievers
- PEPP sound abatement



ATHENA GUN CLUB

COMMERCIAL INDOOR SHOOTING RANGE / HOUSTON, TEXAS

With an atmosphere and quality level generally unseen in the shooting range industry, Athena Gun Club sets a new lofty standard. Athena Gun Club is proud to be one of the nation's premier shooting facilities. Talented staff with real world military and law enforcement experience along with exceptional shooting range products make Athena Gun Club a world class shooting destination. Action Target Total Containment Trap with Screw Conveyor Systems make collecting spent

rounds a breeze. A variety of target retrievers and shooting stall styles allow Athena to offer a unique shooting experience for shooters of any skill level. A laser driven shooting simulator allows Athena trainers to introduce new shooters to firearms without the intimidation of live rounds. The simulator also enables Athena to run experienced shooters through high stress shooting scenarios and gaming.

PROJECT SCOPE

- Total Containment Trap™
- Screw Conveyor System
- Fixed position ceiling baffles
- SRET target retrievers
- Mancom™ Touch Plus target retrievers
- Defender™ shooting stalls
- Shooting simulator



BADLANDS GUN RANGE

COMMERCIAL INDOOR SHOOTING RANGE / SIOUX FALLS, SOUTH DAKOTA

To understand the Badlands Gun Range, you have to look at the facility as a whole. It's not just a gun range, it's a gun shop, a pawn shop, a deli, a radio station, a music shop, and a concert venue. It's kind of like a little slice of Las Vegas got dropped right down into Sioux Falls, and to be honest, it's

pretty awesome. Not a single dollar was spared on amenities, which means the parts we care about (the gun shop and gun range) are clean, well lit, well laid out, and generally a nice place to pull some triggers.

PROJECT SCOPE

- 14 total lanes
- Total Containment Trap™
- Screw Conveyor System
- Mancom™ Touch Plus target retrievers
- Keypad SRET target retrievers
- Defender™ shooting stalls
- Fixed position ceiling baffles
- PEPP sound abatement
- Range ventilation system



BDC GUN ROOM

COMMERCIAL INDOOR SHOOTING RANGE / SHAWNEE, OKLAHOMA

The BDC Gun Room's indoor shooting range features 18 climate controlled lanes at 25 yards with our Total Containment Trap and Screw Conveyor System. This system allows for easy lead collection and recycling making it safer for employees, customers, and the environment. With this innovative system, lead that is collected by the steel bullet trap is safely transferred via auger from a trough beneath the patented deceleration chamber into a 55-gallon barrel located outside the range for

convenient recycling that doesn't involve direct contact with hazardous lead dust. The range also features programmable easy-to-use target retrieval systems, attractive lane dividers capable of stopping a bullet at point blank range, adjustable LED booth lighting, sound abatement technology and advanced ventilation systems which ensure a safe, enjoyable shooting experience and a high level of protection from lead and gunpowder residue.

PROJECT SCOPE

- 18 total shooting lanes
- Total Containment Trap™
- Screw Conveyor System
- Fixed position and tactical ceiling baffles
- Defender™ shooting stalls
- SRET target retrievers



BIG BOYS GUNS, AMMO, AND RANGE

COMMERCIAL INDOOR SHOOTING RANGE / OKLAHOMA CITY, OK

Looking to boost their existing retail gun store Big Boys Guns, Ammo, and Range added a shooting range to better serve their customers. Carrying the same clean look and feel from their retail space into the range gives their customers a high end experience in every aspect of their visit. The addition of the range proved to be a successful addition to their business, both in range time and retail sales.

PROJECT SCOPE

- Total Containment Trap™
- Fixed position ceiling baffles
- SRET target retrievers
- Defender™ shooting stalls
- Range ventilation system



BLACKSTONE SHOOTING SPORTS

COMMERCIAL INDOOR SHOOTING RANGE / CHARLOTTE, NORTH CAROLINA

Blackstone Shooting Sports wanted to provide the ultimate shooting experience for its customers and members, so they chose Action Target to equip the range with the most advanced technology available. The three-bay range has 27 total 25 yard lanes. The Total Containment Trap utilizes an armor steel funnel to direct bullets into a deceleration chamber where they are transferred into an exterior 55-gallon drum by the innovative Screw Conveyor System.

The range also boasts easy-to-use Mancom™ Touch Plus and Touch-N-Go target retrievers with accurate distance control, two tactical shooting bays with the potential for downrange tactical training, a rifle bay capable of handling up to .223 and .308, and one of the nicest members lounges in the country. Blackstone Shooting Sports is the perfect combination of luxury and functionality.

PROJECT SCOPE

- 27 total shooting lanes
- Total Containment Trap™
- Fixed position ceiling baffles
- Mancom™ Touch-N-Go target retrievers
- Mancom™ Touch Plus target retrievers
- Defender™ shooting stalls



BLUELINE TACTICAL

COMMERCIAL INDOOR SHOOTING RANGE / ELMSFORTH, NEW YORK

In March of 2011, Blueline Tactical opened its doors to the public as the premier tactical equipment store in the tri-state area with a product offering that includes everything from tactical gloves and body armor to firearms of all kinds. Seeing the huge demand in their area for an indoor shooting range, and after three years of planning, Blueline Tactical teamed up with Remington to build New York's premier indoor commercial range with

eight lanes equipped with tactical ceiling baffles allowing for training downrange and a two lane instruction bay. Utilizing Action Target's Total Containment Trap, Mancom™ Touch Plus target retrievers, and Defender Stalls, this range not only looks amazing but maintains the highest levels of safety with the convenience of low maintenance equipment.

PROJECT SCOPE

- Total Containment Trap™
- Tactical ceiling baffles
- PEPP sound abatement
- Mancom™ Touch Plus target retrievers
- Defender™ shooting stalls
- Range ventilation system



THE CABIN ARMORY

COMMERCIAL INDOOR SHOOTING RANGE / WILKES-BARRE, PENNSYLVANIA

NRA instructors John Mitchell and his wife Diane Murphy recognized that there weren't any ranges in their area where they felt comfortable shooting. Having formerly owned a business building custom log homes, they naturally decided to go with a cabin-style interior. To reinforce the rustic appearance of the facility, they selected earth tone stall walls from Action Target's new custom color options. The spacious two-story range is equipped with 9 ADA compliant and 10 standard lanes.

Since opening earlier this year, The Cabin Armory and Training Center has drawn countless shooters. The large, well-lit log interior provides a comfortable and inviting atmosphere that visitors thoroughly enjoy. With a 4.9/5 star rating on Google as well as rave reviews about the education and outstanding staff friendliness at The Cabin, it's clear that this range promises an unforgettable customer experience.

PROJECT SCOPE

- 2 bays, 19 total lanes
- Rubber Berm Traps
- Custom Defender™ shooting stalls
- Keypad SRET target retrievers
- PEPP sound abatement



CAPE GUN WORKS

COMMERCIAL INDOOR SHOOTING RANGE / HYANIS, MASSACHUSETTS

Cape Gun Works is a jewel of a shooting range situated on Cape Cod in Massachusetts. Cape Gun Works is a professional, licensed gun dealer with years of experience in the business. For bull's eye precision firearms, ammo, and accessories they are a solid source in New England.

In 2016 Cape Gun Works converted an indoor skateboard park and paint ball course into a beautiful firing range complete with Action Target Total Containment Traps™, Toggle SRET target retrievers, Defender™ shooting stalls, tactical ceiling baffles, and PEPP sound abatement.

PROJECT SCOPE

- 15 total shooting lanes
- Total Containment Trap™
- Toggle SRET target retrievers
- Defender™ shooting stalls
- Tactical ceiling baffles
- PEPP sound abatement



CI SHOOTING SPORTS

COMMERCIAL INDOOR SHOOTING RANGE / NORMAL, ILLINOIS

When range owner Stephen Stewart decided to retrofit part of his local strip mall into a full-service shooting range named CI Shooting Sports, he called Action Target to make it happen. Action Target installed two bays of eight lanes with Rubber Berm Traps, Defender Shooting Stalls capable of stopping and containing rifle rounds at point blank range, convenient shooting stall shelving, and user-friendly target retrieval systems for complete control of target distance.

With Action Target handling the safety and functionality details of the range, Stewart was able to focus on other essential matters like establishing community relations, designing the perfect retail store layout, and writing an amendment for future indoor shooting ranges in Illinois, for which CI Shooting Sports will be standard.

PROJECT SCOPE

- 16 total shooting lanes
- Rubber Berm Trap
- SRET target retrievers
- Defender™ shooting stalls with storage shelves



CENTENNIAL GUN CLUB

COMMERCIAL INDOOR SHOOTING RANGE / CENTENNIAL, COLORADO

Centennial Gun Club offers a high end shooting experience to the residents of the Denver area. The facility has a total of five ranges, and 44 total lanes. For those clients who want more out of their range experience a tactical simulator, and VIP lounge are also available. Combined with over 5,000 sq feet of retail space, Centennial Gun Club is a first class establishment for anyone interested in honing their shooting skills, or adding another gun to the safe.

In 2017 Centennial added a new bay that includes all the latest in fun range equipment. They now have the AWD Pro™ target retrievers with preloaded drills and games, the brand new AutoTargets system with hit sensing, and polymer bobbars that safely bring the excitement of steel bobber shooting indoors with self healing polymer material. These exciting systems provide customers the chance to shoot on their very own shooting gallery.

PROJECT SCOPE

- 44 total shooting lanes
- Total Containment Trap™
- Rubber Berm Trap
- Fixed position ceiling baffles
- Wall baffles
- Defender™ shooting stalls
- AWD Pro™ target retrievers
- AutoTargets™ with HitSync™
- Polymer Bobbers





DFW GUN RANGE

COMMERCIAL INDOOR SHOOTING RANGE / DALLAS, TEXAS

Action Target was called to help the DFW Gun Range when they needed to replace their worn out rubber block trap after a tracer round caused it to catch fire. A complete update to the range with new equipment and technology was accomplished within several months, resulting in minimal downtime and a fresh, clean look to the range. Range operations and training soon returned to serving customers in the Dallas area.

PROJECT SCOPE

- 17 total shooting lanes
- Rubber Berm Trap
- Fixed position ceiling baffles
- SRET target retrievers
- Defender™ shooting stalls
- PEPP sound abatement



EAGLE GUN RANGE

COMMERCIAL INDOOR SHOOTING RANGE / FARMERS BRANCH, TEXAS

Eagle Gun Range has been a successful shooting range in Texas for years so deciding to open a second location was easy for owners David and Nanci Prince. The Farmer's Branch range is located in a very nice Dallas suburb in a business district with hotels, restaurants, and other businesses. This location is the first range in the country to install the Action Target American Series shooting stalls. These stalls are completely customizable in color,

texture, and material. Eagle Gun Range's stalls utilize the Manhattan color scheme complete with custom murals that honor the military and the state of Texas.

Eagle Gun Range also boasts 24 lanes with AWD Pro™ target retrievers, fixed position ceiling baffles, and Rubber Berm Traps.

PROJECT SCOPE

- 24 total shooting lanes
- Rubber Berm Traps
- Fixed position ceiling baffles
- AWD Pro™ target retrievers
- Custom American Series shooting stalls
- PEPP sound abatement



EAGLE SPORTS RANGE

COMMERCIAL INDOOR SHOOTING RANGE / OAK FOREST, ILLINOIS

With interest in shooting sports growing around Chicago due to changes in state laws, Omar Ahmad recognized the immediate need for a training and retail center capable of accommodating the growing demand. Action Target was engaged early in the design process to help Eagle Sports Range set a new standard for indoor shooting ranges located near Chicago. The facility has 28 total lanes divided into two 25 yard bays with 11 lanes each

and a 50-yard bay with 6 lanes. Knowing there was potential for continued growth, a space was created to allow for an additional 11 lane range. Beyond the shooting range, Eagle Sports Range has a VIP lounge furnished with a pool table, couches, several TVs, and viewing into one of the ranges, three classrooms for continuing education and training, and an open concept retail floor with a wide variety of products.

PROJECT SCOPE:

- Total Containment Trap™
- Screw Conveyor System
- Defender™ shooting stalls
- Mancom™ Touch-N-Go Retrievers
- AWD Pro™ Retrievers
- Fixed position ceiling baffles





FIRELINE

COMMERCIAL INDOOR SHOOTING RANGE / APPLETON, WISCONSIN

Fireline Shooting and Training Center opened their first location in Rice Lake, WI and now have their second location in Appleton, WI. Fireline is owned by John LaBonte and is operated by family, son Georg and son-in-law Brandon. They also own a business that makes custom parts for motorcycles.

Fireline holds competitions (steel challenge, IPSC, USPSA) in their new range, taking advantage of the concrete lid which allows for tactical shooting down range with minimal overhead baffles. The baffles are used primarily to protect lighting and provide ballistic closure into the rubber berm bullet trap.

PROJECT SCOPE

- 14 total shooting lanes
- Rubber Berm Traps
- AWD Pro™ target retrievers
- Defender™ shooting stalls
- Mancom™ Touch-N-Go target retrievers
- Baffles to protect lighting
- PEPP sound abatement



FRISCO GUN CLUB

COMMERCIAL INDOOR SHOOTING RANGE / FRISCO, TEXAS

With 40 shooting lanes that include digitally controlled target systems, the Frisco Gun Club is designed to challenge an individual's marksmanship skills. Individual target control allows shooters to determine the difficulty level of their experience. The installed Total Containment Trap and Screw Conveyor lead collection system are the superior choice for ranges where safety, reliability, simple maintenance, and ease of use are top priorities.

The Frisco Gun Club experience goes beyond shooting featuring dining from a top chef and a cigar lounge. The VIP Lounge sets a new level in shooting range amenities with luxurious leather seating, a fireplace, and WiFi. The club also offers firearm storage, VIP shooting lanes, and after-hours biometric range access. 43,000 sq ft of total space, including over 7,000 sq ft of retail space, and a 100-person training room makes this one of the nation's largest public shooting facilities.

PROJECT SCOPE

- 40 total shooting lanes
- Total Containment Trap™
- Screw Conveyor System
- Fixed position ceiling baffles
- SRET target retrievers
- Mancom™ Touch Plus target retrievers



FRONTIER JUSTICE

COMMERCIAL INDOOR SHOOTING RANGE / LEE'S SUMMIT, MISSOURI

Frontier Justice is a next-generation firearms facility and shopping destination that includes everything from firearms and archery training, to clothing, jewelry, and home furnishings retail. With a clear mission to serve clients by providing a unique, exceptional, and memorable experience, President Bren Brown chose Action Target to equip the facility's 23 lane shooting range with the most advanced technology available. The range is broken up into three parts—a 50 yard rifle bay

capable of handling .50 BMG, a 25 yard pistol bay, and a 25 yard advanced tactical bay with turning, programmable lighted target retrieval systems for intense firearms training. All shooting bays are equipped with Action Target's Total Containment Trap which utilizes steel funnels to direct bullets into a deceleration chamber where their energy is safely dissipated and the lead can be collected for convenient recycling.

PROJECT SCOPE

- 23 total shooting lanes
- 25 and 50 yard bays
- Total Containment Trap™
- Tactical ceiling baffles
- Mancom™ Touch Plus target retrievers
- Defender™ shooting stalls
- Range ventilation system



GAT GUNS

COMMERCIAL INDOOR SHOOTING RANGE / EAST DUNDEE, ILLINOIS

In 2012, GAT Guns owner Greg A. Tropino Sr. saw that Illinois concealed carry was likely to be allowed, and knew he had to expand the capacity of his ranges to prepare for the large surge in indoor range demand. GAT decided to expand the business and add 39 new indoor shooting lanes and upgrade their existing 24 lanes including ranges that would be located on the second floor of their new building.

A wide range of Action Target equipment was used including Total Containment Trap™, Screw Conveyor Systems to automate lead collection, Mancom™ Touch Plus target retrievers, Defender™ shooting stalls. GAT also installed a range ventilation system to provide a safe and clean shooting environment. GAT guns is now one of the largest commercial indoor shooting ranges in the U.S. with 63 shooting lanes ranging from 25 to 75 yards.

PROJECT SCOPE

- 63 total shooting lanes
- Total Containment Trap™
- Screw Conveyor Systems
- Dust collection units
- Defender™ shooting stalls
- Mancom™ Touch Plus target retrievers
- Mancom™ Master Control system
- Range ventilation system



GEORGIA GUN CLUB

COMMERCIAL INDOOR SHOOTING RANGE / BUFORD, GEORGIA

Georgia Gun Club put their mark on the map by opening the first 100 yard indoor shooting range in Georgia. Along with the 100 yard range they also included an eight lane tactical pistol bay and an interactive training simulator. Combined, these facilities offer their customers a variety of shooting experiences from personal defense training to sighting in their hunting rifles. Their facilities also

feature a private members lounge for their regular clientele that want to elevate their shooting experience beyond that of a normal walk-in customer.

The range facilities and member's lounges combined with a complete retail space make the Georgia Gun Club a premier shooting destination in the state.

PROJECT SCOPE

- Total Containment Trap™
- 25 and 100 yard bays
- Fixed position ceiling baffles
- Defender™ shooting stalls
- SRET target retrievers
- Mancom™ Touch Plus target retrievers



GUARDIAN TRAINING CENTER

COMMERCIAL INDOOR SHOOTING RANGE / WARMINSTER, PENNSYLVANIA

Understanding the customer's wants and needs, providing a facility and services to meet those needs, and making the experience so enjoyable they won't want to leave was the basis of Guardian Training Center. This facility was designed from the ground up to provide the most entertaining and empowering experience available.

Guardian Training center contains four bays, a 15 yard "quiet" bay, 25 yard "heavy" bay, 25 yard "tactical" bay and 25 yard "VIP" bay. Besides these four bays it also houses a nice retail area, two classrooms, a virtual simulator, a combative center for hand to hand combat training, multi-level Sims house, VIP Lounge, conference center, and banquet hall.

PROJECT SCOPE

- 22 total shooting lanes
- Rubber Berm Traps
- AWD Pro™ target retrievers
- Mancom™ Touch Plus target retrievers
- Defender™ shooting stalls
- Fixed position and tactical ceiling baffles
- Wall to wall sound abatement



GUNS N GEAR SPORTS

COMMERCIAL INDOOR SHOOTING RANGE / IDAHO FALLS, IDAHO

Guns N Gear sports is the premier indoor shooting range and firearms retailer of Idaho Fall, Idaho, with a climate controlled range, a large classroom overlooking Snake River Landing, 4,000 square feet of retail space, an on-site gunsmith, and a firearms simulator for training and entertainment. The range is split into two bays. The first bay has 7 lanes at 25 yards, a rubber berm bullet trap capable of handling .50 BMG, spacious glass Defender

Shooting Stalls, Mancom™ AWD and Touch-N-Go target retriever systems, and an advanced ventilation and air filtration system for a comfortable and safe shooting environment. The second bay is designed for tactical training with continuous ceiling baffles for safe shooting while moving downrange and a wireless turning target retrieval systems capable of saving up to 100 training scenarios.

PROJECT SCOPE

- Rubber Berm Trap
- Mancom™ AWD target retrievers
- Mancom™ Touch-N-Go target retrievers
- Fixed position and tactical ceiling baffles
- Defender™ shooting stalls
- Range ventilation system



HOWELL'S GUN SHOP

COMMERCIAL INDOOR SHOOTING RANGE / GRAY, MAINE

It may come as no surprise that there is a serious lack of quality indoor shooting ranges in Maine, a market gap that Howell's Gun Shop is eager to fill. This quality facility is home to two 25 yard bays full of Action Target range equipment sure to keep the locals excited for years.

The bays include five fixed firing line lanes, seven hybrid tactical lanes (can be used as both fixed firing line and tactical shooting). The Mancom™

Touch-N-Go target retrievers provide simple out and back target movement with accurate positioning and the Mancom™ Touch Plus retrievers add advanced training functions such as 360° turning and strobe lights. PEPP sound abatement and the ballistic ceiling baffles provide a quiet shooting environment and the Action Target ventilation system keeps the range air clean and safe for shooters and employees.

PROJECT SCOPE

- Total Containment Trap™
- Mancom™ Touch-N-Go target retrievers
- Mancom™ Touch Plus target retrievers
- Defender™ shooting stalls
- Tactical ceiling baffles
- PEPP sound abatement
- Purge range ventilation system



HUNTER'S HOLLOW, THUNDER HOLLOW

COMMERCIAL INDOOR SHOOTING RANGE / OXFORD, MISSISSIPPI

The owners of Hunter's Hollow wanted to expand their retail gun store business and decided the addition of an indoor range was what they needed. Adding to the business required the construction of a new building that would accommodate the

upgrades to the retail space as well as the addition of the indoor range. Hunter's Hollow is now the go to location for shooting and firearms sales in northern Mississippi.

PROJECT SCOPE

- Total Containment Trap™
- Fixed position ceiling baffles
- SRET target retrievers
- Defender™ shooting stalls



INDEPENDENCE INDOOR SHOOTING

COMMERCIAL INDOOR SHOOTING RANGE / MERIDIAN, IDAHO

Independence Indoor Shooting has three indoor bays equipped with industry leading Action Target indoor range equipment. The climate HEPA filtered ventilation system provides controlled clean air and all of the bays are well lit to give customers a comfortable shooting environment. All three bays are rated for all common pistol and rifle calibers up to 50 bmg.

The 100 yard rifle bay is the only one like it in the Northwest United States and one of less than a dozen in the country. The full tactical bay has complete ballistic containment that allows shooters to shoot and move from different shooting activities and training scenarios. This bay utilizes the AWD Pro™, the most advanced programmable turning target retrievers on the market.

PROJECT SCOPE

- 21 total shooting lanes
- 25 and 100 yard bays
- Rubber Berm Traps
- AWD Pro™ target retrievers
- SRET target retrievers
- Defender™ shooting stalls
- PEPP sound abatement



JUNEAU MERCANTILE AND ARMORY

COMMERCIAL INDOOR SHOOTING RANGE / JUNEAU, ALASKA

Look no further for a real Alaskan experience. Everything about Juneau Mercantile and Armory hearkens to Alaska's rugged history and nature. Don't let the rustic look fool you as this facility is equipped with the most advanced range systems that can handle everything, including full-auto shooting.

The AWD Pro™ target retrievers boast advanced turning functions and the ability to program time drills. The Defender™ shooting stalls provide superior ballistic protection while giving the range a sleek modern look. The Mancom™ Master Control system gives range trainers the ability to manage all the target retrievers simultaneously, providing a superior firearms training atmosphere.

PROJECT SCOPE

- Total Containment Trap™
- Dust collection unit
- AWD Pro™ target retrievers
- Mancom™ Master Control
- Defender™ shooting stalls
- PEPP sound abatement



LAKEWOOD SHOOTING RANGE

COMMERCIAL INDOOR SHOOTING RANGE / LAKEWOOD, WASHINGTON

Lakewood's first and only indoor shooting range. With 16 lanes, all 25 yards long, beautiful flooring, Mancom™ Touch Plus target retrievers, Defender™ shooting stalls, fixed position ceiling baffles, PEPP sound abatement, and Action

Target range ventilation, Lakewood has everything it needs to accommodate even the most discerning customers. The Total Containment Trap™ with a Screw Conveyor System makes lead collection easy and safe.

PROJECT SCOPE

- 16 total shooting lanes
- Total Containment Trap™
- Screw Conveyor System
- Mancom™ Touch Plus target retrievers
- Defender™ shooting stalls
- PEPP sound abatement
- Range ventilation system



LOTUS GUN WORKS

COMMERCIAL INDOOR SHOOTING RANGE / JENSEN BEACH, FLORIDA

Lotus Gun Works of Jensen Beach, FL, opened its doors in the spring of 2013 and made shooting range history. This premium retail firearms store and indoor range features a double-decker shooting range with a two-story steel funnel bullet trap. Nicknamed the Lotus 8/11 for the number of steel panels used to create it (eight panels on the bottom slope and 11 panels on the top slope),

this version of Action Target's Total Containment Trap is the first of its kind. The range features 16 lanes (8 on the bottom floor and eight on the upper floor) with Action Target ballistic stall walls, tactical baffle system, D-TaPS turning target system, and a custom Total Containment Trap. It also features Mancom™ Touch-N-Go target retrievers and a range ventilation system.

PROJECT SCOPE

- 16 lane double-decker range
- Total Containment Trap™
- Mancom™ Touch-N-Go target retrievers
- D-TaPS turning targets
- Defender™ shooting stalls
- Fixed position ceiling baffles
- Range ventilation system



MACHINE GUN AMERICA

COMMERCIAL INDOOR SHOOTING RANGE / ORLANDO, FLORIDA

Machine Gun America is located just minutes away from Disney World and can possibly rival the theme park for entertainment value. With 10 indoor shooting lanes, three Ti Training firearms simulators, and just about every type of machine gun imaginable available for rent, Machine Gun America lives up to its name. Because of its high-volume nature, Action Target was chosen to equip

the range with its Total Containment Trap, a steel funnel bullet trap capable of safely containing all rounds sent downrange while providing an easy and safe way to collect and dispose of lead. Action Target also installed easy-to-use target retrieval systems with individual distance controls for a personalized experience for anyone from novices to experienced gunslingers.

PROJECT SCOPE

- Total Containment Trap™
- Fixed position ceiling baffles
- SRET target retrievers
- Defender™ shooting stalls with storage shelves and a tactical cart



MAGNUM SHOOTING CENTER

COMMERCIAL INDOOR SHOOTING RANGE / COLORADO SPRINGS, COLORADO

Magnum Shooting Center is a top-quality yet affordable indoor shooting complex located in Colorado Springs, Colorado. With 24 total indoor shooting lanes ranging from 25 to 100 yards in length and training courses offered on a variety of topics, Magnum Shooting Center is quickly becoming the shooting destination of central Colorado. Action Target was contracted to provide the equipment for the range including

Defender Shooting Stalls capable of stopping and containing bullets from point blank range, user friendly target retrieval systems, ceiling baffles for containment of errant shots, and the Total Containment Trap, a patented steel funnel bullet trap rated for .50 BMG. The range also includes a ventilation system that exceeds NIOSH, EPA, and OSHA air quality standards, creating a shooting environment that is safe and clean.

PROJECT SCOPE

- 24 total shooting lanes
- 25 and 100 yard bays
- Total Containment Trap™
- Fixed position ceiling baffles
- SRET target retrievers
- Defender™ shooting stalls
- Range ventilation system



NARDIS GUN CLUB

COMMERCIAL INDOOR SHOOTING RANGE / SAN ANTONIO, TEXAS

Nardis Gun Club is proud to be San Antonio's premier indoor gun range. This state-of-the-art facility features 12 lanes at 25 yards per lane for pistol and/or rifle use. The facility utilizes the finest range equipment to provide a fun and safe shooting environment. Nardis Gun Club is utilizing a top-of-the-line Total Containment Trap with a Screw Conveyor System to collect lead. This system is the dominant industry standard for modern,

heavy duty, steel bullet traps. It incorporates the strengths and eliminates the weaknesses of other traps, and is the superior choice for ranges where safety, reliability, simple maintenance, and ease of use are top priorities. It is the most advanced, most effective, and safest bullet collection and disposal system available. In addition, Nardis Gun Club is using a Mancom™ Touch Plus turning target retriever system.

PROJECT SCOPE

- Total Containment Trap™
- Screw Conveyor System
- Dust collection unit
- Mancom™ Touch Plus target retrievers
- Fixed position ceiling baffles
- Defender™ shooting stalls



NRA HEADQUARTERS

COMMERCIAL INDOOR SHOOTING RANGE / FAIRFAX, VIRGINIA

The National Rifle Association approached Action Target at the 2009 SHOT Show looking for help with their headquarters range. The range sees over five million rounds shot annually, and their existing trap was messy, had breaches, and required a huge amount of maintenance to keep the trap operational. Action Target accepted the challenge of removing their existing trap and installing the open throat Total Containment Trap.

Lead removal from the range was another challenge, considering the range is in the basement of the NRA headquarters building. Action Target installed a 70 foot Screw Conveyor System with an output to the parking garage. A Dust collection unit was also installed to remove lead dust from the air. This NRA range is by far one of the busiest in the world, and requires the most durable equipment available.

PROJECT SCOPE

- Total Containment Trap™
- Screw Conveyor System



NEXUS

COMMERCIAL INDOOR SHOOTING RANGE / DAVIE, FLORIDA

Nexus is a next generation, advanced technology gun store and range. As one of the largest ranges in the nation, Nexus has divided their 40 lanes into 8 bays, including a VIP Suite, allowing for a completely private experience with family, friends, groups, events, or parties. With 22 lanes of live fire video training technology and 18 standard lanes

with fixed and tactical baffles, Nexus has created an all new way of training and hosting shooting competitions. The live-fire system is still one of the most revolutionary shooting experiences in the world, with the ability to change standard fire-arms into a video game. Nexus is truly a shooting range like no other.

PROJECT SCOPE

- 40 total shooting lanes
- 9 and 25 yard bays
- Total Containment Trap™
- Screw Conveyor System
- Dust collection unit
- SRET target retrievers
- Fixed and tactical ceiling baffles
- Live Fire video training



NORTHSHORE SHOOTING SPORTS

COMMERCIAL INDOOR SHOOTING RANGE / LAKE FOREST, ILLINOIS

North Shore Sports Club is the epitome of an up-scale business with services and amenities mirroring the country and yacht clubs present in Illinois. Xiaoda, the owner, wanted to create an environment that would feel familiar to what his neighbors and business associates were accustomed to, bringing the shooting sports to the forefront of recreational activities in Northern Chicago. His facility has a burger bistro, members only lounge

with a private entrance, classrooms, and lockers in addition to his two 10 lane indoor shooting ranges. Each range is equipped with Action Target's Total Containment Trap™, ceiling baffle system, Defender™ shooting stalls, and Mancom™ Touch-N-Go target retrievers. Special design considerations were made to allow for machine gun rentals—including the infamous Tommy Gun that ruled the streets of Chicago in the 1920s and 30s.

PROJECT SCOPE:

- Total Containment Trap™
- Fixed position ceiling baffles
- Defender™ shooting stalls
- Mancom™ Touch-N-Go target retrievers



PACIFIC INDOOR TACTICAL

COMMERCIAL INDOOR SHOOTING RANGE / OAK HARBOR, WASHINGTON

Pacific Indoor Tactical (The P.I.T.) is a half tactical, indoor gun range located in Oak Harbor, Washington. The tactical portion of the range uses full tactical ceiling baffles to allow advanced “move-and-shoot” training and competitions down range. The range also has 13 lanes with

Guardsman™ shooting stalls that are at least four foot wide. Each lane is equipped with turning SRET target retrievers that have four distance presets, edging capability, and 180 degrees of rotation to allow “shoot-no-shoot” training.

PROJECT SCOPE

- 13 total shooting lanes
- 25 yard shooting distance
- Rubber Berm Trap
- Turning SRET target retrievers
- Guardsman™ shooting stalls
- Tactical ceiling baffles
- Sound abatement



POINT BLANK – CINCINNATI WEST

COMMERCIAL INDOOR SHOOTING RANGE / CINCINNATI, OHIO

Point Blank Cincinnati West is owner Tom Willingham's second commercial shooting range in Ohio. This advanced facility has two shooting bays of 10 lanes each (one 25 yards long and one 50 yards long) and is only the fourth shooting range in the world to be equipped with the cutting edge Mancom™ AWD Wireless Target Retriever. With its high speed, wireless, lighted 360 degree turning capabilities, it allows shooters to train in a realistic and safe manner with no concern for down time due

to retriever issues of the past. With the addition of Action Target's Total Containment Trap, Safety Baffle System, Defender Shooting Stalls, and target systems, shooters can safely shoot calibers up to and including .50 BMG. Shooters can also enjoy a comfortable environment with climate controlled air ventilation to remove dangerous lead particles from the air and PEPP sound material to reduce the reverberation of gun fire.

PROJECT SCOPE

- Total Containment Trap™
- Screw Conveyor System
- Fixed position ceiling baffles
- Defender™ shooting stalls
- Rifle blast shields
- Mancom™ Touch-N-Go target retrievers
- Mancom™ AWD target retrievers
- PEPP sound abatement



THE RANGE AT 355

COMMERCIAL INDOOR SHOOTING RANGE / BOLLINGBROOK, ILLINOIS

The Range at 355 offers a state-of-the-art experience to all customers, from beginners to avid shooters. This facility houses two shooting bays, the first equipped with the Action Target Mancom™ Touch Plus target retriever system with 360° turning capabilities. The Touch Plus system is also highly programmable. Defender™ shooting

stalls with muzzle blast barriers help minimize noise in adjoining lanes.

The second bay is equipped with Mancom™ Touch-N-Go target retrievers that allow shooters to send their target to a user programmed distance.

PROJECT SCOPE

- 16 total shooting lanes
- 25 yard shooting distance
- Total Containment Trap™
- Mancom™ Touch Plus target retrievers
- Mancom™ Touch-N-Go target retrievers
- Defender™ shooting stalls
- Fixed position ceiling baffles



THE RANGE AT AUSTIN

COMMERCIAL INDOOR SHOOTING RANGE / AUSTIN, TEXAS

The Range at Austin is one of the finest precision shooting range in the country. The 52,000 square foot facility encompasses more than a targeting range. This fully integrated entertainment facility is the preferred location for seasoned shooters and a welcoming environment for curious beginners. This is shown in the beautiful interior design, the various VIP and meeting spaces, and the customized Defender™ shooting stalls.

The Range at Austin offers a VIP membership option to their “Patriot Club” which is truly a unique experience. They strive to create a comfortable, accommodating atmosphere where one can enjoy their favorite shooting pastime with friends and family or meet with clients and associates. They provide subtle luxury with lone star state pride in the safest environment possible.

PROJECT SCOPE

- 37 total shooting lanes
- 25 and 100 yard bays
- Total Containment Trap™
- AWD Pro™ target retrievers
- SRET target retrievers
- Defender™ shooting stalls with custom colors





RANGE 54

COMMERCIAL INDOOR SHOOTING RANGE / WICHITA, KANSAS

Action Target partnered with Ken G. and Kerry C. early in 2015 to design and build the shooting range portion of their new business. Range 54 is named after U.S. Route 54 which connects Texas to Illinois. Sitting in the midst of America's heartland, Range 54 embodies the values and traditions of the Midwest focusing on providing a family friendly atmosphere that can be enjoyed by people of all ages. Their three 8 lane bays are visible through ballistic glass from the main

retail floor, allowing shoppers to see how the ranges operate before entering and shooting on either the AWD Pro™ retrievers or the Mancom™ Touch-N-Go retrievers. Range 54's third bay uses a unique hybrid baffle set up to allow for classes and competitions to be held in a 10-yard tactical area downrange while maintaining a typical baffle layout in the remaining 15 yards closest to the lane dividers.

PROJECT SCOPE:

- Rubber Berm Traps w/Class A fire retardant
- Fixed position ceiling baffles
- AWD Pro™ target retrievers
- Defender™ shooting stalls with Tactical Carts
- Mancom™ Touch-N-Go target retrievers



THE RANGE OF RICHFIELD

COMMERCIAL INDOOR SHOOTING RANGE / RICHFIELD, WISCONSIN

Range owner Jim Babiasz wanted to provide a convenient, comfortable, and environmentally friendly place for the people of Richfield, Wisconsin, to enjoy shooting and receive firearms training. To do that, he worked with Action Target to design and build two 6 lane shooting bays and a large retail store called The Range of Richfield. The shooting ranges feature Action Target's patented Total Containment Trap, a steel funnel

bullet trap that directs any round fired downrange into a deceleration chamber where its energy is safely dissipated and the bullet can be collected for easy recycling. The range is also equipped with an advanced ventilation system that pushes smoke and hazardous lead dust downrange away from shooters and filters out 99.9% of airborne particles before the air is pumped outside even cleaner than when it came in.

PROJECT SCOPE

- Total Containment Trap™
- Fixed position ceiling baffles
- Mancom™ Touch Plus target retrievers
- Defender™ shooting stalls (including a pivot table for downrange access)
- Range ventilation system



READY GUNNER

COMMERCIAL INDOOR SHOOTING RANGE / OREM, UTAH

Owner Neal Currey has run Ready Gunner as a successful gun store for many years, but he always dreamed of one day owning his own range. Once the opportunity presented itself, Neal moved Ready Gunner to its current location where it is now home to a shooting range with the latest product from Action Target.

Ready Gunner boasts 15 lanes with a 25 yard shooting distance. The Action Target ventilation system provides clean air to the range. The AWD Pro™ target retrievers provide shooters a fun, worthwhile shooting experience. The tactical range allows Ready Gunner to host advanced firearms classes all in a safe, 180° shooting atmosphere.

PRODUCT SCOPE

- 15 total shooting lanes
- Total Containment Trap™
- Screw Conveyor System
- AWD Pro™ target retrievers
- SRET target retrievers
- Fixed and tactical ceiling baffles
- PEPP sound abatement
- Purge range ventilation system with evaporative cooling



RED DEER SHOOTING CENTRE

COMMERCIAL INDOOR SHOOTING RANGE / RED DEER COUNTY, ALBERTA, CANADA

Red Deer Shooting Centre is Central Alberta's first and only state-of-the-art indoor shooting range and training facility. With two 6 lane shooting bays at 25 and 50 yards, Red Deer offers flexibility and a comfortable place for shooters to hone their skills during any season. The 25 yard "Alpha" range features an Action Target rubber berm bullet trap capable of safely containing handgun, shotgun, and rifle rounds including .50 BMG as well as a user-friendly target

retrieval system with on-board carrier lighting for easy target visibility. The 50 yard "Bravo" range utilizes the same robust bullet trap but with an enhanced target retrieval system capable of conducting training scenarios with turning, edging, and teasing functionality. Both ranges include acoustical sound dampening technology and advanced air ventilation systems for a safe and comfortable indoor shooting experience.

PROJECT SCOPE

- Rubber Berm Trap
- Mancom™ Touch Plus target retrievers
- Defender™ shooting stalls



RENDEZVOUS RANGE

COMMERCIAL INDOOR SHOOTING RANGE / LOGAN, UTAH

Al's Sporting Goods has been the go to sporting goods retailer in northern Utah for many years. In 2014 they decided to expand the business by relocating to a larger location, and include a shooting range as part of the larger building. Adding a 10 lane range gave their already established customer base even more reason to pay a visit to Al's Sporting Goods.

Calling the range the "Rendezvous Range" after a local spot where frontier traders would meet to deal in their goods added an extra flare to the project. The finishing touch on the project was aided by the Utah's Governor, who helped cut the ribbon on the grand reopening of the new expanded location.

PROJECT SCOPE

- 10 lane indoor range
- Total Containment Trap™
- SRET target retrievers
- Defender™ shooting stalls
- Range ventilation system



RELOAD RANGE

COMMERCIAL INDOOR SHOOTING RANGE / TARPON SPRINGS, FLORIDA

ReLoad is a next-generation firearms facility, and is currently the largest indoor shooting range facility in the southeastern states. This large facility offers a high end shooting experience to the residents of Tarpon Springs and the surrounding communities. There are 5 separate bays, one of which has 7 lanes with a 100 yard shooting distance. Every bay has ballistic viewing windows with the lane numbers above them and comfortable seating for spectators to safely watch. If you

don't want to go in the range with your family or friends you can easily find and watch them by going to the window with the lane number they are given to shoot on. ReLoad also offers a 360 degree simulator experience to test and improve your skills as a shooter. When you're all done, you can sit and relax at their snack bar, or browse around ReLoad's high end retail store that has a wide variety of guns and accessories.

PROJECT SCOPE

- 45 total shooting lanes
- 15, 25, and 100 yard distances
- Total Containment Trap™
- Screw Conveyor System
- Fixed and tactical ceiling baffles
- Mancom™ Touch-N-Go and Mancom™ Touch Plus retrievers
- Defender™ shooting stalls
- DTaPs turning target system



RICH'S GUN SHOP

COMMERCIAL INDOOR SHOOTING RANGE / DONALD, OREGON

Already one of Oregon's most complete firearms dealer, Rich's Gun Shop is also home to a shooting gallery that hearkens back to the old west and early 20th century galleries that used to be found all around the country. This shooting gallery allows guests to enjoy shooting on a lever action 22 rifle in a ballistically safe environment. What is found behind the gallery is as important as anything else. Rich's Gun Shop uses a Total Containment

Trap™ and fixed position ceiling baffles to ensure that every round is safely captured and collected for recycling.

Beyond the 22LR shooting gallery Rich's Gun Shop is home to a standard firing range with SRET target retrievers. No matter your shooting needs, Rich's has what you need.

PROJECT SCOPE

- Total Containment Trap™
- SRET target retrievers
- Defender™ shooting stalls
- Fixed position ceiling baffles



ROCKY MOUNTAIN GUN CLUB

COMMERCIAL INDOOR SHOOTING RANGE / GRAND JUNCTION, COLORADO

Nestled on the Western Slope of Colorado's Rocky Mountains, in Grand Junction you will find Rocky Mountain Gun Club. This facility is one of a kind in the region. The range boasts 40,000 climate-controlled sq ft, a 12 lane tactical rifle bay, 12 handgun lanes, solid-filled walls with wall baffles, an archery bay, a full-service retail shop and gunsmithing facility, an entire floor of classroom and education space, and a host of technological

and safety amenities. The four foot wide tactical rifle bays have solid ballistic steel panels and are Rhino-lined to add a layer of safety against possible ammo fragmentation. A golf driving range-style roller picks up all the brass.

Education is a major component at the facility, with more than 10,000 sq ft in classroom and event space.

PROJECT SCOPE

- 24 total shooting lanes
- Total Containment Trap™
- Dust collection unit
- Fixed position ceiling baffles
- Wall baffles
- SRET target retrievers
- D-TaPS turning targets
- Runner-120 moving target



S&D SHOOTING RANGE

COMMERCIAL INDOOR SHOOTING RANGE / NICHOLASVILLE, KENTUCKY

Action Target was charged with creating a high-end facility that would be a new experience for shooters at S&D Indoor Gun Range in Nicholasville, KY. This remarkable facility includes toggle switch SRET target retrievers for ease of use, and all range activity is done under the watchful eye of the RSO through clear Lexan

glass Defender Shooting Stalls. In addition, the Total Containment Trap and PEPP sound material provide superior comfort and safety. The Action Target equipment, safety features, and range ventilation, make this facility one of the premier indoor ranges in its region.

PROJECT SCOPE

- 50 foot Total Containment Trap™
- Fixed position ceiling baffles
- SRET target retrievers
- Defender™ shooting stalls
- PEPP sound abatement
- Range ventilation system



SACRAMENTO GUN CLUB

COMMERCIAL INDOOR SHOOTING RANGE / SACRAMENTO, CALIFORNIA

The Sacramento Gun Club is a 40,000 square foot facility that hosts a variety of Action Target products. The 34 lanes offer shooting distances of both 25 and 50 yards. The Rubber Berm Trap, Defender Shooting Stalls, and ceiling baffles ensure each shooter has a comfortable and safe

range experience. Beyond the shooting range, the club also has classrooms, simulation rooms, and a variety of gunsmith services. Sacramento Gun Club offers a full-service experience for all of its visitors.

PROJECT SCOPE

- 36 total shooting lanes
- 25 and 50 yard shooting bays
- Rubber Berm Trap
- Fixed position ceiling baffles
- SRET target retrievers
- Defender™ shooting stalls
- Sound board



SAKONET RIVER OUTFITTERS

COMMERCIAL INDOOR SHOOTING RANGE / TIVERTON, RHODE ISLAND

Sakonnet River Outfitters is one of Rhode Island's premier gun stores and indoor shooting ranges. They offer a wide variety of firearms, ammo and accessories, including holsters, mace, clothing, cleaning supplies, magazines and much more. The rifle-rated 25 yard indoor range is one of the

brightest and cleanest in the state. The Action Target purge ventilation system provides a clean and safe shooting atmosphere. Sakonet River Outfitters is highly rated by its customers and is definitely worth the visit if you're in Rhode Island.

PROJECT SCOPE

- 8 total shooting lanes
- Total Containment Trap™
- Mancom™ Touch-N-Go target retrievers
- Defender™ shooting stalls
- Fixed position ceiling baffles
- PEPP sound abatement
- Purge range ventilation system



SHARPSHOOTERS USA

COMMERCIAL INDOOR SHOOTING RANGE / ROSWELL, GEORGIA

Action Target was able to provide Sharpshooters USA with the ballistic containment and targetry equipment for their 24 lane indoor shooting range. This showcase facility provides shooters a comfortable and safe atmosphere to learn and improve their shooting skills with both pistols and rifles. Each lane is equipped with Mancom™ Instructors Series clear glass stalls and Touch-N-Go target retrievers with a local control key pad. The Total Containment Trap captures rounds and

a Screw Conveyor System with a Dust collection unit allows for a clean and easy way to recycle lead. The 24 lanes are divided into three separate eight lane bays with a shooting distance of up to 25 yards. Two lanes are designed for .50 caliber rifle use. Two bays are also designed for fixed shooting from the stall, for civilians, while the third bay has a tactical shooting design with fixed stalls, which is used by numerous law enforcement agencies and SWAT teams.

PROJECT SCOPE

- 24 total shooting lanes
- Total Containment Trap™
- Fixed position and tactical ceiling baffles
- Mancom™ Touch-N-Go target retrievers
- Mancom™ Instructors Series shooting stalls
- D-TaPS turning targets



SHEEPDOG FIREARMS

COMMERCIAL INDOOR SHOOTING RANGE / TRUSSVILLE, ALABAMA

Sheepdog Firearms offers high quality customer service and expertise in their gun store and indoor shooting range facility. The owners of Sheepdog Firearms had the goal in mind to offer a comfortable shooting experience and great training to their customers as they designed and built their facility. Their Law Enforcement (local and federal) and Military background influenced their goal of providing a safe environment for guests while

providing them with the skills needed to stay safe in the community. The range was designed with 4 foot and 5 foot shooting lanes which offers a comfortable space for the shooter and for training to occur. The 25 yard bay is equipped with a tactical baffle system, which allows more advanced training for customers and local law enforcement agencies.

PROJECT SCOPE

- 18 total shooting lanes
- 15 and 25 yard bays
- Total Containment Trap™
- Fixed and tactical ceiling baffles
- Keypad SRET target retrievers
- Power 90 turning target system
- Defender™ shooting stalls
- PEPP sound abatement



SHOOT STRAIGHT – CLEARWATER

COMMERCIAL INDOOR SHOOTING RANGE / CLEARWATER, FLORIDA

Shoot Straight has been in the gun sports industry since 1979, and is the largest gun dealer in Florida. The Clearwater location is just one of eight Shoot Straight ranges located in Florida and provides the same quality shooting experience that can be found in any of their facilities. With both a handgun and rifle range combined

with Rubber Berm Traps, customers can shoot up to .44 Magnum or .375 H&H Magnum, including full-auto shooting (for customers with Class 3 licenses). Defender Shooting Stalls and SRET target retrievers allow customers to customize their visit, getting the training, practice, or fun they came to experience.

PROJECT SCOPE

- Rubber Berm Trap
- Fixed position ceiling baffles
- SRET target retrievers
- Defender™ shooting stalls



SHOOTERS WORLD

COMMERCIAL INDOOR SHOOTING RANGE / TAMPA, FLORIDA

With the assistance of Action Target, the ownership of Shooters World converted a furniture store into a massive indoor commercial shooting range. This impressive range houses three shooting bays with nine 25 yard lanes each and seven 100 yard lanes. Each of these bays are equipped with the Total Containment Trap with the Screw

Conveyor System which ensure that all rounds are safely contained and collected. Furthermore, the Action Target Mancom™ AWD target retrievers, solid modular Defender Shooting Stalls and range ventilation system create a clean, safe and user-friendly atmosphere for shooters.

PROJECT SCOPE

- 34 total shooting lanes
- 25 and 100 yard bays
- Fixed position ceiling baffles
- Mancom™ AWD target retrievers
- Defender™ shooting stalls



SKAGIT INDOOR RANGE

COMMERCIAL INDOOR SHOOTING RANGE / BURLINGTON, WASHINGTON

Skagit Shooting Range is the first public-indoor shooting range in Skagit County. This advanced, 25 yard, 16 lane, shooting facility brings both precision and familiarity to the firearm experience. With a wide selection of firearm training classes and special events Skagit is able to create a variety of shooting experiences. The staff is prized as

being both personable and knowledgeable, and promises a safe and clean environment. The facility has both pistol and rifle bays, and a selection of over 100 rental firearms. The ranges are rated for all pistol calibers and 22, .223/5.56 and 7.62 x 39 for rifle.

- 16 total shooting lanes
- Rubber Berm Traps
- SRET target retrievers
- Defender™ shooting stalls
- SmartRange master control



SKY RANGE, SOLAIRE RESORT

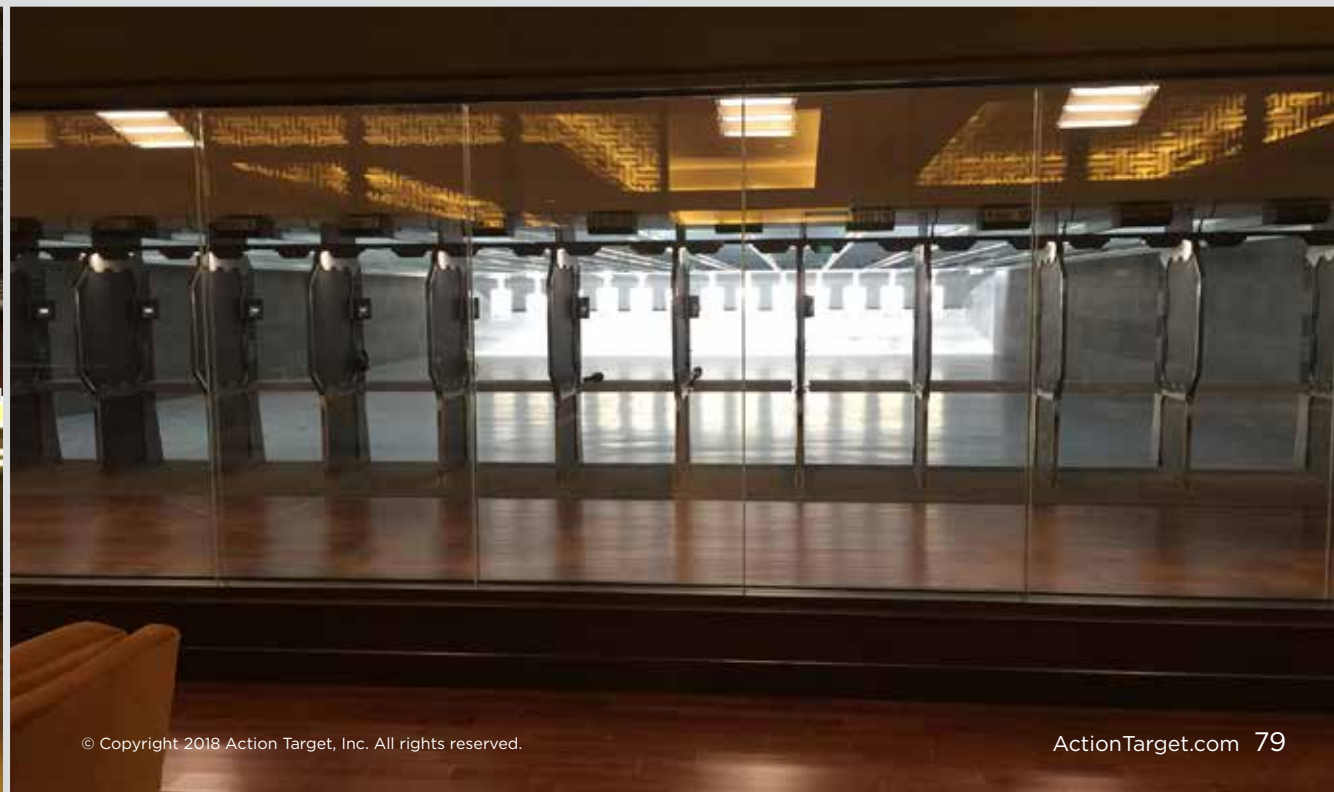
COMMERCIAL INDOOR SHOOTING RANGE / MANILA, PHILIPPINES

Solaire Resort in Manila, Philippines has everything that a vacationer could ever want, including a world class shooting range. Sky Range was added to Solaire in 2016 and is home to some of Action Target's most advanced equipment. This beautiful two bay range utilizes the Total Containment Trap, Defender™ shooting stalls and

Mancom™ target retrievers. The 50-meter range has hybrid ceiling baffles allowing the full length to be used for fixed position firing and the final 25 meters for tactical training. The facility's lounges are comfortable and decorated to provide a country club atmosphere for guests to Sky Range.

PROJECT SCOPE

- 20 total shooting lanes
- 25 and 50 meter bays
- Total Containment Trap™
- Dust collection unit
- Fixed position and tactical ceiling baffles
- Defender™ shooting stalls
- Mancom™ Touch-N-Go target retrievers
- Mancom™ Touch Plus target retrievers





SMOKIN' GUN WORX

COMMERCIAL INDOOR SHOOTING RANGE / FORRESTON, ILLINOIS

Owner Keith Ruter (Doc) has gone from operating on teeth to operating a shooting range. Doc bought a defunct bar and retrofitted the location to fit his retail business and add a shooting range. The result of this is Smokin' Gun Worx. This two-story location hosts a retail space and simulation room upstairs along with a six lane bay. The tactical bay and an additional meeting space are

downstairs. A single ventilation system services both bays using a custom damper system that can cut flow off to one bay when not in use. Smokin' Gun Worx also boasts the AWD Pro™ target retrievers that allow shooters of all abilities to be challenged and improve their shooting. The upstairs range utilizes the Mancom™ Touch-N-Go retrievers for simple out and back target movement.

- 12 total shooting lanes
- 25 yard bays
- Total Containment Trap™
- AWD Pro™ target retrievers
- Mancom™ Touch-N-Go target retrievers
- AutoTargets™ with Hit Sync™
- Fixed position and tactical ceiling baffles
- PEPP sound abatement
- Range ventilation system



SOUTH TEXAS TACTICAL

COMMERCIAL INDOOR SHOOTING RANGE / BROWNSVILLE, TEXAS

South Texas Tactical began with Mel Rodero's vested interest in shooting sports. Mel previously owned another gun store, and then decided to upgrade to a gun store and shooting range. This 20 lane range hosts Action Target's signature Total Containment Trap, Defender Shooting Stalls, and

SRET Target Retrievers. South Texas Tactical also runs weekly competitions at the range, allowing for shooters of varying expertise to improve and enhance their skills. The spacious retail area and high quality range equipment are sure to attract shooters from around the area.

PROJECT SCOPE

- 20 total shooting lanes
- Total Containment Trap™
- Defender™ shooting stalls
- SRET target retrievers



TACTICAL SUPPLY – THE RANGE

COMMERCIAL INDOOR SHOOTING RANGE / YAKIMA, WASHINGTON

The Range is a 34,000 sq ft indoor shooting, firearms retail, manufacturing, and service facility located in Yakima, Washington. It is locally owned and focusses on providing a family friendly facility where customers can come to be educated, receive training, and exercise their right to bear

arms. Utilizing Action Target equipment, The Range is able to do just that. The Rubber Berm Trap, Defender Shooting Stalls™, safety ceiling baffles, PEPP sound abatement material, and range ventilation system provide a safe and comfortable shooting environment.

PROJECT SCOPE

- 15 total shooting lanes
- Rubber Berm Trap
- Fixed position ceiling baffles
- SRET target retrievers
- Defender™ shooting stalls
- PEPP sound abatement
- Range ventilation system



THUNDERBIRD FIREARMS ACADEMY

COMMERCIAL INDOOR SHOOTING RANGE / WICHITA, KANSAS

Action Target started working with Thunderbird Tactical, now Thunderbird Firearms Academy, in 2009. In 2015 the doors to the largest range in Kansas were opened and a new chapter started for owner Ryan Pennock. Action Target manufactured and installed range equipment on 28 indoor lanes. 24 lanes are open for public use and four are reserved for private instruction and members.

Action Target's digital non-turning SRET was selected for the convenience it offered customers giving them precise distance control with no guess work that comes with basic toggle retrievers. Ryan has developed the business around training, endeavoring to help Kansas be more proficient and safe with firearms.

- 28 total shooting lanes
- Rubber Berm Traps
- Keypad SRET target retrievers
- Mancom™ Touch Plus target retrievers
- Defender™ shooting stalls
- PEPP sound abatement



TNT GUNS AND RANGE

COMMERCIAL INDOOR SHOOTING RANGE / MURRAY, UTAH

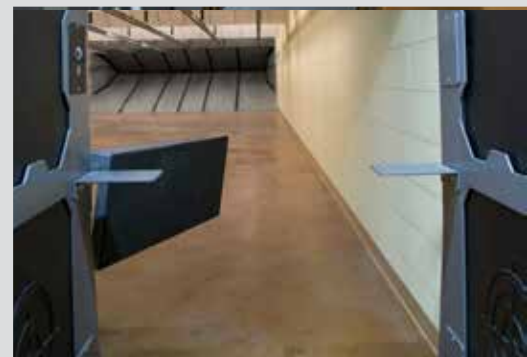
Tanner Nattress comes from a line of entrepreneurs, but he might be the most ambitious. When Tanner set out to build a shooting range he wanted to make sure he built the most unique and all-encompassing range possible. He started by installing 6 foot wide private shooting lanes (complete with sliding doors) in the 25 yard pistol range. He then installed 100 yard completely private rifle lanes, powered by the AWD Pro™ target retrievers.

Next, he added a 300° simulator room. Just when you would think he'd covered everything, Tanner also installed the first indoor shotgun clays range in North America. The final touches to this impressive facility include .357 Burgers restaurant, training rooms, and an impressive retail space. Tanner set out to create the most unique range possible, and it's safe to say he was successful.

PROJECT SCOPE

- 6 foot wide private shooting lanes
- 100 yard private shooting rooms
- Indoor shotgun clay range
- Virta 300 degree simulator
- Total Containment Traps™
- AWD Pro™ target retrievers
- SRET target retrievers
- Fixed position ceiling baffles
- Range ventilation system





TREASURE CHEST GUN SHOP

COMMERCIAL INDOOR SHOOTING RANGE / MCPHERSON, KANSAS

Father and son team Steve and Austin Sechler wanted to create a modern shooting range that would accommodate all demographics present in McPherson, Kansas, from the serious hunter to the new shooter. In October 2013 they approached Action Target for advice on how to design their indoor shooting range for both pistol and rifle use. After consulting on the design and needs with

Action Target, Austin chose a heavy duty Total Containment Trap built of all 3/8 inch AR500 steel allowing customers to shoot virtually any commercial handgun or rifle round on their range. For target retrievers, they chose the Mancom™ Touch-N-Go which offers a digital distance control pad and carriers with a white LED to provide even lighting on the target at any position.

PROJECT SCOPE

- Total Containment Trap™
- Dust collection unit
- Fixed position ceiling baffles
- Mancom™ Touch-N-Go target retrievers
- Defender™ shooting stalls with storage shelves and a pivot table



VOLUSIA TOP GUN

COMMERCIAL INDOOR SHOOTING RANGE / DAYTONA BEACH, FLORIDA

Located on the beaches of Daytona, Volusia Top Gun is the largest gun store and range in Volusia County, Florida. With Action Targets AWD Pro Retrievers on all 16 lanes, shooters are able to run preprogrammed training scenarios, create custom scenarios, and accurately position the target downrange. Each shooter is sure to get a personalized and effective training every time they visit the range. After finishing in the range head on

over to the in-house Double Barrel Grill which has a unique old whiskey distillery atmosphere, and grab a cold drink with a Top Gun Burger or a 12 oz ribeye steak. Make sure to leave the drinks to the end of your visit. For the safety of all, drivers licenses are scanned for those who order alcoholic beverages and they are unable to enter the range for the rest of the day.

PROJECT SCOPE

- 12 total shooting lanes
- Total Containment Trap™
- Screw Conveyor System
- Defender™ shooting stalls
- Mancom™ AWD target retrievers
- Fixed position ceiling baffles
- Range ventilation system
- PEPP sound abatement



WILSHIRE GUN

COMMERCIAL INDOOR SHOOTING RANGE / WILSHIRE, OKLAHOMA

Wilshire Gun sets the standard in high end shooting ranges. This large facility houses 24 total shooting lanes divided in to 25, 35, and 100 yard shooting distances. Each of these lanes come equipped with target retrievers appropriate for each of the distances. For example, the fast, accurate speed of the Mancom™ AWD wireless retrievers is ideal for the 100 yard bay. Each of the ranges is also equipped with the Total Containment Trap, Screw Conveyor System, and Dust collection unit

to ensure that lead is safely contained.

The Wilshire Gun experience extends beyond shooting. The range Café provides casual, yet sophisticated, dining with a menu that includes a variety of burgers, sandwiches, salads, and more. Shooters can also enjoy themselves in a VIP lounge, or even safely enjoy a drink thanks to Wilshire's innovative range alcohol policy.

PROJECT SCOPE

- 24 total shooting lanes
- 25, 35, and 100 yard bays
- Total Containment Trap™
- Screw Conveyor Systems
- Dust collection units
- SRET target retrievers
- Mancom™ AWD target retrievers
- Defender™ shooting stalls
- Range ventilation system





WESTON SHOOTERS CLUB

COMMERCIAL INDOOR SHOOTING RANGE / WESTON, MASSACHUSETTS

At the junction of routes 95 and 20 in Weston Massachusetts, lies New England's newest and finest private shooting club. With one of the highest median incomes in America, Weston's residents found themselves needing a gathering place that

caters to professionals with a passion for firearms and a taste for luxury. This "Guntry Club" offers its members a place to watch the game, play cards, have a snack, and shoot on an eight lane state-of-the-art 50 foot pistol range.

PROJECT SCOPE

- Rubber Berm Trap
- Fixed position ceiling baffles
- SRET target retrievers
- Defender™ shooting stalls



X-RING SECURITY AND FIREARMS

COMMERCIAL INDOOR SHOOTING RANGE / WAIPAHU, HAWAII

X-Ring Security and Firearms is the only indoor shooting range on the Hawaii Islands that allows a shooter to move and shoot, train indoors. X-Ring also provides an opportunity for shooters to enjoy themselves while they train. AutoTargets™ with Hit Sync™ reacts when hit in predetermined zones or after a specified amount of time. Its tablet based software also tracks shot speed and accuracy

making it easy for X-Ring to provide competitions and advanced firearm training. X-Ring is equipped with SRET target retrievers and Defender™ shooting stalls with tactical carts. They also recycle all the brass and lead consumed and produced on the range with Action Target's Metals Recycling and Range Supply Program.

PROJECT SCOPE

- 9 total shooting lanes
- Total Containment Trap™
- Fixed position and tactical ceiling baffles
- Combat wall baffles
- SRET turning target retrievers
- SRET toggle retrievers
- Defender™ shooting stalls



ABU DHABI MATCH TRAINING VILLAGE

MILITARY MATCH™ SHOOT HOUSE VILLAGE / ABU DHABI, UNITED ARAB EMIRATES

Located on the outskirts of Abu Dhabi, UAE, is an entire training village comprised of MATCH live fire shoot house buildings.

This training compound, rated for handgun, rifle, and shotgun use, consists of nine shoot house buildings in various shapes and sizes, including two and three level buildings with internal

stairwells and roof breach openings. A complete after-action review system is in place, monitoring all rooms with cameras and recording equipment. Added features include: exterior facades to replicate local conditions, infantry target systems on the perimeter of village, and interior target systems located throughout the buildings.

PROJECT SCOPE

- 9 multi-level buildings
- 2 and 3 story buildings
- Roof breach mounts/openings
- Full after action review system
- Rifle-rated buildings with exterior facades
- Tunnels and hiding areas





ALERRT

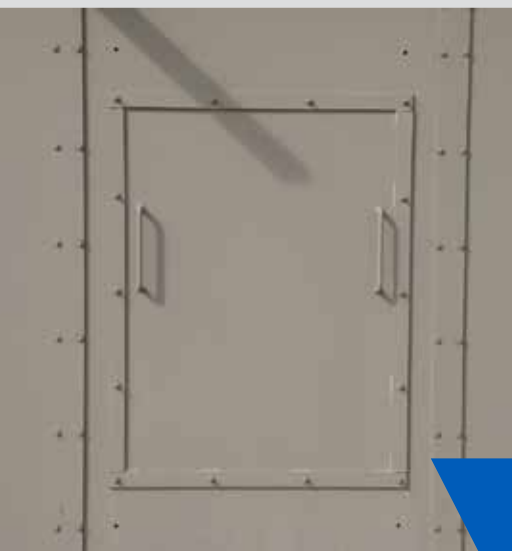
L.E. OUTDOOR SHOOTING RANGE AND MATCH™ SHOOT HOUSE / SAN MARCOS, TEXAS

The Advanced Law Enforcement Rapid Response Training (ALERRT) program has already reached more than 17,000 front-line law enforcement officers from nearly 600 agencies in 46 geographical regions of the United States. They have more than 80 adjunct instructors who travel to host agencies across Texas and the country to present the

ALERRT active shooter classes, along with 200+ certified trainers who are qualified to conduct the ALERRT training within their own agencies. With two large Action Target MATCH shoot houses and several outdoor ranges, ALERRT is very capable of training for almost any situation that a law enforcement officer might experience.

PROJECT SCOPE

- Two MATCH™ shoot houses
- Outdoor Rubber Berm Traps
- Power 90 turning targets
- TrackRunner moving target



ALLEGHENY COUNTY

L.E. OUTDOOR SHOOTING RANGE AND MATCH™ SHOOT HOUSE / PITTSBURGH, PENNSYLVANIA

Allegheny County serves as western Pennsylvania's premier law enforcement training facility, providing services to both the training academy and local agencies. Featuring a large traditional range with over 40 lanes of Action Target's Total Containment Trap and turning targets, reactive steel targets, and a live fire MATCH shoot house.

Serving as the training hub for western Pennsylvania the range facilities needed to be able to handle a high volume of training and withstand all seasons and types of weather. Now approaching a decade of service, the range equipment has proven itself up to those tasks.

PROJECT SCOPE

- More than 40 shooting lanes
- Total Containment Trap™
- Screw Conveyor System
- D-TaPS turning targets
- Line of Fire target system
- MATCH™ shoot house



ATLANTA POLICE DEPARTMENT

LAW ENFORCEMENT OUTDOOR SHOOTING RANGE / ATLANTA, GEORGIA

The Atlanta Police Department outdoor range has installed an advanced system to better train and prepare their officers. Target systems were installed on an east and west range, allowing training to be divided between state required qualification and more advanced tactical training. Both ranges have SmartRange 2000 with the ability to create and save several training

scenarios based on the instructors needs for training. The system also allows free movement by the instructors with the help of the Air Command Ultra hand held wireless control.

The Line of Fire tactical target system allows for moving, turning, swing up targets to make and replicate real life scenarios and combat courses.

PROJECT SCOPE

- 38 lane outdoor range
- 150 foot rifle-rated knee wall
- Line of Fire target system
- Deluxe 90 turning targets
- Turning, swing-up, and knock down targets
- 40 foot Dual TrackRunner
- Bobber Xtreme targets
- SmartRange master control



AUSTIN POLICE DEPARTMENT

LAW ENFORCEMENT SEMI-ENCLOSED SHOOTING RANGE / AUSTIN, TEXAS

Action Target has long been a supporter of the Austin Texas Police Department shooting range, and played a major role in their improvements where dilapidated outdoor ranges were removed, making way for a new and modern training facility.

Action Target provided the ballistic equipment for the new facility. The state-of-the-art ranges allow shooters to progress downrange from up to 50 yards without having to worry about a round leaving the range. High speed turning and running targets allow range masters to train officers in a realistic and safe manner.

PROJECT SCOPE

- Total Containment Trap™
- Dust collection unit
- Tactical ceiling baffles
- Power 90 turning targets
- TrackRunner moving target



CALGARY POLICE SERVICE

L.E. OUTDOOR SHOOTING RANGE AND MATCH™ SHOOT HOUSE / CALGARY, ALBERTA, CANADA

The Calgary Police Department of Alberta, Canada, needed an outdoor firearms training facility where their department and other departments in the surrounding area could practice tactical maneuvers and perform firearms qualification while still ensuring the complete containment of any bullet shot. To meet their needs, Action Target built two 100-meter ranges with full baffling and patented Total Containment Trap which completely and consistently contain any round sent

downrange without exposing the environment or trainees to hazardous lead dust. Action Target also constructed a 1,800 sq ft MATCH (Modular Armored Tactical Combat House) facility for close quarter combat training in a realistic environment that simulates domestic and office structures. The walls of the shoot house contain armor steel and are designed to stop and contain rounds fired within the structure.

PROJECT SCOPE

- Two 100-meter semi-enclosed outdoor ranges
- Tactical ceiling baffles
- 1,800 sq ft MATCH™ shoot house
- Overhead catwalk
- Portable bullet traps
- Breach windows, doors, and walls



CAMP BEAUREGARD

MILITARY MATCH™ SHOOT HOUSE / PINEVILLE, LOUISIANA

The Louisiana National Guard needed a live fire shoot house facility to train their soldiers for upcoming deployments overseas and looked to Action Target for the solution. Their MATCH shoot house provides critical training to soldiers by

using turning targets inside the shoot house, automated light and sound systems, and cameras with an after action review system that is displayed in the adjoining classroom facility, also provided by Action Target.

PROJECT SCOPE

- MATCH™ live fire shoot house
- Turning targets inside shoot house rooms
- Controllable light and sound systems
- In house cameras
- After action review system
- Classroom training facility
- Zero SDZ curtain



CAMP PENDLETON

MILITARY MATCH™ SHOOT HOUSE AND OUTDOOR RANGE / CAMP PENDLETON, CALIFORNIA

Camp Pendleton was in need of a new shoot house facility where their soldiers could effectively train for building clearing and breaching. Based on their training requirements they needed a facility with numerous customized elements making Action Target the best resource. This 8,000 square foot MATCH™ shoot house is replete with breach doors, sliding ballistic panels (which allow the house to be reconfigured quickly for different scenarios), and a full observation catwalk. The

entire interior is covered with custom white rubber panels to more closely replicate a real world indoor space.

An adjacent outdoor range completes the firearms training area. This 100 meter range is 210 feet wide and includes 60 turning targets systems, 10 pneumatic plate racks and laterally moving TrackRunner target systems.

PROJECT SCOPE

- 8,000 square foot MATCH™ shoot house
- White rubber fascia
- Multiple Tactical Breach Doors
- Ballistic sliding door and window panels
- Overhead catwalk
- Outdoor 210 foot wide 100 meter range
- TrackRunner running man systems
- 60 Power 90 turning target systems
- 10 Pneumatic Plate Racks



CHEEKTOWAGA POLICE DEPARTMENT

LAW ENFORCEMENT OUTDOOR SHOOTING RANGE / CHEEKTOWAGA, NEW YORK

With nearly 130 sworn officers, the Cheektowaga Police Department in the Buffalo area was in great need of modernizing their firing range training area. After a lengthy design, bidding, and award process, this highly functional bullet trap and target system was installed in a little more than three

weeks. The ultimate plan for this range will be to create a “no blue sky” range with baffles and a roof structure, and having this heavy duty Total Containment Trap and robust target system is the first step in the right direction.

PROJECT SCOPE

- 65 foot Total Containment Trap™
- Heated Fixed Turning Target Stands



CHESTER COUNTY EMERGENCY SERVICES

LAW ENFORCEMENT TRAINING FACILITY / COATESVILLE, PA

The premier law enforcement training facility in Pennsylvania is found at the Chester County Emergency Services training facility just outside of Philadelphia. This range has two bay with shooting distances of 50 yards and 100 yards. The 50- yard bay is a tactical range with 12 lanes

dedicated to tactical pistol and rifle training. The 100-yard bay is a 4-lane fixed bay dedicated to long range rifle training.

PROJECT SCOPE

- Total Containment Traps
- Tactical Baffles
- Fixed Baffles
- Fixed Lateral 360 targets
- Dual Running Man Pro
- AWD Pro Target Retrievers



FEDERAL LAW ENFORCEMENT TRAINING FACILITY

INDOOR AND OUTDOOR RANGES / BLACKSTONE, VA

This training facility for federal law enforcement officers has three total ranges. Two ranges are 25 meters long with 15 lanes each. The third range is a covered outdoor 100-meter range with 30

lanes and is 200 feet wide. The 100-meter range has 40' long tactical baffle plates that span the entire range with no columns in the middle of the range.

PROJECT SCOPE

- Rubber Berm Traps
- Tactical Baffles
- Fixed Lateral 360 targets
- AWD Pro target retrievers
- Dual Running Man Pro targets
- Defender Shooting Stalls



CPU TAIWAN

LAW ENFORCEMENT INDOOR SHOOTING RANGE / TAIPEI, TAIWAN

Central Police University is the highest police education institution in Taiwan. On Sept. 1, 1936, by merging Police Academy of Ministry of Interior, MOI and Chechiang Provincial Police School, the government established Central Police College for the purpose of unifying the police educational systems of the country. The college not only admits foreign students, but also cooperates with foreign universities, exchanges teachers and students, holds academic

seminars and takes part in international academic organizations and activities.

Action Target installed a shooting range in 2017 to provide a safe, training atmosphere where officers can be prepared for realistic scenarios. The Total Containment Trap™ combined with DTaPS turning targets and a DRM Pro™ running man target system allow officers to fire cross lane, at close proximity, and to move laterally in the range while shooting.

- 2 large tactical ranges
- Total Containment Trap™
- Dust collection unit
- DTaPS turning targets
- DRM Pro™ running man target system
- Tactical ceiling baffles



CUYAHOGA COMMUNITY COLLEGE

LAW ENFORCEMENT INDOOR SHOOTING RANGE / PARMA HEIGHTS, OHIO

Located just outside of Cleveland, Cuyahoga Community College is a central training facility for the law enforcement academy and many of the local law enforcement agencies. The range provides for all levels of training with Tactical Overhead Safety Baffles, allowing officers to move up and down range while maintaining complete ballistic protection. Mancom™ Touch Plus target retrievers make dynamic training possible by allowing

targets to be located accurately at any position in the range. When a more controlled training environment is needed in place of advanced training, the range also has Defender Shooting Stalls with pivoting tables and training barricades. With numerous options for training, the Cuyahoga Community College range is thoroughly prepared to serve the officers in the nearby cities and communities.

PROJECT SCOPE

- Total Containment Trap™
- Screw Conveyor System
- Dust collection unit
- Defender™ shooting stalls
- Mancom™ Touch Plus target retrievers
- Mancom™ Master Control system



DELAWARE DEPARTMENT OF CORRECTIONS

LAW ENFORCEMENT SEMI-ENCLOSED SHOOTING RANGE / DOVER, DELAWARE

Action Target was the basis of design for this cutting edge training facility. Along with Ventresca Bros, Inc of Delaware as the general contractor, Action Target was able to build this beautiful facility which is one of the nicest training facilities in the region. This range boasts the best of what Action Target has to offer including a 120

foot heavy duty Total Containment Trap, no blue sky safety baffles, a dual TrackRunner target system, inverted D-TaPS target turners, PEPP sound abatement, a PA system, a range master control room, and a wireless target control system that is run on a tablet. This facility is truly the "Jewel of Delaware."

PROJECT SCOPE

- 120 foot Total Containment Trap™
- Tactical ceiling baffles
- D-TaPS turning targets
- TrackRunner moving target
- SmartRange master control with Air Command
- PA system



DUGWAY PROVING GROUNDS

MILITARY OUTDOOR SHOOTING RANGE AND MATCH™ SHOOT HOUSE / DUGWAY, UTAH

Dugway Proving Grounds is a military base in Utah. Action Target worked with the on site Dugway Police Department to create a training facility ideal to their needs. The facility includes a MATCH™ shoot house complete with sliding ballistic panels, breach doors, a rubber fascia, and an overhead catwalk.

Along with the shoot house this facility houses a 130 foot wide Line of Fire™ complete with Universal 90 turning and swing up targets, Dual TrackRunner running man system, Steel KD targets, and Bobber Xtremes.

PROJECT SCOPE

- MATCH™ shoot house
- Tactical Breach Doors
- Sliding ballistic panels
- 130 foot Line of Fire™
- Universal 90 target system
- Dual TrackRunner moving target system
- Steel KD targets
- Bobber Xtreme targets



DURHAM REGIONAL POLICE SERVICE

LAW ENFORCEMENT INDOOR SHOOTING RANGE / WHITBY, ONTARIO, CANADA

When the Durham Regional Police Service needed a tactical shooting range to train its Law Enforcement officers, Action Target had the perfect products for their situation. Combining Fixed Lateral 360 targets, the Mancom™ Dual Running Man system, and the Freedom Master Control System gives officers an opportunity to train for

almost any scenario they may face. The rifle-rated Total Containment Trap and Dust collection unit allow officers to train from combat distance and even shoot across lanes safely and effectively. The PEPP sound abatement and safety baffles provide an added level of quality, making this range a great place for any officer to complete training.

PROJECT SCOPE

- Total Containment Trap™
- Dust collection unit
- Fixed Lateral 360 turning targets
- Mancom™ Dual Running Man moving targets
- Wireless Master Control system
- PEPP sound abatement



EGLIN AIR FORCE BASE

MILITARY INDOOR SHOOTING RANGE AND MATCH™ SHOOT HOUSE / EGLIN AFB, FLORIDA

Action Target's talented design teams were tasked to change what was originally a construction cut and weld concept project into a modularized bolt together project, which is the standard for Action Target's projects. Starting with a skeleton of a building to work with including I-beams, posts, and columns. The challenge was to design and piece the 1/2 inch AR 500 steel plates to the structure. Using 3-D design software, and Action Target's on-site fabrication and manufacturing

facilities, the design was completed on schedule and on budget, and the manufacturing was completed 100% by Action Target. The project was substantial in size and nature with tight construction schedules. The shoot house boasts moving wall partitions in each wing, armored door and window slider coverings, and 2'x2'x1/2" rubber tile interiors. This is a unique shoot house in style and function.

PROJECT SCOPE

- Total Containment Trap™
- D-TaPS turning targets
- Tactical ceiling baffles
- Wall baffles
- MATCH™ shoot house
- Several moving wall partitions
- Armored door and window slider coverings
- Rubber tile interiors



EGYPT SPECIAL FORCES

MILITARY MATCH™ SHOOT HOUSE VILLAGE / CAIRO, EGYPT

The Egypt Special Forces range is easily one of the most impressive facilities ever built by Action Target. The facility includes a one story, two story, and three story MATCH™ shoot house, a large TAC House™ simunitions training area, a simulator room, and a large after action and control room. The three story MATCH™ was custom engineered to handle the weight of armored steel for decades while providing a complete zero SDZ shooting

environment. Other custom features include rappelling mounts, a false ventilation system (for breach training), and range ventilation. All three MATCH™ structures utilize numerous sliding ballistic panels to make scenario changes quick and easy. The entire facility is connected with audio and visual recording devices to provide live monitoring and quality after action review sessions.

PROJECT SCOPE

- One story MATCH™ shoot house
- Two story MATCH™ shoot house
- Three story MATCH™ shoot house
- Tactical Breach Doors
- Custom rappelling mounts
- Custom false ventilation system
- Sliding ballistic panels
- Portable bullet traps
- TAC House™





EL PASO POLICE DEPARTMENT

LAW ENFORCEMENT OUTDOOR SHOOTING RANGE / EL PASO, TEXAS

El Paso Police Department is a dynamic and innovative entity currently comprised of more than 1,000 officers and 205 civilian employees who serve with pride and dedication. The department's focus on community relationships and on reducing crime has placed El Paso as "The Safest

Large City in the United States" as ranked by the Morgan Quitno Press in 2010. Through the use of high speed, 180 degree decision making targets, El Paso is able to train its officers for the difficult life and death decisions they will face throughout their careers.

PROJECT SCOPE

- D-TaPS turning targets
- Dual TrackRunner moving targets



FEDERAL FACILITY

LAW ENFORCEMENT MATCH™ SHOOT HOUSE / UNDISCLOSED LOCATION

This MATCH™ house features several room configurations with the capability to vary the training scenarios by closing and opening any number of the 30 interior doors. Above the training area Action Target designed a custom catwalk system and observation booths made of ballistic glass to

allow full view of training exercises taking place below from any angle. This facility also features a state-of-the-art Action Target security system, powered by Fedora Security, allowing video observation of each training area as well as easy playback for after action review sessions.

PROJECT SCOPE

- MATCH™ shoot house
- 30 interior doors
- 6 Tactical Breach Doors
- Catwalk and handrail systems
- Custom ballistic glass observation booths
- Sound abatement on surrounding building



FBI FORT DIX

LAW ENFORCEMENT MATCH™ SHOOT HOUSE / FORT DIX, NEW JERSEY

The FBI currently utilizes Action Target MATCH shoot houses at their Fort Dix site. When it came time to build a modular shoot house they called upon Action Target to install this MATCH shoot house with custom 10 foot high walls. The massive pole barn keeps this shoot house dry.

The impressive size of this shoot house is able to contain all of the following elements: 10 foot high walls, nine rooms, two hallways, 3/8 inch AR500 steel, a Tactical Breach Door, portable bullet traps, and a 50 foot x 60 foot pole barn.

PROJECT SCOPE

- Overhead catwalk
- Ship's ladder
- Tactical Breach Door
- Portable bullet traps
- 50 foot x 60 foot pole barn



FEDERAL AIR MARSHALS

L.E. INDOOR AND OUTDOOR SHOOTING RANGES / ATLANTIC CITY, NEW JERSEY

The Federal Air Marshals training facility provides their officers with top notch training on systems all provided by Action Target. They currently use three indoor 50 yard tactical ranges, complete with Total Containment Traps, 90 inverted turning targets, six dual Smart Track Runners, and outdoor ranges with the Bobber Xtreme

reactive steel targets installed to mirror the seating arrangement of a commercial jet. For more traditional outdoor training, Action Target also installed a 90 foot Total Containment Trap with a Screw Conveyor System, 18 inverted D-TaPS, and a Smart TrackRunner, all controlled by a wireless control system.

PROJECT SCOPE

- Three indoor ranges
- Two outdoor ranges
- Total Containment Trap™
- Screw Conveyor System
- D-TaPS turning targets
- SmartRunner moving targets
- Bobber Xtreme reactive targets
- Deluxe-KD reactive targets
- Wireless control system



FLETC CHELTENHAM

LAW ENFORCEMENT INDOOR SHOOTING RANGE / CHELTENHAM, MARYLAND

Action Target served as a subcontractor for the Federal Law Enforcement Training Center indoor ranges, designing, building, and installing the live fire range equipment components. Action Target also designed, manufactured, and installed a total of seven ranges for this project: four 25-meter ranges with 13 lanes each, two 50-meter ranges with 27 lanes each, and one 100-meter range with 11 lanes. Each range was equipped with turning

targets and moving targets, incorporating Action Target's unique steel Total Containment Trap as the bullet backstop and containment system. A Screw Conveyor System was included with the Total Containment Trap to collect and recover spent rounds. Steel safety baffles in a tactical configuration were installed for overhead bullet containment on each range.

PROJECT SCOPE

- 117 total shooting lanes
- 25, 50, and 100-meter ranges
- Total Containment Trap™
- Screw Conveyor System
- Tactical ceiling baffles
- Control room
- Steel static targets
- Inverted turning targets
- TrackRunner moving targets



FLETC GLYNCO

LAW ENFORCEMENT INDOOR SHOOTING RANGE / BRUNSWICK, GEORGIA

Action Target served as an SME and subcontractor for the Federal Law Enforcement Training Center in Brunswick, GA. Action Target built, designed and installed the bullet traps and targetry components. Action Target's world famous design and innovation were implemented on all four of the live fire ranges. The ranges were equipped

with turning and moving targets, and the Action Target steel Total Containment Trap as a bullet backstop and containment system. A conveyor system was included with the Total Containment Trap to collect and recover spent rounds. Action Target also designed and manufactured the steel safety baffles for this project.

PROJECT SCOPE

- Total Containment Trap™
- Screw Conveyor System
- Tactical ceiling baffles
- Turning targets
- Steel static targets



FORT WORTH POLICE DEPARTMENT

LAW ENFORCEMENT INDOOR SHOOTING RANGE / FORT WORTH, TEXAS

For decades the Fort Worth PD used an outdoor range just outside of the downtown area for their firearms training. After many decades of use and encroachment from new residential and commercial development the decision was made that new facilities were needed. In order to avoid running into the same encroachment issues down the road an indoor facility was determined to be the best choice. The city was able to find four buildings owned by the federal government that would allow

them to create a unified public safety training facility, housing the training departments of both the police and fire departments. Four total ranges were built: two 25 yard, one 50 yard, and one 100 yard. All ranges use Action Target's Total Containment Trap, Tactical Overhead Safety Baffles, various turning and moving targets systems, and provide the officers of the Fort Worth PD with a much needed range facility to safely carry out their firearms training.

PROJECT SCOPE

- Four total ranges (25, 50, and 100 yard distances)
- 80 total shooting lanes
- Total Containment Trap™
- Screw Conveyor Systems
- Tactical ceiling baffles
- Wall baffles
- Running man targets
- Mancom™ AWD target retrievers





FORT BENNING

MILITARY MATCH™ SHOOT HOUSE VILLAGE / FORT BENNING, GEORGIA

One of our most frequently requested live-fire shoot house designs is this seven house village at Fort Benning, GA. These multi-story shoot houses, like most of our designs, are free-standing and provide a realistic appearance. The floors and roof of the live fire building use the same design as the ballistic roof and floors that are used in the NTC LF shoot house. This creates a zero Surface Danger Zone (SDZ), both vertically and

horizontally, creating a safe training environment in every area of the shoot house.

Action Target manufactured and installed a seven building, live-fire MOUT village with an underground training tunnel and an AAR facility. All building designs in this village, including the multi-story portion, have been certified by registered professional engineers.

PROJECT SCOPE

- 7 total MATCH™ shoot houses
- Multi-level shoot houses
- Vehicle access
- Interconnecting tunnels
- Tactical roof entries
- Full camera after action review system

FOX VALLEY TECHNICAL COLLEGE

LAW ENFORCEMENT INDOOR AND OUTDOOR SHOOTING RANGES / APPLETON, WISCONSIN

Action Target was selected to provide all of the shooting range equipment needed to complete the Fox Valley Technical College's criminal justice training facility. Included in the facility are two 25 yard 10 lane indoor shooting ranges with fully tactical ceiling baffles allowing shooters to conduct training safely downrange. The remaining four ranges are outdoors including two tactical 50 yard bays with six lanes each and two fixed position bays—one at 100 yards and one at 300 yards. Each

of the ranges uses Action Target fixed position turning target systems controlled wirelessly by a master control screen.

Other aspects of the training facility include a cargo plane, body farm, scuba pond, driving course, skid pad, and a street scene with real homes, gas station, and hotel. All of these tools work together to provide a realistic training environment for students entering the criminal justice field.

PROJECT SCOPE

- 6 total shooting ranges
- Rubber Berm Traps
- Tactical ceiling baffles
- Wall baffles
- 44 Fixed Lateral 360 turning targets
- Master Control systems
- Mancom™ Dual Running Man moving targets



GARLAND POLICE DEPARTMENT

LAW ENFORCEMENT INDOOR SHOOTING RANGE / GARLAND, TEXAS

In January of 2011, Garland Police Department's new non-Action Target shooting range experienced a massive structural failure and collapse. Action Target was immediately contacted to assist in the design and construction of a new high-end shooting facility. The new Total Containment Trap and heavy duty overhead baffled range was built to the highest of standards to ensure the safety

and peace of mind of all those who have the opportunity to train there. The Total Containment Trap is equipped with a Screw Conveyor System for lead collection which accumulates all projectiles in a single 55-gallon drum. High speed turning targets and runner challenge all those who come to train.

PROJECT SCOPE

- Total Containment Trap™
- Dust collection unit
- Screw Conveyor System
- Tactical ceiling baffles
- Power 90 turning targets
- TrackRunner moving target



GATEWAY TECHNICAL COLLEGE

LAW ENFORCEMENT INDOOR SHOOTING RANGE / KENOSHA, WISCONSIN

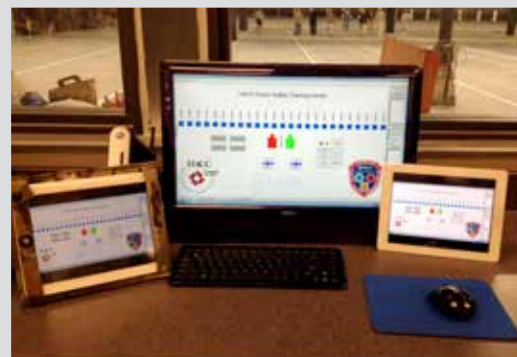
Action Target consulted with Gateway Technical College in Kenosha, Wisconsin for three years before their shooting range even went to bid. The work was worth it as this is a great example of a tactical training range. The indoor space is large enough to accommodate a 50 yard shooting distance as well as 12 firing lanes. The Total Containment Trap™ combined with a Dual Running Man allow trainee's to shoot cross lane and move laterally while shooting. The Fixed Lateral 360s

provide full 360° target turning, resulting in more dynamic and unpredictable decision making training. The overhead tactical baffles and combat wall baffles provide reliable ballistic coverage from any position in the range.

Gateway Tactical College also takes advantage of the Action Target Metals Recycling Program that turns used lead and brass into valuable range supplies and equipment.

PROJECT SCOPE

- 12 lane indoor range
- 50 yards shooting distance
- Total Containment Trap™
- Screw Conveyor System
- Tactical ceiling baffles
- 20' combat wall baffles
- Fixed Lateral 360 turning targets
- DRM Pro™ running man system
- Recirculating ventilation system



HARRISBURG AREA COMMUNITY COLLEGE

LAW ENFORCEMENT INDOOR SHOOTING RANGE / HARRISBURG, PENNSYLVANIA

In the heart of Pennsylvania, at one of the state's most attended community colleges, is one of the country's most state-of-the-art firing range facilities. The Harrisburg Area Community College enrolls over 23,000 students across their four campuses. The Senator Jeffrey E. Piccola Law

Enforcement Complex firing range is a combination 100 yard and 50 yard indoor training range. With six lanes at a 100 yard shooting distance, 19 lanes at a 50 yard distance, integrated with a fully tactical 25 yard environment, there isn't much you can't do in this range.

PROJECT SCOPE

- 136 foot Total Containment Trap™
- 50 and 100 yard ranges
- Dust collection unit
- Tactical ceiling baffles
- Wall baffles
- Ballistic rubber wall panels
- D-TaPS turning targets
- TrackRunner moving target
- SmartRange control system



HENNEPIN TECHNICAL COLLEGE

LAW ENFORCEMENT INDOOR SHOOTING RANGE / BROOKLYN PARK, MINNESOTA

Hennepin Technical College borrowed time on any local range available to conduct live-fire training for their students. The college jumped at the opportunity to partner with Metropolitan State University and create a state-of-the-art Law Enforcement Training Center and Criminal Justice Academy on the Hennepin Tech College's Brooklyn Park, MN campus. Two indoor ranges were designed to allow for very flexible training while incorporating low maintenance equipment

for the high volume of fire anticipated. The 67,000 sq ft training center incorporates two live-fire indoor ranges, a fire training "burn room" which can fit a ladder truck, scenario-based training, a forensic lab, and a number of "smart" classrooms. With its live fire ranges and other facilities, the Law Enforcement Center at Hennepin Technical College has become an outstanding regional training center.

PROJECT SCOPE

- Total Containment Trap™
- Dust collection unit
- Tactical ceiling baffles
- Wall baffles
- D-TaPS turning targets
- SRET target retrievers
- TrackRunner moving target



HILLSBOROUGH COUNTY SHERIFF

LAW ENFORCEMENT OUTDOOR SHOOTING RANGE / LITHIA, FLORIDA

The Hillsborough County Sheriff's Office is the fourth largest sheriff's office in the United States. They are the national leader when it comes to accreditation, and they have been named a flagship agency among law enforcement agencies. Their impressive training facility has six shooting ranges (five outdoor and one indoor) with a variety of target systems provided by Action Target.

Due to the heavy use of the outdoor ranges and the high amount of lead being deposited into the dirt berms, the Hillsborough County Sheriff's Office decided to start adding Action Target's Total Containment Traps. By directing bullets into an auger collection unit, this system not only helps eliminate the environmental impact of lead in the ground, but also creates an added source of revenue for the sheriff's office through the sale of the collected lead.

PROJECT SCOPE

- 6 total shooting ranges
- Total Containment Trap™
- Screw Conveyor Systems
- Power 90 turning targets
- Bobber Xtreme reactive targets
- TrackRunner moving target



HOUSTON POLICE DEPARTMENT

LAW ENFORCEMENT SEMI-ENCLOSED SHOOTING RANGE / HOUSTON, TEXAS

Action Target has been a long time supporter of the Houston Police Department shooting range and played a major role in their recent monumental improvements. In 2008, the green light was given to bulldoze the dilapidated outdoor ranges, and Action Target was awarded the contract to assist in the design and provide the ballistic equipment for the new facility. These new showcase ranges allow shooters to progress downrange from up

to 100 yards without ever having to worry about a round leaving the range. High speed turning and running targets allow range masters to train officers in a realistic and safe manner that had previously not been possible. A Screw Conveyor System collects lead and takes away the mess of lead clean-up, containing all projectiles in a single 55-gallon drum.

PROJECT SCOPE

- Total Containment Trap™
- Dust collection unit
- Screw Conveyor System
- Tactical ceiling baffles
- Power 90 turning targets
- TrackRunner moving target



INDIAN RIVER STATE COLLEGE

LAW ENFORCEMENT INDOOR SHOOTING RANGE / FORT PIERCE, FLORIDA

Indian River State College brought Action Target in to provide the live fire training facilities for their large public safety education and training facility located along the Atlantic coast of Florida. Their indoor range facilities feature Action Target's Total Containment Trap along with Tactical Safety Baffles, which allow for fully tactical and dynamic training within the facility.

Fixed turning targets at the mouth of the bullet trap are controlled in tandem with swing down targets located throughout the range. This offers the instructors a variety of training scenarios to present their students. From mandatory qualification to high level training including moving while shooting, team tactics, and more, the Action Target range equipment is a vital component of Indian River State College's program.

PROJECT SCOPE

- Total Containment Trap™
- Tactical ceiling baffles
- D-TaPS turning targets
- Universal 90 target system

INDIANA LAW ENFORCEMENT ACADEMY

LAW ENFORCEMENT INDOOR SHOOTING RANGE / PLAINFIELD, INDIANA

Indiana Law Enforcement Academy (ILEA) worked with Action Target to install their outdoor range in 1999 and has had a long lasting relationship ever since. So when ILEA determined it was time to renovate their existing indoor range facility in 2013, it was no surprise that they approached Action Target. With the functionality

and reliability of the Mancom™ Touch Plus target retrievers and newly installed combat walls, officers can now train with dynamic and realistic scenarios. This range now allows officers to approach complex situations with confidence and the tools necessary to make wise decisions.

PROJECT SCOPE

- Mancom™ Touch Plus target retrievers
- Master Control and Wireless Control
- Tactical ceiling baffles
- Combat wall baffles



KANSAS CITY POLICE DEPARTMENT

LAW ENFORCEMENT INDOOR SHOOTING RANGE / KANSAS CITY, MISSOURI

The Kansas City Police Department in Kansas City, Missouri, partnered with Action Target to build a 30-position tactical shooting range and 200 yard rifle range for patrol rifle and sniper training. This high-volume facility incorporated Action Target's steel Total Containment Trap on both ranges with the Screw Conveyor System allowing for easy and safe lead collection in a 55-gallon drum for convenient recycling. A complete armor steel tactical

baffle ceiling system provides bullet containment at any point downrange and 30 inverted turning targets and a dual TrackRunner moving target systems allow for both qualification and tactical training. The academy also installed Action Target's SmartRange master control system capable of broadcasting sound effects through the public address system to create a more realistic training environment.

PROJECT SCOPE

- Total Containment Trap™
- Screw Conveyor Systems
- 30 turning targets
- Dual TrackRunner moving targets
- SmartRange master control
- PA system
- Range ventilation system



KEESLER AIR FORCE BASE

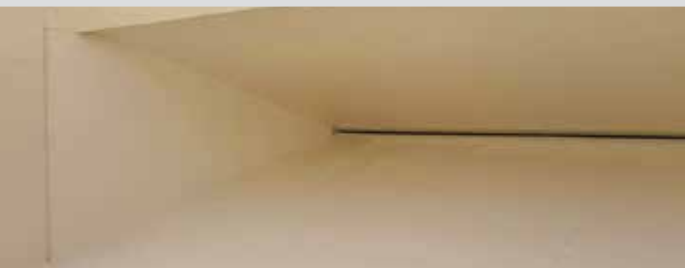
MILITARY INDOOR SHOOTING RANGE / BILOXI, MISSISSIPPI

Keesler Air Force Base in Biloxi, Mississippi, needed a place to conduct advanced firearms drills and qualification for its trainees and Air Force Security Forces. Action Target was chosen to equip the base's training facility with its patented Total Containment Trap, a steel funnel trap designed to direct all bullets shot downrange into a deceleration chamber where their energy is dissipated and the resulting lead debris can be

collected easily for disposal and recycling. Action Target also installed Mancom™ Touch Plus target retrievers which can provide custom training scenarios with turning capabilities for decision training and on-board situational lighting. The range also complies with ETL small arms range design and construction standards with overlapping tactical ceiling baffles for safe shooting at any point downrange.

PROJECT SCOPE

- Total Containment Trap™
- Tactical ceiling baffles
- Mancom™ Touch Plus target retrievers
- Shooting stalls



KIRTLAND AIR FORCE BASE

MILITARY OUTDOOR SHOOTING RANGE / KIRTLAND AFB, NEW MEXICO

Kirtland Air Force base was in need of a new outdoor bullet trap that could collect spent ammunition and keep it from contaminating the ground. Action Target provided the perfect solution with a Total Containment Trap™ with an overhead boom system. The boom system is engineered and stamped to withstand seismic, snow, and wind loads for the New Mexico area.

PROJECT SCOPE

- Total Containment Trap™
- Overhead boom system
- Galvanized protective roof



LETTERKENNY ARMY DEPOT

MILITARY OUTDOOR SHOOTING RANGE / CHAMBERSBURG, PENNSYLVANIA

Action Target installed a brand new outdoor Total Containment Trap™ with an overhead boom system at Letterkenny Army Depot in 2017. This system is engineered to comply with seismic, wind, and snow loads for Pennsylvania. The Vortex™ deceleration chamber collects spent rounds into a canister system for easy recycling. This also protects the surrounding environment from contamination.

PROJECT SCOPE

- 40 foot Total Containment Trap™
- Overhead boom system
- Galvanized protective roof



LOUISIANA WILDLIFE AND FISHERIES

LAW ENFORCEMENT OUTDOOR SHOOTING RANGE / BATON ROUGE, LOUISIANA

The mission of the Louisiana Wildlife and Fisheries Enforcement Division is, “to establish and maintain compliance through the execution and enforcement of laws, rules, and regulations of the state relative to the management, conservation, and protection of renewable natural wildlife and fisheries resources.” They are also involved in providing

public safety on the state’s waterways and lands allowing for the continued use and enjoyment by current and future generations. The new outdoor Total Containment Trap shooting range allows officers to train in safety, while effectively capturing lead rounds without contaminating the land they work so hard to preserve.

PROJECT SCOPE

- Total Containment Trap™
- Tandem-90 turning targets



MADISON POLICE DEPARTMENT

LAW ENFORCEMENT INDOOR SHOOTING RANGE / MADISON, WISCONSIN

Madison Police Department has 450 sworn officers required to qualify twice annually on handguns and once with rifles. Using local outdoor ranges proved to be challenging to schedule and costly in terms of officer time and travel. To solve the problem, Madison Police Department decided to look at planning their own indoor range and

training facility in 2009. They traveled the country touring various indoor ranges and researching what features and equipment they wanted for their own range. Action Target helped them find a suitable existing building for their new training center and walked them through the process of planning and installing an indoor range.

PROJECT SCOPE

- Total Containment Trap™
- Tactical ceiling baffles
- Wall baffles
- Fixed Lateral 360 turning targets
- Mancom™ Dual Running Man
- Wireless Master Control system
- Custom 3-D charging target



MANCHESTER POLICE DEPARTMENT

LAW ENFORCEMENT INDOOR SHOOTING RANGE / MANCHESTER, NEW HAMPSHIRE

The Manchester Police Department tactical shooting range is an ideal site for law enforcement training. Fixed Lateral 360 turning targets are able to simulate shoot/no shoot scenarios with their random edging technology. Combining these targets with the Mancom™ Dual Running Man system provides advanced training for real-world situations. The Wireless Master Control system also allows the training officer to control all of the

targets while freely roaming around the range. The 40 foot wide, rifle-rated Total Containment Trap allows officers to train at any distance and shoot across lanes without fear of ricochet, and the confidence that all bullet fragments will be safely collected. All of this along with PEPP sound abatement makes for a high-quality and safe training facility.

PROJECT SCOPE

- Total Containment Trap™
- Dust collection unit
- Fixed Lateral 360 turning targets
- Mancom™ Dual Running Man targets
- Wireless Master Control system
- PEPP sound abatement



MARICOPA COUNTY SHERIFF'S DEPARTMENT

L.E. MATCH™ SHOOT HOUSE AND OUTDOOR SHOOTING RANGE / PHOENIX, ARIZONA

In Phoenix, Arizona, the Maricopa County Sheriff's Department had Action Target build this multi-range facility with a MATCH ballistic shoot house, Total Containment Trap, inverted turning targets, and full safety baffles. It offers comprehensive live-fire shoot house, and outdoor range protection and supervision.

It also incorporates sixteen Power 90 turning targets, 24 Tandem 90 targets, four 160 foot TrackRunners, and our SmartRange control system with wireless remote. This certainly makes for a well-run, efficient outdoor range and MATCH ballistic shoot house.

PROJECT SCOPE

- Total Containment Trap™
- Tactical ceiling baffles
- Power 90 turning targets
- Tandem 90 turning targets
- TrackRunner moving targets
- SmartRange control system with wireless remote
- MATCH™ shoot house



METRO NASHVILLE POLICE DEPARTMENT

LAW ENFORCEMENT OUTDOOR SHOOTING RANGE / NASHVILLE, TENNESSEE

Action Target has long been associated with the Metro Nashville Police Academy's shooting range. For several years they planned a comprehensive upgrade incorporating turning targets, runner targets, and the refurbishment of nine existing reactive steel bobber targets. In 2010 when the decision was made to move forward and remove the old, dilapidated outdoor range equipment,

Action Target was awarded the contract to provide the targetry equipment for the new facility. High speed turning and moving targets now allow range masters to train officers in a realistic and safe manner. The upgrades have modernized this important outdoor range with the finest, safest equipment available today.

PROJECT SCOPE

- 60 Power 90 turning targets
- Two 100 foot TrackRunners
- 50 foot TrackRunner moving targets
- Bobber reactive steel targets



MICHIGAN STATE POLICE CRIME LAB

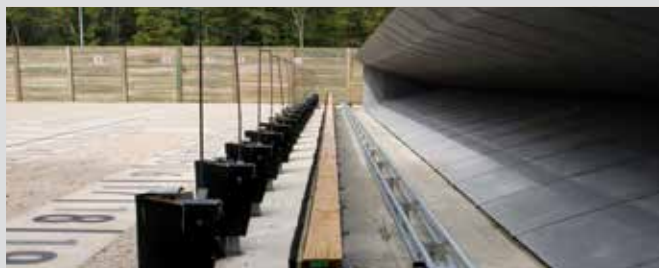
LAW ENFORCEMENT INDOOR SHOOTING RANGE / DETROIT, MICHIGAN

In 2014 Action Target won the contract for the Michigan State Police Crime Lab located at their Detroit branch. Its design allows for safe testing of all guns and calibers up to and including: .223, .308, .556, and .762. The sound abatement of this range, installed by Troy Acoustics, reduces

reverberation and transmission significantly, providing comfort for the shooter and neighboring spaces. Action Target's Rubber Berm Trap, ceiling and wall baffles, and the Mancom™ Touch-N-Go target retriever make for the most advanced crime lab in the state, and a great test facility.

PROJECT SCOPE

- Rubber Berm Trap
- Fixed position ceiling baffles
- Mancom™ Touch-N-Go target retriever



MONMOUTH COUNTY POLICE ACADEMY

LAW ENFORCEMENT OUTDOOR SHOOTING RANGE / FREEHOLD, NEW JERSEY

The outdoor shooting ranges used by the Monmouth County Police Academy set the standard for outdoor training ranges. By utilizing the Total Containment Trap and Dust collection unit this range is able to safely collect lead particles and dust, preserving the surrounding area and

keeping it free of lead contamination. Utilizing the fast 180 degree turning capabilities of the D-TaPS turning targets and the lateral movement of the Dual TrackRunners, officers are able to prepare for any real world scenario they may encounter.

PROJECT SCOPE

- 30 total shooting lanes
- Two 50 yard shooting ranges
- Total Containment Trap™
- Dust collection units
- D-TaPS turning targets
- Dual TrackRunner moving targets



MONTGOMERY COUNTY TACTICAL WEAPONS

LAW ENFORCEMENT INDOOR SHOOTING RANGE / CONSHOHOCKEN, PENNSYLVANIA

Action Target played an important part in designing this cutting edge indoor tactical training facility for the Montgomery County Tactical Weapons Training Facility at Conshohocken, PA, and served as the prime contractor for all ballistic and ventilation parts of this project.

This facility consists of a 15 lane, 50 yard range and a 6 lane, 100 yard range. Both ranges are used with handguns, shotguns, and rifles, and are protected with rifle rated safety baffles. Featured equipment includes: D-TaPS turning targets, a Total Containment Trap, dual TrackRunner moving target systems, and the SmartRange control software.

PROJECT SCOPE

- 21 total shooting lanes
- 50 and 100 yard bays
- Total Containment Trap™
- Tactical ceiling baffles
- D-TaPS turning targets
- TrackRunner moving targets
- SmartRange master control
- Range ventilation system

MONROE COUNTY SHERIFF'S OFFICE

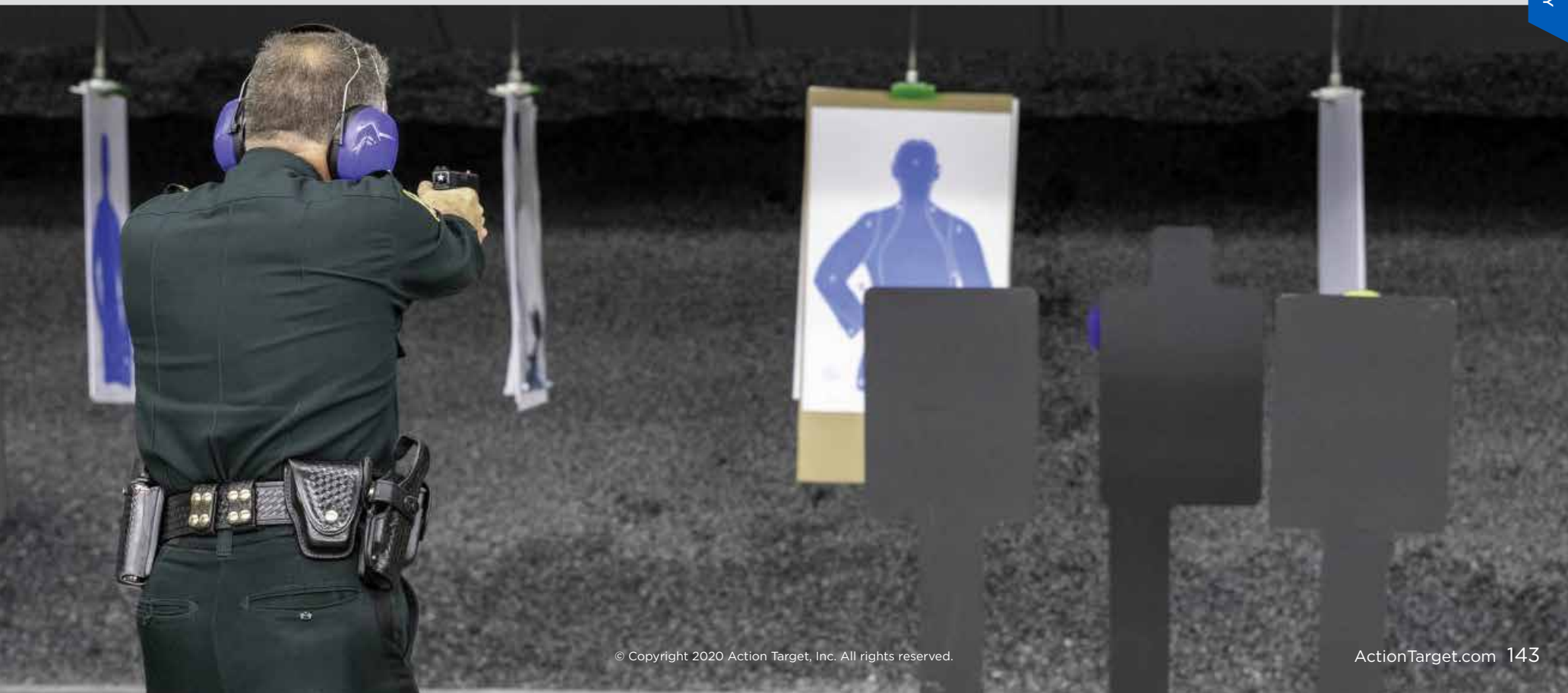
LAW ENFORCEMENT INDOOR SHOOTING RANGE / KEY WEST, FLORIDA

The Monroe County Sheriff's Office indoor shooting range offers range officers a variety of training opportunities. A high speed 180 degree turning target system allows trainers to prepare shoot / no shoot drills or traditional qualification courses. An additional level of threat recognition can be achieved with the dual lateral running targets.

Removable steel "Bobber" targets allow trainers to offer a new level of training with a variety of shapes and colors presented from behind steel shields. Trainers can program the system to fit their specific training desires.

PROJECT SCOPE

- T12 lane range
- Rubber Berm Trap
- Tactical Overhead Baffles
- High Speed Turning Target System
- DRM Pro Running Man Target System
- Dual Head Steel Bobber Target System





MOODY AIR FORCE BASE

MILITARY SEMI-ENCLOSED SHOOTING RANGE / MOODY AFB, GEORGIA

Moody Air Force Base near Valdosta, Georgia, needed a place to conduct advanced firearms drills and qualification for its trainees and Air Force Security Forces. Action Target was chosen to equip the base's training facility consisting of two shooting ranges (one at 50 yards and one at 100 yards) with its patented Total Containment Trap, a steel funnel bullet trap designed to direct bullets into a deceleration chamber where their

energy is dissipated and the resulting lead debris can be transported via an auger system to a 55-gallon drum for easy disposal and recycling. The semi-enclosed outdoor ranges comply with ETL small arms range design and construction standards with overlapping tactical ceiling baffles made of AR500 armor steel for safe shooting at any point downrange.

PROJECT SCOPE

- Two shooting ranges with distances of 50 and 100 yards
- Total Containment Trap™
- Screw Conveyor Systems
- Tactical ceiling baffles



M
MODULAR

A
ARMORED

T
TACTICAL

C
COMBAT

H
HOUSE

NACOGDOCHES POLICE DEPARTMENT

LAW ENFORCEMENT MATCH™ SHOOT HOUSE / NACOGDOCHES, TEXAS

When the Nacogdoches Police Department wanted a MATCH shoot house built they contacted Action Target to assist them during the planning phase. When the timing and budget were in place, Action Target designed, manufactured,

and installed this impressive structure in a relatively short amount of time. The track mounted portable bullet traps allow for different training scenarios to be setup and changed quickly, allowing for a more efficient use of training time.

PROJECT SCOPE

- 1,300 sq ft MATCH™ shoot house
- Tactical Breach Doors
- Overhead, track mounted, rolling portable bullet traps
- Pole-barn overhead cover



NAPERVILLE POLICE DEPARTMENT

LAW ENFORCEMENT INDOOR SHOOTING RANGE / NAPERVILLE, ILLINOIS

The Naperville Police Department had been using the same indoor range for decades and badly needed a full upgrade to bring their training to the next level. Action Target was contracted to renovate the range with a more robust bullet containment system, sound dampening materials, turning targets, and a Wireless Master Control system for more flexible training. The walls of the range were lined with 3/8 inch AR500 armor steel covered in a

rubber fascia and PEPP to dampen sound, tactical ceiling baffles were built for safe firearms training at any point downrange, and a Fixed Lateral 360 turning target system was installed for target acquisition and judgment drills. All systems within the range are controlled by the Wireless Master Control cart, providing the range master the ability to control training scenarios while downrange.

PROJECT SCOPE

- Rubber Berm Trap
- Tactical ceiling baffles
- Wall baffles
- Fixed Lateral 360 turning targets
- Wireless master control system



NE ALABAMA LAW ENFORCEMENT ACADEMY

L.E. OUTDOOR SHOOTING RANGE AND MATCH™ SHOOT HOUSE / PIEDMONT, ALABAMA

Cadets at the NE Alabama Law Enforcement Academy now receive top quality firearms training thanks to range improvements installed by Action Target. Basic firearms training, and even more advanced tactical and decision making training, are all accomplished on their traditional outdoor range with D-TaPS turning targets.

From the outdoor range they can also move into further advanced training inside the ballistic MATCH shoot house. The various room layouts, overhead observation catwalk, and sliding ballistic windows and doors allow for advanced room clearing training to be accomplished effectively, efficiently, and safely.

PROJECT SCOPE

- 30 Position outdoor range
- D-TaPS turning targets
- MATCH™ shoot house
- Observation catwalk
- Portable bullet traps
- Ballistic sliding doors and windows
- Quonset covering



OHIO STATE HIGHWAY PATROL

LAW ENFORCEMENT INDOOR SHOOTING RANGE / COLUMBUS, OHIO

Action Target first worked with Ohio State Highway Patrol in 1999 when we installed a Total Containment Trap. When it was determined that a range renovation was in order, Action Target was contacted for specifications regarding new equipment. Due to the quality, performance, and robust nature of the Total Containment Trap, it was the only piece of equipment not removed and replaced in the renovation. This 24 lane,

25 yard indoor range now provides officers a variety of training options, including timed training qualification courses and decision making drills. The Total Containment Trap™ and tactical safety baffle system allow for dynamic cross lane firing and shooting while moving drills. All of this is accomplished under the watchful eye of the RSO through clear ballistic glass stalls.

PROJECT SCOPE

- 24 total shooting lanes
- Total Containment Trap™
- Tactical ceiling baffles
- PEPP sound abatement
- Defender™ shooting stalls



OMAHA POLICE DEPARTMENT

LAW ENFORCEMENT INDOOR SHOOTING RANGE / OMAHA, NEBRASKA

Action Target designed, manufactured, and installed two live-fire ranges for the Omaha Police Department in Omaha, NE. Both are excellent indoor ranges that provide quality air control, efficient training operation, and outstanding shooting environments. Action Target installed Total Containment Trap with Dust collection units and AR500 steel overhead safety baffles on both ranges. The tactical 25 yard range incorporates 12 D-TaPS turning targets and a TrackRunner

moving target system with a SmartRange master control system. The fixed 50 yard rifle range incorporates eight Mancom™ Touch Plus target retrievers, eight Mancom™ Instructor Series shooting stalls, a Mancom™ Dual Running Man target system and a Mancom™ Touch Plus master control system. The 50 yard indoor range allows for more effective patrol rifle training in a controlled environment. Omaha now has a world class, flexible training facility.

PROJECT SCOPE

- Total Containment Trap™
- Dust collection unit
- Mancom™ Touch Plus target retrievers
- Mancom™ Dual Running Man
- Mancom™ Instructor Series shooting stalls
- D-TaPS turning targets
- Range ventilation system

ORLANDO POLICE DEPARTMENT

LAW ENFORCEMENT INDOOR SHOOTING RANGE / ORLANDO, FLORIDA

Very few ranges have the scope of Orlando Police Department: Total Containment Trap with Screw Conveyor Systems and Dust collection units, swing-down targets, tactical safety baffles, Bobber Xtreme reactive steel targets, inverted D-TaPS targets, inverted TrackRunners, Sonex sound panels, and SmartRange 2000. This 55 lane indoor shooting range is divided into three separate shooting bays. The first bay contains 15 lanes

and is designed exclusively for fixed rifle shooting with marked targets at 25, 50, 75, and 100 yards. The next bay contains 20 lanes at 50 yards and has an inverted TrackRunner and 20 D-TaPS decision making targets. The last bay also contains 20 lanes at 50 yards and is loaded with D-TaPS, an inverted TrackRunner, Universal 90 swing down targets, and 50 dual head Bobber Xtreme steel targets.

PROJECT SCOPE

- 55 total shooting lanes
- Total Containment Trap™
- Screw Conveyor System
- D-TaPS turning target system
- TrackRunner moving target
- Bobber Xtreme reactive targets
- Universal 90 target systems
- Tactical ceiling baffles
- SmartRange control software



PALM BEACH GARDENS POLICE DEPARTMENT

LAW ENFORCEMENT INDOOR SHOOTING RANGE / PALM BEACH GARDENS, FLORIDA

This unique range was designed to implement both steel and paper target systems for advanced police training. Shooting steel indoors has its own set of challenges and special care was taken to design the Palm Beach Gardens Police Department range to handle this effectively. First, custom portable Bobber Xtreme targets were designed to make removal of these systems easy. Second,

trenches were put into the floor to lower the targets where splatter is reduced and mechanics are protected. Finally, the tactical ceiling panels are positioned to properly contain bullet fragments.

Beyond the steel targets, this range also implements DTaPS turning targets, combat wall baffles, and the Total Containment Trap.™

PROJECT SCOPE

- 10 total firing lines
- Total Containment Trap™
- Screw Conveyor System
- Dust collection unit
- DTaPS turning targets
- Custom portable Bobber Xtreme reactive steel targets
- Tactical ceiling baffles
- Wall baffles



PALM BEACH COMMUNITY COLLEGE

LAW ENFORCEMENT INDOOR SHOOTING RANGE / PALM BEACH, FLORIDA

Palm Beach State College trains law enforcement cadets and numerous other officers, and is able to conduct all of their qualifications, plus rifle and shotgun training on their 24 lane indoor shooting range. The range is split into two bays with 12 lanes in each bay. Both bays are equipped with Action Target's SmartRange 2000 controls with Air Command Ultra allowing for them to program and

save different training scenarios. These scenarios and the decision making D-TaPS turning targets can be controlled on the range by the touch of a button. In addition, the Total Containment Trap with Screw Conveyor System and Dust collection unit, and tactical safety baffles, along with an air ventilation system, allow for a safe and clean range on which to train.

PROJECT SCOPE

- Total Containment Trap™
- Dust collection unit
- D-TaPS turning targets
- TrackRunner moving target
- Tactical ceiling baffles
- SmartRange 2000 master control
- Range ventilation system



PRINCE GEORGE'S COUNTY PD

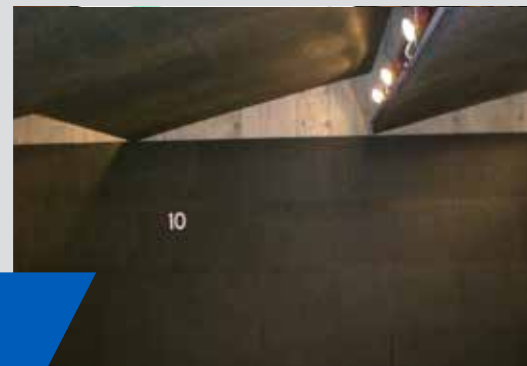
LAW ENFORCEMENT TRAINING FACILITY / UPPER MARLBORO, MD

This training facility in the D.C. area has six total ranges with distances ranging from 25 yards, 50 yards, and 200 yards. All but one range has tactical baffles, allowing for downrange training with full ballistic coverage overhead.

Acoustical fiber boards cover every wall and ceiling baffle. The facility also includes a TAC house village, which allows for non-live fire force on force training. A breach door also allows for tactical entry breaching.

PROJECT SCOPE

- Total Containment Traps
- Fixed & Tactical Baffles
- DTAPS turning targets
- AWD target retrievers
- Dual Running Man Pro targets
- TAC House"



PERRYSBURG POLICE DEPARTMENT

LAW ENFORCEMENT INDOOR SHOOTING RANGE / PERRYSBURG, OHIO

Action Target was awarded the contract to provide ballistic containment and targetry equipment for the new Perrysburg Police Department indoor tactical shooting range in Perrysburg, OH. Even on a fairly tight budget, this new showcase facility allows shooters to progress down range from up to 25 yards without having to worry about a round leaving the facility. High speed turning

targets allow range masters to train officers in a realistic and safe manner that had previously not been possible. Action Target's Rubber Berm Trap, 180 degree high-speed turning targets and tactical safety baffles are augmented with the additional comfort and safety of two-inch PEPP sound abatement material. Such safety and efficiency are completely unique to Action Target's design.

PROJECT SCOPE

- Rubber Berm Trap
- Tactical ceiling baffles
- D-TaPS turning targets
- PEPP sound abatement



PINELLAS COUNTY SHERIFF

LAW ENFORCEMENT SEMI-ENCLOSED SHOOTING RANGE / LARGO, FLORIDA

The Pinellas County Sheriff's Office is now training in their new state-of-the-art outdoor baffled firing range. This new range includes Action Target's impressive outdoor Total Containment Trap with a Screw Conveyor System to collect lead. Both innovative systems make recycling much easier by moving all fired bullets into a 55-gallon barrel. The range has a variety of tactical target systems, creating a multitude of training scenarios

and environments that increase the range's ability to do more than conduct basic qualification for their officers. Each target system is controlled by SmartRange—a computer software system that allows replication of real world scenarios. Training in these realistic scenarios replicates the type of stress officers need to learn how to handle in a way that is safe and successful.

PROJECT SCOPE

- 40 total shooting lanes
- Total Containment Trap™
- Tactical ceiling baffles
- Ballistic knee wall
- Line of Fire with turning targets
- Power 90 turning targets
- Bobber Xtreme reactive targets
- SmartRange 2000 control



PLANO POLICE DEPARTMENT

LAW ENFORCEMENT INDOOR SHOOTING RANGE / PLANO, TEXAS

The most exciting thing about the new Plano Police Department range is that it allows officers to train with both handguns and rifles in tactical scenarios. Heavy duty overhead safety baffles, side wall panels, and Total Containment Traps allow for training in confidence, because no errant

rounds will leave the training facility into the nearby community. High speed running and turning targets allow range masters to design realistic training scenarios to help prepare their officers for a variety of real life situations.

PROJECT SCOPE

- 2 tactical ranges
- Total Containment Trap™
- Tactical ceiling baffles
- Power 90 turning targets
- 100 yard Mancom™ target retrievers
- Dust collection unit

POLÍCIA CIVIL DO ESTADO DO RIO DE JANEIRO

L.E. ENCLOSED SHOOTING RANGE AND MATCH™ SHOOT HOUSE / RIO DE JANEIRO, BRAZIL

The State Civil Police of Rio de Janeiro, Brazil, contracted Action Target to build their range in a push to increase training standards for state and local law enforcement, and also support training for special operations units from other states around Brazil. It features an open air 11 lane

shooting range with user-friendly target retrieval systems from Mancom™ and a nine-room shoot house facility. To ensure bullet containment, the new range also includes Action Target's patented Total Containment Trap and ceiling baffles which provide ballistic protection for the shooting area.

PROJECT SCOPE

- 11 fixed shooting positions at 25 meters
- Total Containment Trap™
- Mancom™ Touch Plus target retrievers
- Tactical ceiling baffles
- 3,500 sq ft MATCH™ shoot house
- Overhead catwalk



PORTLAND POLICE DEPARTMENT

LAW ENFORCEMENT INDOOR SHOOTING RANGE / PORTLAND, OREGON

The Portland Police Bureau's Training Center opened in October of 2012 on a 9.6-acre property with 61,276 square feet of renovated building space allowing the police bureau to conduct the majority of its training in one location for the first time. The multi-million-dollar facility include a driving track, administrative offices, and defensive tactics and patrol tactics training areas. Two 12 lane 50 yard shooting bays were installed a year later by

Action Target to provide advanced tactical training in a realistic scenario. The equipment installed included a Total Containment Trap with a Screw Conveyor System for easy bullet containment and collection, tactical ceiling baffles for safe firearms training at any point downrange, PEPP lined walls for sound dampening, and an innovative turning target system for reactive judgment training.

PROJECT SCOPE

- 24 total shooting lanes
- 50 yard ranges
- Total Containment Trap™
- Screw Conveyor Systems
- Tactical ceiling baffles
- Fixed Lateral 360 turning targets
- PEPP sound abatement



ROCKLAND COUNTY SHERIFF

LAW ENFORCEMENT OUTDOOR SHOOTING RANGE / HAVERSTRAW, NEW YORK

Action Target designed, built, and installed live-fire range equipment components for the Rockland County Firearms and Tactical Training Facility Outdoor Range in Haverstraw, NY. Utilizing years of professional experience and technical know-how, Action Target worked closely with Rockland County's professionals to develop and plan this outdoor facility.

This remarkably versatile operation includes a reactive steel Bobber and Popper range, a 30-point turning target qualification range, a Line of Fire tactical training range, a multi-purpose training and staging range, and a rifle range. This targetry is controlled by Action Target's efficient and reliable SmartRange range control software.

PROJECT SCOPE

- Turning targets
- Line of Fire target system
- Bobber Xtreme reactive targets
- SmartRange range control



SAN MATEO COUNTY SHERIFF'S OFFICE

LAW ENFORCEMENT INDOOR SHOOTING RANGE / SAN MATEO, CALIFORNIA

The San Mateo Sheriff's Office indoor range was built on top of an old outdoor range from the 1940's to reduce sound and to showcase "green" range technology. All bullets fired into the range are fully recycled and the air being discharged from the range ventilation system is cleaner than the city's air going in. Fixed Lateral 360 turning targets combined with the DRM Pro™ provide dynamic and static training and qualification for

local officers and trainees. The wireless central range control allows firearms trainers complete control of the range equipment anywhere within the range.

The money for this range facility was donated by two local Silicon Valley businessmen to give back to Law Enforcement and help give them better training tools to keep them safe.

PROJECT SCOPE

- Total Containment Trap™
- Screw conveyor system
- Dust collection unit
- Tactical ceiling baffles
- Combat wall baffles
- Mancom™ Fixed Lateral 360
- DRM Pro™ running man system
- PEPP sound abatement
- Evaporative cooling range ventilation



SCHOOLCRAFT COMMUNITY COLLEGE

LAW ENFORCEMENT INDOOR SHOOTING RANGE / LIVONIA, MICHIGAN

Action Target played a major part in Schoolcraft Community College's cutting edge training complex. With their Hufcor FlexTact reconfigurable simunition house, driving pad, and burn tower, this two bay, 20 lane facility is just the latest addition to an already premier training facility in Michigan. Due to the capabilities of our high speed,

Mancom™ Touch Plus 360 degree turning target retrievers, Total Containment Trap, clear Lexan glass Defender Shooting Stalls, and other ballistic protection, Schoolcraft Community College has the flexibility of servicing the general public in one bay, and law enforcement in the 180 degree tactical bay.

PROJECT SCOPE

- Total Containment Trap™
- Tactical ceiling baffles
- Ballistic rubber wall panels
- Mancom™ Touch Plus target retrievers
- Fixed Lateral 360 turning targets
- Defender™ shooting stalls
- PEPP sound abatement



SCOTT AIR FORCE BASE

MILITARY INDOOR SHOOTING RANGE / SCOTT AFB, ILLINOIS

Scott Air Force Base's firing range was in need of upgrades. Action Target retrofitted this range with some of the latest in shooting range equipment. A new Total Containment Trap™, tactical ceiling baffles, Mancom™ Touch Plus target retrievers, and a Dual Running Man system provide

a venue that is both safe and dynamic. The sentry shooting stalls with custom bases, benches, and barricades allow for standing, sitting, and prone shooting positions all while providing the industry best ballistic protection.

PROJECT SCOPE

- Total Containment Trap™
- Tactical ceiling baffles
- Wall baffles and column protection
- Sentry™ shooting stalls
- Mancom™ Touch Plus target retrievers
- Master Control
- Mancom™ Dual Running Man

SHEPPARD AIR FORCE BASE

MILITARY INDOOR SHOOTING RANGE / SHEPPARD AFB, TEXAS

Action Target installed an outdoor Total Containment Trap™ at Sheppard Air Force Base in Texas. The Screw Conveyor System collects lead into a 55-gallon drum for easy recycling. The bullet trap also protects the surrounding environment from contamination.

PROJECT SCOPE

- 84 foot Total Containment Trap™
- Screw Conveyor System
- Dust collection unit



SOUTH LAKE POLICE DEPARTMENT

LAW ENFORCEMENT INDOOR SHOOTING RANGE / SOUTH LAKE, TEXAS

The South Lake Police Department is committed to protecting and serving the citizens of South Lake. Police officers work to keep citizens safe and provide educational and safety programs to the public. This new tactical firearms training facility equipped with cutting-edge equipment provides the highest quality training to South Lake officers. Safety is always a number one priority, and the overhead safety baffles and Screw

Conveyor System ensure all rounds will be properly contained and collected. This range helps South Lake PD fulfill its mission statement, which is, "to contribute to the growth and development of our community by effectively and efficiently providing the highest level of professionalism. We are dedicated to protecting lives and property while preserving the public peace with the highest ethical standards."

PROJECT SCOPE

- 25 and 50 yard bays
- Total Containment Trap™
- Screw Conveyor Systems
- Tactical ceiling baffles
- Mancom™ Touch Plus target retrievers
- Power 90 turning targets
- TrackRunner moving target



SOUTHWEST IOWA L.E. TRAINING CENTER

LAW ENFORCEMENT SEMI-ENCLOSED SHOOTING RANGE / COUNCIL BLUFFS, IOWA

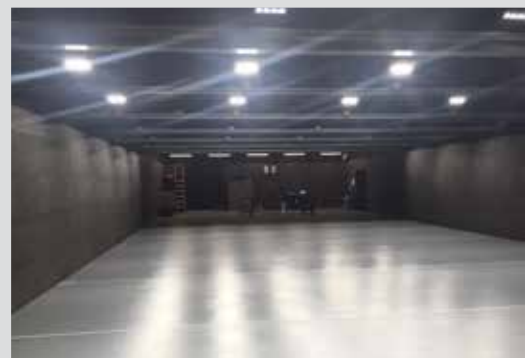
Action Target installed steel Total Containment Trap with Dust collection units on three ranges with steel tactical overhead ceiling baffles to safely allow shooting anywhere on the range. A total of 30 D-TaPS turning targets and three TrackRunner moving target systems were installed to allow both qualification and tactical training. A SmartRange master control system is able to broadcast sound effects through the

public address system to create more realistic training scenarios.

Having three separate ranges allows multiple agencies to use this versatile law enforcement training center at the same time, while decreasing operating costs and allowing the facility to be used by a variety of small groups.

PROJECT SCOPE

- Three total ranges
- Total Containment Trap™
- Tactical ceiling baffles
- D-TaPS turning targets
- SmartRange master control
- PA system
- Range ventilation system



SUNNYVALE POLICE DEPARTMENT

LAW ENFORCEMENT INDOOR SHOOTING RANGE / SUNNYVALE, CALIFORNIA

Inside a Fire Station in the heart of a brand new Google campus is the Sunnyvale Police Department shooting range. This practical range is equipped with everything needed for static and dynamic training. DTaPS turning targets combined

with a Dual TrackRunner, a Rubber Berm Trap with Class A fire retardant, tactical ceiling baffles, combat wall baffles, and PEPP sound abatement create a training atmosphere that is comfortable, safe, and functional.

PROJECT SCOPE

- Rubber Berm Trap
- Tactical ceiling baffles
- Combat wall baffles
- DTaPS turning targets
- Dual TrackRunner moving target system
- PEPP sound abatement



TARRANT COUNTY COLLEGE

LAW ENFORCEMENT INDOOR SHOOTING RANGE / FORT WORTH, TEXAS

In operation since 1980, the Tarrant County College Criminal Justice Training Center, located on the Northwest campus in Fort Worth, is committed to serving the training needs of the law enforcement community and the community at large. The training center was recently upgraded with a new 15 lane indoor tactical 50 yard range and a 5 lane indoor tactical 100 yard range. These

new rifle rated training ranges make the Tarrant County College Training Center one of the premier law enforcement training locations in the United States. Over 30 local agencies utilize the new ranges on a regular basis, and enjoy the ability to train in a tactical fashion in an indoor climate and lighting controlled environment.

PROJECT SCOPE

- 20 total shooting lanes
- 50 and 100 yard bays
- Total Containment Trap™
- Screw Conveyor Systems
- Tactical ceiling baffles
- Power 90 turning targets
- TrackRunner moving target



TEEX

LAW ENFORCEMENT OUTDOOR SHOOTING RANGE AND MATCH™ SHOOT HOUSE / BRYAN, TEXAS

Celebrating 70 years of serving law enforcement through training and technical assistance, the Law Enforcement Extension program incorporates the latest technology and instructional techniques for training law enforcement professionals across the State of Texas, the nation, and the world. TEEX is licensed as a training academy by the Texas Commission on Law Enforcement Officer Standards and Education (TCLEOSE).

Whether it's crash reconstruction, forensic crime scene investigation, or police weapons and tactics training, TEEX stands ready to train law enforcement and other first responders to meet the demands of their professions. With an Action Target MATCH shoot house and a heavy duty outdoor range, TEEX is capable of training for almost any situation that a law enforcement officer might experience.

PROJECT SCOPE

- MATCH™ shoot house
- Total Containment Trap™
- Power 90 turning targets
- Dual TrackRunner moving targets

TEXAS GAME WARDENS

LAW ENFORCEMENT OUTDOOR SHOOTING RANGE / HAMILTON, TEXAS

The Texas Game Warden Law Enforcement Division provides a comprehensive statewide law enforcement program to protect wildlife, natural resources, and the environment in Texas. The Law Enforcement Division employs around 500 wardens throughout the state and operates 27 field offices. Wardens go through a thorough firearms

training program in Hamilton, TX, one of the finest game warden training ranges in the United States. A 65 foot wide Action Target Total Containment Trap allows officers to safely train with handguns and rifles. The new bullet trap contains the lead rounds to help protect the land from lead contamination.

PROJECT SCOPE

- 65 foot Total Containment Trap™



TORONTO POLICE SERVICE

LAW ENFORCEMENT INDOOR SHOOTING RANGE / TORONTO, ONTARIO, CANADA

These two 30 lane, 50-meter, fully tactical indoor ranges at the Toronto Police Service indoor range in Toronto, Canada, were easily designed and installed because of the skill and expertise of Action Target. Range professionals provided a unique partnership, not only as subcontractors for

materials, but as lead installers as well. The Total Containment Trap™, dust collection unit, Screw Conveyor System, and full tactical safety baffles ensure that all rounds and lead dust are safely collected without the danger of splatter and ricochet.

PROJECT SCOPE

- 150 foot Total Containment Trap™
- Screw Conveyor System
- Dust collection unit
- Tactical ceiling baffles
- Wall baffles
- Fixed Lateral 360 turning targets

US SECRET SERVICE

LAW ENFORCEMENT INDOOR SHOOTING RANGE / US MID-ATLANTIC REGION

This US Secret Service shooting range is equipped to ensure agents are properly trained. The Total Containment Trap with a Screw Conveyor System ensures that all bullets are safely collected. The Mancom™ AWD target retrievers provide real world training scenarios with their 360 degree turning and various lighting capabilities. The Defender Shooting Stalls are installed on Hufcor FlexTact™ so that they can easily be moved on and off the range for tactical and qualification training.

PROJECT SCOPE

- Total Containment Trap™
- Screw Conveyor System
- Tactical ceiling baffles
- Mancom™ AWD target retrievers
- Defender™ shooting stalls installed on Hufcor FlexTact™
- PEPP sound abatement



UTAH COUNTY SHERIFF

LAW ENFORCEMENT OUTDOOR SHOOTING RANGE AND MATCH™ SHOOT HOUSE / THISTLE, UTAH

Looking at this Utah County Sheriff's Department Outdoor Range in Thistle, UT reveals exactly how efficiently and effectively Action Target professionals cater to each unique situation. This multi-range facility features a covered MATCH ballistic shoot house, Bobber reactive steel range,

a Deluxe 90 turning target range, a Line of Fire turning/moving target range, a TrackRunner moving target system, and Air Command wireless target controls. This facility also hosts Action Target's annual LETC event.

PROJECT SCOPE

- 10 shooting ranges
- Bobber reactive steel targets
- Deluxe 90 turning targets
- Line of Fire target system
- TrackRunner moving target
- MATCH™ shoot house
- Overhead catwalk
- Air Command wireless control



UTAH HIGHWAY PATROL

LAW ENFORCEMENT INDOOR SHOOTING RANGE / MURRAY, UTAH

You don't get much closer to action Target's original source of technology and professionalism than Murray, Utah. This huge 18 lane, 25 yard indoor range is using a Total Containment Trap with a Screw Conveyor System and a Dust collection unit, inverted D-TaPS 180 degree turning targets, dual-inverted TrackRunner moving target system, full tactical safety baffles, SmartRange control

software, and an advanced ventilation system at the Utah Highway Patrol's indoor range. We are particularly pleased with and proud of this remarkable project with its large indoor MATCH ballistic shoot house and our integrated ventilation system providing an environmentally safe and protected facility for all participants.

PROJECT SCOPE

- Total Containment Trap™
- Dust collection unit
- Tactical ceiling baffles
- Indoor MATCH™ shoot house
- Range ventilation system
- Sound absorption panels



VANCOUVER TACTICAL TRAINING CENTRE

LAW ENFORCEMENT INDOOR SHOOTING RANGE / VANCOUVER, BRITISH COLUMBIA, CANADA

The Vancouver Tactical Training Centre is one of the premier law enforcement ranges of the northwest. The facility contains a 50-meter and 25-meter shooting range with Rubber Berm Traps fully equipped for tactical firing. This means that officers can move forward, backward, and laterally, and fire across lanes, all while avoiding injury from bullet splatter or lead dust exposure. The Mancom™ Touch Plus target retrievers provide

excellent judgment training including shoot/no shoot, low light, police strobe, and charging scenarios. Furthermore, this centre houses two classrooms, weapons cleaning areas, simulator training areas, and weapons and ammunition storage area. All this ensures that officers are prepared for whatever they may encounter while serving their community.

PROJECT SCOPE

- Rubber Berm Trap
- Tactical ceiling baffles
- Wall baffles
- Mancom™ Touch Plus target retrievers



VIRGINIA MILITARY INSTITUTE

MILITARY INDOOR SHOOTING RANGE / LEXINGTON, VIRGINIA

When Virginia Military Institute wanted a state-of-the-art training facility for their cadets they chose Action Target to install their indoor ranges. Their new showcase ranges allow shooters to progress tactically downrange without ever having to worry about a round leaving the range. High-speed turning targets with wireless controls allow range

masters to train officers in a realistic and safe manner, not previously possible. These two particular tactical rifle ranges include Rubber Berm Traps, 30 inverted Deluxe 90s, 3/8 inch AR500 tactical ceiling baffles, 1/4 inch AR500 wall armor, and PEPP sound abatement for efficiency, protection, and ease of operation.

PROJECT SCOPE

- Rubber Berm Trap
- Deluxe 90 turning targets
- Tactical ceiling baffles
- PEPP sound abatement



VIRGINIA STATE POLICE

LAW ENFORCEMENT SEMI-ENCLOSED SHOOTING RANGE / BLACKSTONE, VIRGINIA

This impressive Law Enforcement shooting range is home to four baffled outdoor ranges where Virginia State Police officers can receive real world firearms training. Utilizing Action Target's D-TaPS turning targets, officers are able to make appropriate use of force decisions. The D-TaPS turns 180 degrees in two-tenths of a second to display shoot and no-shoot targets. These ranges

also utilize SmartRunner moving targets that replicate a laterally moving target. Combined with the D-TaPS targets, officers are able to learn how to safely disable a target without collateral damage. All of these targets are controlled by SmartRange with tablet integration, providing firearms trainers the ability to control the entire range and create training and qualification scenarios.

PROJECT SCOPE

- 64 total shooting lanes
- 4 shooting ranges
- D-TaPS turning targets
- SmartRunner moving targets
- SmartRange master control with tablet integration



WASHINGTON DC METRO POLICE

LAW ENFORCEMENT INDOOR SHOOTING RANGE / WASHINGTON, DC

The DC Metro police called upon Action Target to retrofit their dilapidated range into a high quality training academy. Since recruits met in the gym directly above the range, sound and safety was paramount, and Action Target ensured these needs were exceeded. The most unique feature is the screw auger which is located below ground.

The lead travels from the main auger to the take-away auger on hinged buckets. These buckets flip over into a 55-gallon barrel once they reach ground level. This unique system is just one example of Action Target finding a solution to a client's specific need.

PROJECT SCOPE

- Total Containment Trap™
- Screw Conveyor System
- Tactical ceiling baffles
- Power 90 turning targets
- Pepper Popper steel targets
- Dual TrackRunner moving targets
- PEPP sound abatement



WASHINGTON METRO AREA TRANSIT AUTHORITY

LAW ENFORCEMENT INDOOR SHOOTING RANGE / WASHINGTON, DC

The Washington Metropolitan Area Transit Authority range is an ideal training facility. It contains two 50 yard shooting ranges complete with Total Containment Traps so that officers can train from any distance and any angle. Inverted D-TaPS turning targets provide ideal judgment training and full tactical ceiling baffles safely capture

errant rounds without the danger of bullet splatter. Each of the ranges is equipped with a sliding ballistic door large enough to bring vehicles onto the range for more advanced training. The entire range is operated from a control room with SmartRange master control software and a PA system.

PROJECT SCOPE

- Two 50 yard ranges
- Total Containment Trap™
- Dust collection unit
- Tactical ceiling baffles
- D-TaPS turning targets
- PEPP sound abatement
- Range ventilation system
- SmartRange master control



WAUKESHA COUNTY TECHNICAL COLLEGE

LAW ENFORCEMENT INDOOR SHOOTING RANGE / PEWAUKEE, WISCONSIN

Action Target was first contacted in 2008 to help design a future indoor range to serve Waukesha County Technical College. Dean Brian Dorow worked closely with Action Target to ensure the facility had cutting-edge technology and equipment that would last. Action Target designed the range to be “hybrid tactical” for tactical and fixed firing line use. This configuration is able to serve both the police academy students and civilians who use the range.

This range houses 12 shooting lanes with a Total Containment Trap and solid modular Defender Shooting Stalls for safe firing from a fixed position. Each lane is equipped with a Mancom™ Touch Plus target retriever. The Freedom Series Wireless Master Control system can run scenarios on all 12 retrievers simultaneously. A Mancom™ Dual Running Man target system moves targets laterally in front of the trap for more advanced tactical training.

PROJECT SCOPE

- Total Containment Trap™
- Dust collection unit
- Mancom™ Touch Plus target retrievers
- Wireless master control system
- Mancom™ Dual Running Man moving targets
- Defender™ shooting stalls



WEBER COUNTY SHERIFF'S DEPARTMENT

LAW ENFORCEMENT OUTDOOR SHOOTING RANGE AND MATCH™ SHOOT HOUSE / OGDEN, UTAH

Easily one of the most impressive law enforcement tactical training facilities in the country, Swanson Tactical Training boasts two 20 lane, 50 yard semi-enclosed outdoor ranges, one eight lane, 300 yard semi-enclosed range and a large live fire MATCH shoot house. Each of these ranges contain turning target systems, overhead safety baffles, Total Containment Trap systems and dual inverted TrackRunners. The no blue sky nature of

the safety baffles and the Total Containment Trap ensure that no round escapes the firing ranges and all are safely collected. The combination of all of these spectacular ranges with Action Target's innovative MATCH shoot house provides local law enforcement an ideal setting for safely and effectively training its officers for every possible real life scenario.

PROJECT SCOPE

- 48 total shooting lanes
- 50 and 300 yard ranges
- Total Containment Trap™
- Tactical ceiling baffles
- Wall baffles
- Power 90 turning targets
- TrackRunner moving targets
- MATCH™ shoot house



WESTMINSTER POLICE DEPARTMENT

LAW ENFORCEMENT INDOOR SHOOTING RANGE / WESTMINSTER, CALIFORNIA

This beautiful shooting range located in Westminster, California is built for training the modern Law Enforcement officer. Full tactical baffles and a Total Containment Trap™ allow for shooting from anywhere within the range including 180° ballistic protection. The facility is large enough to bring in vehicles for real world training scenarios. All the target systems are controlled by a central range control system.

PROJECT SCOPE

- 10 lane range
- Total Containment Trap™
- Tactical ceiling baffles
- Combat wall baffles
- DTaPS turning targets
- Runner 120 moving target
- PEPP sound abatement

WINSTON-SALEM TRAINING ACADEMY

LAW ENFORCEMENT INDOOR SHOOTING RANGE / WINSTON-SALEM, NORTH CAROLINA

When the Winston-Salem Police Department approached Action Target about building a firearms training facility, they had little more than some hand-drawn sketches, a couple notes, and passion. Over the course of four years, Action Target worked with the police department to design and build one of the longest indoor ranges in their geographic region with one bay of 50 yard lanes and another bay of 100 yard lanes. Both shooting

bays are equipped with Action Target's patented Total Containment Trap, a steel funnel bullet trap that utilizes an innovative auger system to safely pump hazardous lead debris into a 55-gallon drum for easy disposal, dual TrackRunner moving targets for advanced drills, and 180 degree turning target systems for target acquisition and use of force judgment training.

PROJECT SCOPE

- 50 and 100 yard shooting ranges
- Total Containment Trap™
- Screw Conveyor Systems
- Tactical ceiling baffles
- D-TaPS turning targets
- Dual TrackRunner moving targets
- PEPP sound abatement
- SmartRange master control

YORK REGIONAL POLICE TRAINING FACILITY

LAW ENFORCEMENT INDOOR SHOOTING RANGE / EAST GWILLIMBURY, ONTARIO, CANADA

This large indoor shooting range is perfect for keeping officers trained and ready for what they could encounter in real life scenarios. The tactical ceiling and wall baffles combined with the Total Containment Trap™ allow for a 180 degree shooting zone. The advanced target systems combined with Action Target's wireless cart range control allows trainers to create nearly any training situation imaginable.

PROJECT SCOPE

- 18 total lanes
- 50 yard tactical range
- Total Containment Trap™
- Screw Conveyor System
- Fixed Lateral 360 turning targets
- DRM Pro™ moving target
- Tactical ceiling baffles
- Combat wall baffles
- PEPP sound abatement

COMPLETED RANGES

Action Target has built thousands of ranges in more than 50 countries around the world. These are just some of them.

9-11 Memorial
911 Rapid Response
Abu Dhabi MATCH Village
Accuracy Firearms
Accuracy Unlimited
Adams County Sheriff
Advanced Ranges
Adventure Outdoors
AJ Harris Tactical
Ak-Chin Justice Center
Alameda Police Dept.
Alamo Colleges
Albuquerque Police Dept.
ALERRT
Alexandria Indoor Range
Alexandria Police Dept.
Allan Hancock College
Allegheny County Sheriff
Allentown Police Dept.
Alpha Range
American Arms
American Firearms School
American Heritage Gun Range
American Shooters
American Shooters Supply
Andalusia Police Dept.
Andrews AFB
Ankeny Police Dept.
Ann Arbor Arms
Anne Arundel County Police Dept.
Anniston Army Depot
Appleton Police Dept.
Arapahoe County Sheriff
Arena Gun Club
Arizona Dept. of Corrections
Arkansas Armory Inc
Arlington Police Dept.
Ascension Parish Sheriff
Athena Gun Club
Atlanta Police Pistol Range
Auburn Police Division
Augusta County Sheriff
Aurora Police Dept.
Austin Police Dept.
Aviano NATO
Badlands Pawn & Range
Bainbridge Police Dept.
Baldwin County Sheriff
Baltimore County Police Dept.
Bangor Submarine Base
Barracks 616
Bartlesville Police Dept.
Bartow County Sheriff
Basics Gun Range
Baton Rouge Police Dept.
BDC Gun Room
Beaver County Sheriff
Beckley Police Dept.
Bedford Park Police Dept.
Bellaire Police Dept.
Bend Police Dept.
Bensenville Police Dept.
Bernalillo County Sheriff
Bethany Police Dept.
Beverly Hills Police Dept.
Bexar County Sheriff Office
Big Boy's Guns, Ammo & Range
Big Iron Range
BigShots Indoor Range

Bill Jackson Shop for Adventure
Birmingham Police Dept.
Bismarck Police Dept.
Bixby City Police
Blackhawk Training Facility
Blackstone Shooting Sports
Bloomington Police Dept.
Blount County Sheriff
BluCore Shooting Center
Blue Ridge Arsenal
Blueline Tactical
BNP Nuclear
Boise Police Dept.
Boone County Sheriff
Border Patrol, Warroad, MN
Border Tactical Indoor Range
Boulder Police Dept.
Bow and Barrel Sportsman Center
Braselton Police Dept.
Brenham Police Dept.
Brick Armory
Broken Arrow Police Dept.
Broomfield Police Dept.
Broward County Comm. College
Brownsville Police Dept.
Brunswick County Sheriff
Brunswick County Sheriff
Buena Park Police Dept.
Buffalo Grove Police Dept.
Bullet Ranch
Bullock County Sheriff
Bulseye Shooting Range
BullZeye Shooting Sports, LLC.
Burro Canyon Shooting Park
Butler Range Complex
C-CBP Harper Ferry
Cabot Gun And Ammo
Caddo Parish Sheriff
Calcasieu Parish Sheriff
Calgary Police Service
Calgary Shooting Centre
Calibers Shooters Sports Center
Camp Beauregard
Camp Butler
Camp Lejune
Camp Parks
Camp Pendleton
Camp Perry
Camp Stanley
Campbell County Sheriff
Canton Police Dept.
Cape Gun Works
Carbon County Sheriff
Carloita Central Arizona L.E. Acad.
Carmel Police Dept.
Carolina Sporting Arms
Carrollton Police Dept.
Caswells Shooting Range
Cedar Rapids Police Dept.
Centennial Gun Club
Centershot Gun Range
Central Kentucky Gun & Range
Charlotte-Mecklenburg Police Dept.
Chatham County Sheriff
Chattanooga Police Dept.
Cheektowaga Police Dept.
Chenega Global Services
Cherokee County Sheriff
Cheyenne Police Dept.

Chickasha Police Dept.
Chula Vista Police Dept.
Cincinnati Police Dept.
Citrus County Sheriff
Clackamas County Public Safety
Clackamas County Sheriff
Clackamas County Sheriff North
Clarke County Police Dept.
Clarksville Police Dept.
Clayton County Firearms Training
Clearwater Police Dept.
Cleveland Police Dept.
Close Quarters Tactical
Closter Boro Police Dept.
Coast Guard Training Center
Cobb County Police Academy
Coles County Sheriff
Collier County Sheriff
Colonial Shooting Academy
Colorado Clays LLC
Colorado Correctional Center
Colorado Springs Police Dept.
Columbia County Sheriffs Office
Columbus Police Dept.
Comstock Boarder Patrol Station
Concord Police Investigation
Concordia Parish Sheriff
Conroe Police Dept.
Conservation Dept.
Cook County Sheriff
Cookeville Police Dept.
Cooper Firearms of Montana Inc.
Corona Police Dept.
Corpus Christi Police Dept.
Council Bluffs Police Dept.
Coyote Creek
CPU Taiwan
Crystal River Nuclear Power Plant
Culpeper Police Dept.
Cuyahoga Community College
Cypress Police Dept.
Dallas County Sheriff
Daly City Police Dept.
Davenport Police Dept.
Davie Police Dept.
Dayton Police Dept.
DEA New York
Dead Center Gun Range
Decatur Police Dept.
Defense in Depth
DeKalb County Police
Delard Police Dept.
Delaware Dept. of Corrections
Delray Beach Police Dept.
Denton County Sheriffs Office
Denton Police Dept.
Denver Police Dept.
Dept. of Energy, Nevada
Dept. of Wildlife & Fisheries
Desert Hills Shooting Club
DeSoto County Sheriff
DFW Gun Range
DS Arms Inc.
Dugway Proving Grounds
Duke Energy
Dumont Police Dept.
DuPage County Sheriff
Eagle County Sheriff
Eagle Eye Shooting Sports

Eagle Gun Range
Eagle Gun Range II
Eagle Sports Range
East Baton Rouge Sheriff
East Brunswick Police Dept.
East Greenwich Police Dept.
Eastern Correctional Institute
Eastern Nebraska Arms
Ecole Nationale de Quebec
Edmonton Police Service
Edwards AFB, CA
Eglin AFB, FL
Egypt Special Forces
El Paso Community College
El Paso County Sheriff
El Paso Police Dept.
Eldorado Shooting Range
Elite Shooting Sports
Elk Grove Village Police Dept.
Englewood Cliffs Fire Dept.
EOD San Diego
Fairfax City Police Dept.
Farmington Police Dept.
Fayetteville CLSD
FBI Cedar Rapids
FBI Chicago
FBI Fort Dix
FBI Leavenworth
FBI Sacramento
FBI St. Louis
FBI Topeka
FBI Washington Field Office
FCI McDowell
FCI Mendota
Federal Air Marshals
Federal Protective Services
Federal Reserve Bank of Chicago
Federal Reserve Bank of New York
Federal Reserve Bank of St Louis
Federal Way Discount Guns
FEMA Mt. Weather
Field Time Target & Training
Firearms Support & Storage LLC
Fireline II
Firing Line Training
Fishkill Correctional
Fitzgerald Police Dept.
FLETC, Artesia
FLETC, Brunswick
FLETC, Cheltenham
Florence Police Dept.
Florida Gateway College
Forsyth County Sheriff
Fort Benning
Fort Bliss
Fort Campbell
Fort Collins Police Dept.
Fort Hood
Fort Lauderdale Sheriff
Fort Smith
Fort Worth Police Dept.
Fox Shooting Loft
Fox Valley Technical College
FPL Turkey Point
Franklin Police Dept.
Freestate Gun Range
Frisco Gun Club
Frisco Police Dept.
Front Range Gun Club

Full Armor Firearms
Fulton County Police Dept.
G4S Cash Solutions
Gallup Police Dept.
Garden City Community College
Garfield Police Dept.
Garland Police Dept.
GAT Guns, Inc
Gateway Technical College
Georgia Gun Club
Georgia Power Co
Georgia Southern University
Get Some Guns & Ammo Murray
Get Some Guns & Ammo Layton
Get Some Guns & Ammo Orem
Get Some Guns & Ammo Tooele
Gilbert Police Dept.
Glades County Sheriff
Glendale Police Dept.
Glock Inc
Godfrey's Indoor Shooting Range
Gold-N-Pawnd
Gonzales Police Dept.
Goodyear Police Dept.
Governor's Gun Club
Grand Golf Nuclear Plant
Grand Junction Police Dept.
Grand Prairie Police Dept.
Great Falls Police Dept.
Greeley Police Dept.
Greeley Recreation Center
Green Bay Police Dept.
Green River Police Dept.
Greene County Sheriff
Greenfield Police Dept.
Greenville Police Dept.
Grove City Police Dept.
Guardian Academy & Indoor Range
Guardian Training Center
Guilford County Sheriff
Gulf Coast State College
Gun For Hire LLC
Guns and Leather
Guns Gear and Game
Gunworld
Gwinnett County Police Academy
H&H Shooting Sports
Hanover Park Police Dept.
Hardee County Sheriff
Harris County Sheriff's Academy
Harrisburg Police Dept.
Hattiesburg Police Dept.
Hawkeye Community College
Heartland Outdoors
Helen Boosalis Shooting Range
Helena Police Dept.
Henderson Police Dept.
Hennepin Technical College
Henryetta City Police Dept.
Heritage Guild
Hialeah Police Dept.
Hickory Police Dept.
Hidalgo County Sheriff's Off
High Caliber Training
High Noon Indoor Pistol Range
High Point Police Dept.
Highlands County Sheriff
Hill AFB
Hillsborough County Sheriff

Hobbs Police Dept.
Hobbs State Park
Hoffman Estates Police Dept.
Honeywell Technology Solutions
Honolulu Police Dept.
Hope Police Dept.
Houston Police Dept.
Howell's Gun Shop
Hunters' Hollow - Thunder Hollow
ICE-NFTTU
Idaho National Laboratory
Illinois State Police
Independence Indoor Shooting
Indian River State College
Indiana Law Enforcement
Iron County Sheriff
Jack's Pawn & Gun
Jackson County Sheriff
Jackson Police Dept.
Jacksonville Police Dept.
Jacksonville County Sheriff
Jay's Pawn Shop
Jefferson County Sheriff
Jefferson Gun Club
Jefferson Parish Sheriff
Jim's Gun Jobbery
Juneau Mercantile & Armory
Justice Institute of BC
Kansas City Police Dept.
KAP Guns Inc.
Keesler AFB
Kentucky DOC
Kettering Police Dept.-Jail
King County Sheriff
Kirtland AFB
Kissimmee Police Dept.
Knoxville Police Dept.
La Porte City Police Dept.
Ladue Police Dept.
Lafayette Parish Sheriff
Lake Station Police Dept.
Lakewood Police Dept.
Lakewood Shooting Range
Lancaster County Sheriff
Laramie County Shooting Sports
Las Vegas Metro Police Dept.
Last Resort Guns Inc
LAX Firing Range
LeadFeather Guns & Archery
Leander Police Dept.
Legion Operator Training Group
Letterkenny Army Depot
Lewisville Police Dept.
Lexington Police Dept.
Lincoln Police Dept.
Linden Police Chief's Office
Little Rock Police Dept.
Live Oak Police Dept.
Livonia Police Dept.
Lockhart Police Dept.
Long Beach City Police Dept.
Longmont Police Dept.
Los Alamos National Laboratory
Los Angeles County Sheriff
Los Angeles Police Dept.
Lotus Gunworks
Louisiana State Police
Louisiana Wildlife & Fisheries
Louisville Metro Police Dept.

Lubbock County Sheriff
Lubbock Police Dept.
Luke Air Force Base
Lumpkin County Sheriff
M-Tac Precision
Macon County Sheriff
Madison Police Dept.
Manassas Park Police Dept.
Maple Heights Police Dept.
Maplewood Police Dept.
Marc-On Shooting
March Air Force Base Barbersho
Maricopa County Sheriff
Marion County Sheriff
Marion Police
Marshall City Police Dept.
Martin County Sheriff
Martinsburg Police Dept.
Maryland Small Arms Range
Marysville Police Dept.
Matrix International Inc Center
McAllen Police Dept.
Medley Police Dept.
Meherrin River Regional Jail
Memphis International Airport
Memphis Police Dept.
Meridian Police Dept.
Mesa Police Dept.
Mesquite Police Dept.
Metro Nashville Police Dept.
Metro Police Training Academy
Metro Shooting Supplies
Metropolitan Police Dept.
Miami Collge of Police
Miami Dade County
Michigan State Police
Michigan State Police Dept.
Midland Police Dept.
Midwest City Police Dept.
Milpitas Shooting Range
Milwaukee County Sheriff
Miramar Police Dept.
Mississippi County Sheriff
Mississippi Dept of Wildlife
Missouri Dept of Corrections
Mitchell College
Mobile Police Headquarters
Mocksville Police Dept.
Modern Outfitters
Monmouth County Police Acad.
Monroe Police Dept.
Montclair Police Dept.
Montezuma County Sheriff
Montgomery County PSTA
Montgomery County Sheriff
Montgomery Police Dept.
Moody Air Force Base
Moultrie Police Dept.
Mount Weather FEMA
Mountain Brook Police Dept.
Murfreesboro Police Dept.
Murray City Police Dept.
Muscle Shoals Police Dept.
Muscogee County Marshals
Naco Border Patrol Station
Nacogdoches Police Dept.
Napa Rifle and Pistol Club
Naperville Police Dept.
Naples Gun Range & Emporium

Nardis Gun Club
Nashville Armory
Naval Air Station Sigonella
Naval Amphibious Base Coronado
Naval Special Warfare Group 1
Nellis AFB
Neptune Beach Police Dept.
New Braunfels Police Dept.
Newport News Police Dept.
Newton City Police Dept.
Nexus
Nexus Shooting
Nicholasville Police Dept.
Norcross Gun Club
Norfolk Police Dept.
North Carolina Justice Academy
North Florida Community College
Northeast Alabama L.E. Academy
Northeast Texas Comm. College
Northeast Wisconsin Tech. College
Northglenn Police Dept.
Northampton Police Dept.
Northshore
Northwest Shooter
Novi Police Dept.
NRA Headquarters
Odessa Police Dept.
Ohio State Highway Patrol
Okaloosa County Sheriffs
Oklahoma City Police Dept.
Oklahoma County Sheriff
Olive Branch Police Dept.
Omaha Police Dept.
OMB Guns
On Target Sports, LLC
Ontario Police Dept.
Openrange Sports, Inc
Orange County Sheriff
Orlando Police Dept.
Osceola County Sheriff
Osseo Gun Club
Ouachita Parish Sheriff
Outdoor Adventure Center
Osan Air Base
Ozark Police Dept.
Ozark Thunder
Pacific Tactical Indoor Range
Paducah Gaseous Diffusion Plant
Palm Beach County Sheriff
Palm Beach Gardens Police Dept.
Palm Beach State College
Palmetto State Armory
Panthera Training Group
Parkersburg Narcotic Task Force
Pasadena Police Dept.
Pascagoula Police Dept.
Pasco Yaqui Justice Center
Pasco-Hernando Comm. College
Passaic Police Dept.
Paulding County Sheriff
Pelham Police Dept.
Pembroke Pines Police Dept.
Perry Police Dept.
Perrysburg Police Dept.
PGR Queretaro
Phoenix Indoor Range in Edmonton
Phoenix Police Dept.
Picatinny Arsenal
Pickens County Sheriff

Pima County Sheriff
Pinal County Sheriff Office
Pinellas County Sheriff
Plano Police Dept.
Plant Vogtle Nuclear
Pocahontas Correctional Center
Pocatello Police Dept.
Point Blank Range Cincinnati
Point Blank Cincinnati West
Point Blank Greenwood
Point Blank Range & Gun Shop
Polk County County Sheriff
Polk County Sheriff
Portland Police Dept.
Poteau Police Dept.
Potter County Sheriff
PCRJ, Brazil
Premiere Shooting & Training Center
Prince George County Police
Pro Armament Co
ProShots Indoor Range & Training
Putnam County Sheriff
Northshore
QuickShot Shooting Range
Raleigh County Sheriff
Range 118, Germany
Range 54
Range America
Range at 355
Range USA, Inc.
RCMP Chilliwack BC
RD Tactical Solutions
Ready Gunner
Red Deer Shooting Centre
Red Dot Firearms
Reed's Indoor Range
Regina Police Service
ReLoad Range
Rendezvous Range
Reno Police Dept.
Rexburg Police Dept.
Rich's Gun Shop
Richfield Police Dept.
Richland Police Dept.
Richmond County Sheriff
Rickenbacker Air Force Base
Riverdale Police Pistol Team
RKA Gun Gallery
Rockdale County Sheriff
Rockland County
Rockwall Police Dept.
Rocky Mountain Gun Club
Rocky Mountain Shooters Supply
Roll Call 911
Rough Creek Lodge and Resort
RTSP - Range, Firearms & Training
Rutherford County Sheriff
S & D Indoor Range
Sac & Fox Nation
Sacramento Police Dept.
Saint Paul Police Dept.
Sakonnet River Outfitters
Salt Lake City Police Dept.
Samarcand Training Academy
San Angelo Police Dept.
San Antonio Police Dept.
San Diego Police Headquarters
San Francisco Sheriff
San Marcos Police Dept.

San Mateo County Sheriff
San Mateo Police Dept.
San Quentin State Prison
Santa Barbara Sheriff
Santa Monica Police Dept.
Santa Rosa Police Dept.
Santa Rosa Sheriff Office
Sapulpa Police Dept.
Saraland Police Dept.
Sarasota County Sheriff
Saskatoon Police Service
Sauk County
Savannah River Nuclear Solutions
Schoolcraft Community College
Scott AFB
Scottsdale Police Dept.
Seagoville Police Dept.
Seattle Police Dept. Headquarters
Secret Service
Seguin Police Dept.
Seminole State College
Sequoyah Nuclear Plant
Seymore Johnson Base
Shady Oaks Gun Range
Sharpshooters USA
Shawnee Police Dept.
Shelby County Sheriff
Shelby County Sheriff
Sheppard AFB
Sheridan Corrections
Sheriff-Detective
Shoot Indoors
Shoot Smart Indoor Range
Shoot Straight Ft Lauderdale
Shoot Straight Tampa
Shooter's Alley
Shooters Edge, LLC
Shooters World
Shooters' Sports Center
Shooting Sports Northwest
Shreveport Police Academy
Sioux City Police Dept.
Sioux Falls Police Dept.
Skagit Indoor Range
Skagit Shooting Sports
Skokie Police Dept.
Sky Range
Smokin' Gun Worx
Snohomish County Sheriff
South Texas Tactical
Southaven Police Dept.
Southampton County Sheriff
Southlake Police Dept.
Southwest Iowa LETC
Southwest Tech
Spokane Police Dept.
Spring Guns & Ammo
Springfield Police Dept.
St Lucie County Sheriff
St. Charles Parish Sheriff
St. James Parish Sheriff
St. Landry Parish Sheriff
Stevens Point Police Dept.
STL Sharpshooter
STP Nuclear Operating Co
Strongsville Police Dept.
Stuart Shooting Center
Sulphur City Police Dept.
Sumter County Sheriff

Sunnyvale Police Dept.
Sunrise Police Dept.
Sussex I State Prison
Swanson Tactical Training Facility
Tacoma Police Dept.
Tactical Supply - The Range
Tactical Training Centre
Take Aim
Tallahassee Community College
Target Shooting Solutions
Target World
Tarrant County College
Ted's Shooting Range
TEEX
Tejas Shooting Sports
Temecula Border Patrol Station
Templar Shooting Sports
Tennessee Gun Country
Terrebonne Parish Sheriff
Texarkana Police Dept.
Texas Dept. of Public Safety
Texas Game Warden Training
The Alamo
The Arms Room
The Bullet Trap
The Cabin Armory
The City of Modesto
The Clarksville Police Dept.
The Gun Store
The Gun Vault
The Gun Warehouse & Range
The Limon Correctional Facility
The Range at Austin
The Range at Lake Norman
The Royal Hawaiian
The Sharp Shooter
The Shooting Edge
Thomasville Police Dept.
Three Sights Indoor Shooting Range
Thunderbird Tactical
TNT Guns and Range
Tonopah Test Range
Top Gun
Toronto Police Service
Tracy Rifle and Pistol
Travis County Sheriff
TriTac Shooting Solutions
Troup County Sheriff
Troy Police-Secret Witness
Trussville Police Dept.
Tucson Police Dept.
Tulsa County Sheriff
Tulsa Police Dept.
Tupelo Police Dept.
Turlock Police Dept.
Tuscaloosa Police Dept.
Tyler Police Dept.
U.S. Border Patrol , Del Rio Sector
U.S. Border Patrol, Fabens
Umarex USA Inc
Union County Sheriff
Union Police Headquarters
University of Texas, Austin
US Army Dept.
US Border Patrol, San Diego
US Browns Ferry Nuclear Plant
US Coast Guard
US Nuclear Regulatory Commission
US Post Office

US Prison Bureau
US Shooting Academy
Utah County Sheriff
Utah Highway Patrol
VA Dept of Corrections
Valdosta Crime Lab
Vandalia Range and Armory
Veterans of Foreign Wars
Vidalia Police Dept.
Vilonia Police Dept.
Virginia Military Institute
Visalia Police Dept.
Volunteer Ordnance Works
Volusia County Sheriff
Volusia Top Gun
Waco Police Dept.
Wade's Eastside Guns
Wadsworth Police Dept.
Wake County Sheriff
Wake Forest Police Dept.
Wake Technical Comm. College
Wall Township Police Dept.
Walton County Sheriff
Wapakoneta Police Dept.
Warner Robins Police Dept.
Warrenton Training Station
Washington County Sheriff
Waterloo Police Dept.
Watertown Police Dept.
Watts Bar Nuclear Power Plant
Waukesha County Tech. College
Wayne County Airport
Webb County, Crime Lab
Weirton Police Dept.
West Coast Armory
West Des Moines Police Dept.
West Virginia State Police
Westchester County Sheriff
Westinghouse Nuclear
Westminster Police Dept.
Weston Shooters Club
Wharton County Junior College
Wheeling Police Dept.
Whistling Pines Gun Club
Whitehouse Police Dept.
Wichita County Sheriff
Wichita Falls Police Dept.
Wichita Police Dept.
Williamson County Sheriff
Wilshire Gun
Wilson Private Range
Winnipeg Police Service
Winston-Salem Training Academy
Winter Haven Police Dept.
Winter Park Police Chief
Wise County Sheriff Dept.
Woodway Public Safety Dept.
Wright-Patterson AFB, OH
X-Ring Security
Xtreme Precision Armaments
York County Sheriff
York Regional PS

INDEX

After action review system
92, 99, 108, 118

Air Command wireless control system
96, 104, 148, 168

American Series shooting stalls
35

AutoTargets™
32, 80, 91

AWD Pro™ target retriever
8, 9, 21, 22, 32, 35, 36, 38, 43, 47, 48,
60, 62, 64, 80, 84

Ballistic sliding door
100, 143, 182

Bobber Xtreme reactive steel target
96, 105, 113, 124, 146, 149, 151, 155

Commercial indoor shooting range
20, 21, 22, 23, 24, 25, 26, 27, 28, 29, 30,
31, 32, 34, 35, 36, 38, 39, 40, 41, 42, 43,
44, 45, 46, 47, 48, 49, 50, 51, 52, 53, 54,
55, 56, 57, 58, 59, 60, 62, 63, 64, 65, 66,
67, 68, 69, 70, 71, 72, 73, 74, 75, 76, 77,
78, 80, 81, 82, 83, 84, 86, 87, 88, 90, 91

Defender™ shooting stall
20, 21, 22, 23, 24, 25, 26, 27, 28, 29, 30,
31, 32, 34, 36, 38, 40, 41, 42, 43, 44, 45,
46, 47, 48, 49, 50, 51, 52, 53, 56, 58, 59,
60, 62, 63, 65, 66, 67, 68, 70, 71, 72, 74,
75, 76, 77, 78, 81, 82, 83, 86, 87, 88, 90,
91, 103, 144, 157, 167, 175

Deluxe 90 turning target
96, 168, 171

Deluxe KD reactive steel target
113

DRM Pro™ moving target
102, 121, 156, 179

DTaPS turning target
50, 69, 73, 95, 102, 104, 107, 110, 113, 122,
123, 126, 138, 139, 143, 145, 146, 148, 149,
150, 161, 162, 169, 172, 174, 177, 178

Dust collection unit
41, 48, 53, 54, 55, 69, 73, 78, 86, 88, 97,
102, 103, 106, 120, 122, 123, 125, 134, 138,
145, 146, 148, 149, 152, 156, 159, 161, 166,
169, 174, 175

Fixed Lateral 360 turning targets
106, 119, 121, 133, 134, 142, 154, 156, 157,
166, 179

Fixed position ceiling baffles
20, 23, 24, 25, 26, 27, 32, 34, 35, 36, 39,
42, 43, 44, 46, 50, 51, 52, 53, 55, 56, 58,
59, 62, 63, 67, 68, 69, 70, 71, 72, 73, 75,
76, 78, 80, 82, 84, 86, 87, 90, 91, 137

Fixed Turning Target Stands
101

Law enforcement indoor shooting range
102, 103, 106, 113, 114, 115, 116, 119, 120,
121, 122, 123, 126, 127, 128, 133, 134, 137,
139, 142, 144, 145, 146, 148, 149, 150, 152,
154, 156, 157, 160, 162, 163, 166, 167, 169,
170, 173, 174, 175, 177, 178, 179

Law Enforcement outdoor shooting range
94, 95, 96, 98, 101, 110, 113, 119, 124, 132,
135, 136, 138, 143, 155, 164, 165, 168, 176

Law Enforcement semi-enclosed shooting
range
97, 104, 125, 151, 153, 161, 172

Line of Fire™ target system
95, 96, 105, 151, 155, 168

Mancom™ AWD target retriever
44, 58, 76, 87, 88, 116, 167

Mancom™ Dual Running Man moving target
106, 119, 133, 134, 145, 158, 175

Mancom™ Touch-N-Go target retriever
22, 27, 36, 38, 44, 45, 50, 56, 58, 59, 62,
67, 72, 73, 78, 80, 86, 137

Mancom™ Touch Plus target retriever
20, 23, 24, 27, 28, 39, 40, 41, 42, 43, 45,
49, 53, 59, 63, 65, 67, 78, 83, 103, 127,
129, 145, 153, 157, 158, 160, 170, 175

Master control system
41, 48, 103, 119, 127

MATCH™ shoot house
92, 94, 95, 98, 99, 100, 105, 107, 108, 111,
112, 118, 135, 141, 143, 153, 163, 164, 168,
169, 176

Military range
92, 99, 100, 105, 107, 108, 118, 129, 130,
131, 140, 158, 159, 171

Overhead catwalk
98, 100, 105, 111, 112, 143, 153, 168

PA system
104, 128, 161, 174

PEPP sound abatement material
21, 22, 24, 28, 29, 30, 34, 35, 38, 45, 47,
48, 49, 58, 64, 70, 72, 74, 80, 82, 83,
87, 104, 106, 134, 142, 144, 150, 154, 156,
157, 162, 167, 171, 173, 174, 177, 178, 179

Pneumatic Plate Rack
100

Portable bullet traps
98, 112, 141, 143

Power 90 turning target
10, 74, 94, 97, 100, 120, 124, 125, 135,
136, 151, 152, 160, 163, 164, 173, 176

Range ventilation system
18, 21, 24, 26, 28, 40, 41, 44, 45, 49, 50,
52, 63, 64, 66, 70, 72, 76, 80, 82, 84,
87, 88, 108, 128, 139, 145, 148, 156, 161,
169, 174

Rubber Berm Trap
4, 31, 32, 34, 35, 38, 43, 44, 47, 57, 65,
71, 75, 77, 82, 83, 90, 94, 119, 137, 142,
150, 162, 170, 171

Screw Conveyor System
23, 24, 25, 27, 36, 39, 41, 49, 53, 54, 55,
58, 64, 67, 73, 76, 87, 88, 95, 103, 113,
114, 115, 116, 120, 121, 124, 125, 128, 140,
146, 148, 149, 151, 154, 159, 160, 163, 166,
167, 169, 173, 178, 179

Sentry™ shooting stall
158

SmartRange master control system
77, 96, 104, 122, 128, 135, 139, 145, 146,
148, 151, 155, 161, 169, 172, 174, 178

SmartRunner moving target
113, 172

SRET target retrievers
8, 20, 23, 24, 25, 26, 29, 30, 31, 34, 39,
42, 46, 47, 51, 52, 55, 57, 60, 64, 66, 68,
69, 70, 71, 74, 75, 77, 81, 82, 83, 84, 88,
90, 91, 123

Steel KD reactive steel target
105

TAC House™
108

Tactical Breach Door
100, 105, 108, 111, 112, 141

Tactical ceiling baffles
22, 25, 28, 30, 40, 43, 44, 45, 55, 57,
64, 67, 74, 78, 80, 91, 97, 98, 102, 104,
107, 114, 115, 116, 119, 120, 121, 122, 123,
125, 126, 127, 129, 133, 135, 139, 140, 142,
144, 146, 148, 149, 150, 151, 152, 153, 154,
156, 157, 158, 160, 161, 162, 163, 166, 167,
169, 170, 171, 173, 174, 176, 177, 178, 179

Tandem 90 turning targets
132, 135

Total Containment Trap™
20, 21, 22, 23, 24, 25, 26, 27, 28, 30, 32,
36, 39, 40, 41, 42, 45, 46, 48, 49, 50,
51, 52, 53, 54, 55, 56, 58, 59, 60, 63, 64,
66, 67, 68, 69, 70, 72, 73, 74, 76, 78, 80,
81, 84, 86, 87, 88, 91, 95, 97, 98, 101, 102,
103, 104, 106, 107, 113, 114, 115, 116, 120,
121, 122, 123, 124, 125, 126, 128, 129, 130,
131, 132, 133, 134, 135, 138, 139, 140, 144,
145, 146, 148, 149, 151, 152, 153, 154, 156,
157, 158, 159, 160, 161, 163, 164, 165, 166,
167, 169, 173, 174, 175, 176, 177, 178, 179

TrackRunner moving target
94, 96, 97, 100, 104, 105, 110, 113, 114,
120, 122, 123, 124, 125, 128, 135, 136, 138,
139, 145, 146, 148, 160, 161, 162, 163, 164,
168, 169, 173, 176, 178

Universal 90 target system
105, 126, 146

Wall baffles
32, 69, 91, 107, 116, 119, 121, 122, 123, 127,
133, 137, 142, 149, 156, 162, 163, 166, 170,
176, 177, 179

Wireless master control system
113, 133, 134, 142, 175

COMING SOON

Action Target ranges are being built every day.
Here are some you can expect to open in the near future.

NORTH WEST U.S. / CANADA

Portland Police Bureau, Portland, OR
Energy Northwest, Richland, OR
Washington County Public Safety &
Training Center, Hillsboro, OR
Cedar Rapids Police, Cedar Rapids, IA
Sioux Falls Police, Sioux Falls, SD
Lincoln Police, Lincoln, NE
Securite Gun Club, Woodinville, WA
Wyoming Gun Company, Casper, WY
Zero In Shooting Center, Bozeman, MT
Highwood Creek Shooting Range,
Great Falls, MT

NORTH CENTRAL U.S.

Joplin Centerfire, Joplin, MO
Trigger Action Sports, Appleton, WI
Bear Arms, Mequon, WI
Dead On, Cloquet, MN
Walworth County Sheriff, Elkhorn, WI
Frontier Justice, Kansas City, KS
River's Edge Tactical, Valley City, OH
Macomb Community College, Warren, MI
Huron Valley Guns, New Hudson, MI
Great American Shooting Sports,
Massillon, OH

MILITARY

Offut Air Force Base, NE
US Coast Guard Ketchikan, AK
Department of National Defense,
Petawawa, Ontario
US Army Fort Riley, KS
US Navy Fort Worth, NAS, TX

NORTH EAST U.S. / CANADA

717 Armory, Harrisburg, PA
Burkes's Gun Shop, Laceyville, PA
Chester County Public Safety Training Center,
Coatsville, PA
Donnacona Correctional Facility,
Donnacona, Quebec
Groton Police Department, Groton CT
Halton Regional Police Service, Oakville,
Ontario
York Regional Police Service, Vaughan, Ontario
Hot Brass, West Springfield, MA
Elite Indoor Gun Range, South Kingstown, RI
Safeshoot, Kingston, NY
Penn Hills Police Department, Penn Hills, PA
Stamford Police Department, Stamford, CT

SOUTH WEST U.S.

C2 Tactical, Scottsdale, AZ
Cal Fire Police Academy, Lone, CA
Fort Collins PD, CO
North County Firearms, San Marcos, CA
Tempe PD, AZ
The Shootist, Englewood, CO
US Mint, Denver, CO
Caliber Club, Gilbert, AZ
Santa Clara County Sheriffs, Metcalf, CA
Franktown Firearms, Franktown, CO

Whiteman Air Force Base, MO
Fort Chaffee Maneuver Training Center, AR
Hill Air Force Base, UT

SOUTH CENTRAL U.S.

Tejas Shooting Sports, Odessa, TX
Sendero Shooting Sports, Belton, TX
Deer Park PD, Deer Park, TX
Buck and Doe Merchantile, San Antonio, TX
Ally Outdoors, Midland, TX
Texas Gun Club, Stafford, TX
Nardis #2, San Antonio, TX
Wichita County Sheriffs Office,
Wichita Falls, TX
Eagle Gun Club #2, Farmers Branch, TX
High Caliber, Wichita Falls, TX
Range 806, Lubbock, TX
Crossfire Defense Academy and Range,
Flower Mound, TX
Verdure, Amarillo, TX
Austin Community College, Austin, TX

MID ATLANTIC U.S.

Fairfax City PD, Fairfax, VA
Reloaderz NJ, Wayne, NJ
Defense in Depth, Morgantown, WV
Virginia State Police, Richmond, VA
Raleigh CSO, Raleigh County, WV

SOUTH EAST U.S.

Governors Gun Club, Kennesaw, GA
Top Gun Indoor Range, Miami, FL
Cullman Shooting Sports, Cullman, AL
West Armory, Dade City, FL

INTERNATIONAL

Thailand
UAE
Albania
Bahrain
Egypt

Estonia
Indonesia
Ireland
Norway
Oman



BETTER EQUIPPED. BETTER PREPARED.™
3411 S Mountain Vista Pkwy / Provo, UT 84606
801.377.8033 / ActionTarget.com

    #ActionTarget