



SHOOT HOUSES



ActionTarget.com



PREPARE YOUR TEAM FOR WHAT AWAITS

Action Target shoot houses provide specialized training equipment for those who serve and protect. With modular live-fire and training ammunition panel options and numerous training accessories, our shoot houses are sure to prepare your team for what they will encounter.



MATCH™ SHOOT HOUSE

MATCH revolutionized shoot houses more than 20 years ago and continues to set the standard in creating the best live-fire training atmosphere. Using a relatively small number of parts, MATCH houses are able to be configured into any number of designs for small, medium, and large shoot houses. Also, the MATCH system uses steel core wall panels that stack compactly and assemble quickly. This approach

allows an entire shoot house building to be shipped inside a single 20-foot container. Once the parts arrive on-site they can be assembled completely without welding. The unique MATCH design reduces through-life costs by implementing multiple fascia options, through-hardened steel, and accessories that reduce maintenance while providing the safest environment.



BALLISTIC

Live-fire shoot house with handgun, shotgun, and rifle rated options.



MODULAR

Utilizes interchangeable parts and numerous training accessories.



CONNECTED

Integrates with central range control software for advanced features and functionality.



CUSTOMIZABLE

MATCH can be custom engineered to meet the specific needs of any agency.



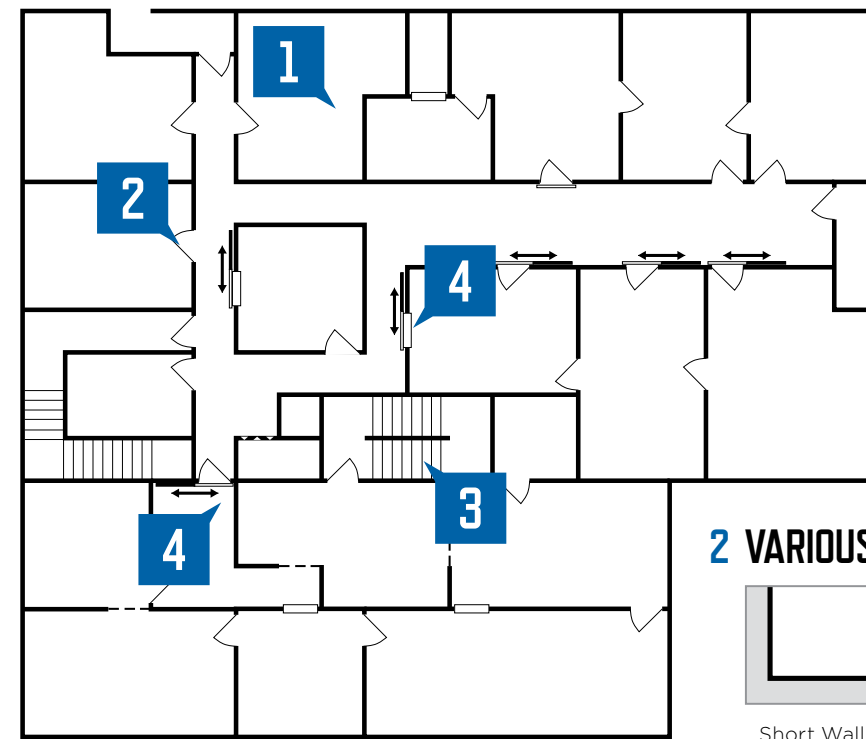
CLEAN AND SAFE

Splatter containing walls, zero SDZ design, and ventilation provide a safe training environment.



ENGINEERED

Every aspect of MATCH is carefully engineered to provide the best shoot house possible.

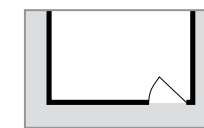


1 REALISTIC ROOM SHAPES

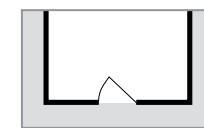
MATCH utilizes 6 and 9 inch thick wall panels that mimic realistic environments and can be assembled in nearly any configuration.

- **Flexible Number of Rooms:** MATCH can add as many rooms as your training needs require.
- **Adaptable Room Sizes:** Room sizes vary from 16 to more than 1,000 square feet.
- **Various Room Types:** Rooms can be set up in short wall right, short wall left, center entry, multiple entry, irregular, irregular with hidden areas, and long configurations. Rooms can also include closets, balconies, hidden, areas and more to enhance training exercises. Hallways are also easy to configure.

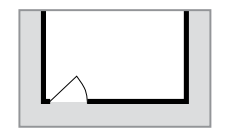
2 VARIOUS ROOM ENTRIES



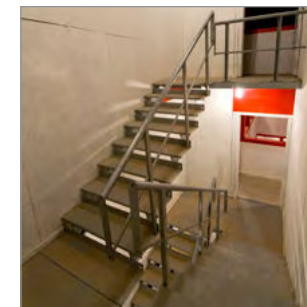
Short Wall Right



Center



Short Wall Left



3 MULTIPLE LEVELS

MATCH can be configured with up to three levels. This gives training facilities the ability to replicate sniper shots, stairway clearance, and balcony.

- **Single Story Plans:** Set up your shoot house for realistic single level training exercises.
- **Two and Three Story Plans:** MATCH utilizes a proprietary design to allow ballistically safe training on multiple levels. Houses are engineered to comply with local seismic codes.
- **Stairwells:** Open, closed, outside, and "L" and "U" shaped stairwells are available.



4 RECONFIGURABLE ROOMS

MATCH uses sliding ballistic panels to allow trainers to change the room configuration and paths through the house quickly and easily while maintaining zero SDZ. Available in window and wall options.

- **Change Entry Points:** Create multiple entry configurations including corner, center, and window entries, simply by moving a panel. Easily change the flow of the house or divide it in two for simultaneous training.
- **Change Room Layout:** Target systems and bullet traps are able to be placed in multiple locations without hurting the ballistic integrity of the room.



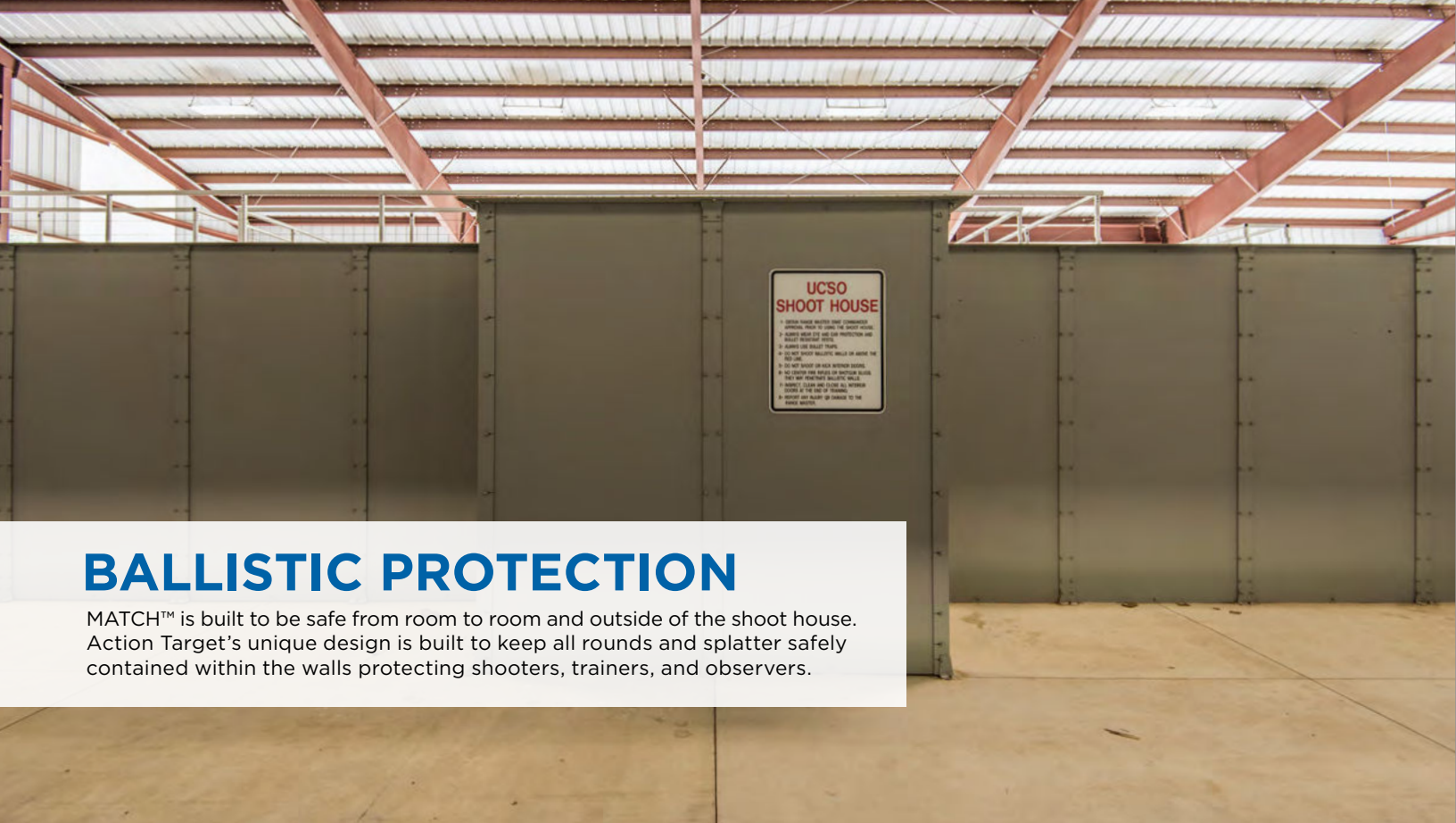
5 SHOOT HOUSE VILLAGES (MOUT)

Sometimes one MATCH is not enough. In these cases it takes a village. Shoot house villages allow for more advanced training scenarios and simultaneous urban training.

- **Roof to Window Sniper Training:** Having a shoot house village allows training between buildings including sniper shooting through windows.
- **Urban Environment Exercises:** Villages create open space where vehicles such as helicopters and APC's can be used for advanced deployment and extraction exercises.



Learn more about MATCH™ shoot houses
ActionTarget.com/MATCH



BALLISTIC PROTECTION

MATCH™ is built to be safe from room to room and outside of the shoot house. Action Target's unique design is built to keep all rounds and splatter safely contained within the walls protecting shooters, trainers, and observers.

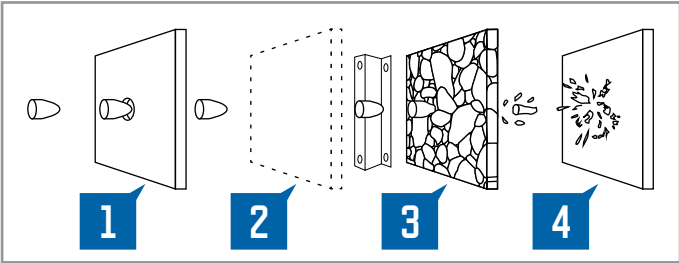


SPLATTER CONTAINMENT

MATCH wall panels use a specially engineered method to capture rounds and completely contain splatter, protecting shooters, trainers, and observers from injury. Surfaces can be painted to indicate no shoot zones or to replicate real indoor surfaces.



Wood Panel Fascia: The wood panel fascia comes with or without rock filling.



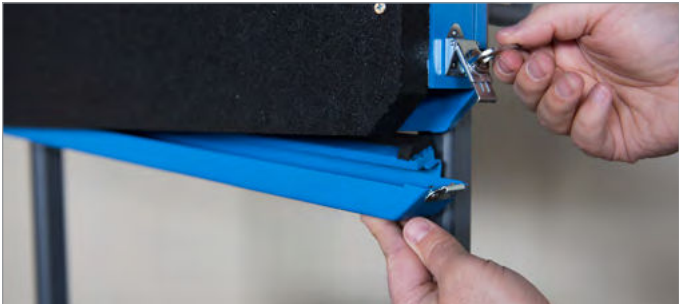
MATCH walls utilize a unique splatter containment design.

- 1 Fascia:** A rubber or wood fascia contains bullet splatter.
- 2 Air Space:** A z-furring strip creates room for the bullet to fully fragment on the steel plate.
- 3 Optional Gravel Fill:** Wood panel fascia may use a gravel fill with a rubber membrane to improve the life of the panel by reducing the energy on the steel plate. Using panels without a gravel fill significantly reduces the panel inspection time.
- 4 Steel Core:** Ballistic steel ensures all rounds are safely captured within the wall.

SDZ AND VDZ RATED LAYOUTS

MATCH provides a viable training environment with a zero Surface Danger Zone (SDZ) both inside and outside the structure. This is contained through ballistic wall panels and bullet-trapping fascia. MATCH walls are engineered to easily accept a ballistic roof system to create a zero Vertical Danger Zone (VDZ).

- Ballistic Rated:** ATI Class 1 (handgun) and ATI Class 2 (rifle) rated options are available.
- Patented Gap Free Design:** Panels fit together and are sealed to eliminate gaps where rounds can escape the shoot house horizontally, even in corners and around doors.
- Ballistic Ceiling Ready:** MATCH walls are built to accept a ballistic ceiling without modification to provide VDZ protection.
- Safe Entry Points:** Safety walls or sliding ballistic panels to maintain a zero SDZ around entry points.



All Terrain Wheel



Brass Deflecting Wheel

PORTABLE BULLET TRAP NEW

Portable bullet traps extend the life of the shoot house by capturing rounds in an easy to maintain facade. Strategic placement of bullet traps can reduce the amount of rounds fired into the shoot house walls by as much as 90%. The trap is large enough to accept standard size paper and cardboard targets and they are easily attached with staples or pins.

- Extends Shoot House Life:** Properly utilizing portable bullet traps will extend the life of your shoot house indefinitely.
- Splatter Free:** All rounds are completely contained within the trap protecting shooters and other people inside the shoot house from injury from bullet splatter and ricochet.
- Replaceable Facade:** Over time the rubber layer on the outside of the trap will wear out. Replacing this is easy and much less expensive than replacing walls in the shoot house.
- Mobile:** A locking wheel base makes the trap easy to move throughout the shoot house. Both an indoor, brass-shedding and an outdoor, all-terrain wheel option is available.
- Easy-Empty Base:** The bottom of the trap opens up to empty bullet splatter from the trap into a container for recycling.

PORTABLE BULLET TRAP FEATURES

DIMENSIONS	W x H x T (in inches)	30.5 x 29.0 x 72.0
	Weight	340 lbs.
AMMUNITION RATING	ATI Class 1 (Handgun)	■
	ATI Class 2 (Rifle)	■
FEATURES	Replaceable Facade	■
	Easy Empty Tray	■
	All Terrain Wheel	○
	Brass Deflecting Wheel	○
■ Standard Feature		○ Optional Feature

BREACH ACCESSORIES

MATCH™ is ideal for all forms of forced entry training. Available accessories provide advanced room clearing training including searching for hiding areas and secret tunnels.

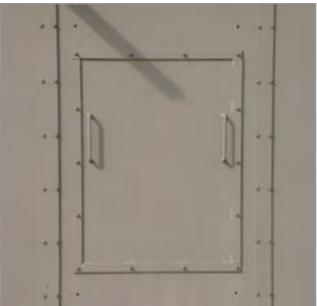
TACTICAL BREACH DOOR

The Tactical Breach Door is the ultimate mode of entry training tool. It's advanced design is ideal for every type of forced entry training. The door is available in both left and right hinge options.

- **Battering Ram Breaching:** An adjustable latch system can be set to varying degrees of force including kicking and hitting with a battering ram. The latch simply has to be reset for reuse and does not require consumable pins.
- **Shotgun Breaching:** A disposable wooden dowel in the door latch allows for shotgun breach training.
- **Explosive Breaching:** The breach door can be used for explosive breach entry.
- **Freestanding Frame Option:** An available freestanding option allows the Tactical Breach Door to be used on any concrete pad.

TACTICAL BREACH DOOR FEATURES

DIMENSIONS	W x H x T (in inches)	36.0 x 81.75
LATCH SETTINGS	Kick	▪
	Heavy Kick	▪
	Shoulder	▪
	Battering Ram	▪
DOWEL	Shotgun Breach	▪
	Explosive Breach	▪
CONFIGURATION	Left Door Frame	▪
	Right Door Frame	○
	Free Standing Frame	○
▪ Standard Feature ○ Optional Feature		



ROOF BREACH / RAPPELLING

Installing a ballistic roof breach door into a MATCH safety ceiling allows entry from the roof.

- **Panel Ready:** Pre-drilled holes easily accept plywood or rubber panels for cutting or explosive breach training.
- **Rappelling Anchor:** An available anchor accepts climbing ropes for rappelling into a room.



TUNNELS

Custom built underground tunnels can connect rooms within a MATCH shoot house or connect multiple houses within a village.



WALL BREACH

An available wall breach panel allows training for standard cutting and explosive breach training through a wall. Wall breach panels can also be installed on interior walls to create hiding spaces.

VENTILATION

DUCT NEW

Custom ventilation ducts with removable fans can be installed for enhanced entry and extraction training techniques.

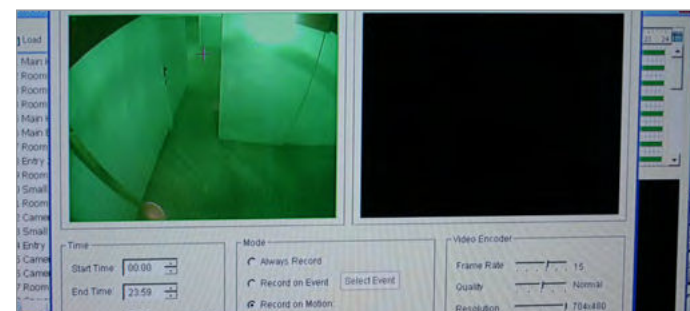
AFTER ACTION REVIEW

Custom integrated instrumentation dramatically enhances the effectiveness of after action review procedures. With these systems, trainers are able to safely observe and assess trainees' retention and execution.



CAMERA SYSTEMS

Closed circuit cameras allow for remote observation and evaluation. Cameras are contained in a protective housing.



VIDEO RECORDING

Various recording devices can be added to the system to provide trainers the ability to review training scenarios with the trainee.

AUDIO SYSTEMS

PA and other audio systems help trainers communicate with trainees as well as give them the ability to pipe sound effects into the house, enhancing the reality of the training.



MONITORING

Display monitors are available in all sizes and aspect formats. Integrated with the Action Target SmartRange™ system allows trainers to observe multiple rooms at the same time or switch between cameras.

ADDITIONAL ACCESSORIES

Every detail of MATCH™ is carefully designed to provide the safest and best live fire training environment possible. These important accessories will ensure that your trainees are prepared for whatever they may encounter.



CATWALKS

Catwalks span across the top of a single story shoot house to give visual access to all rooms of the facility so controllers can provide instant feedback and instruction to trainees below.

- **Heavy Duty Steel:** Catwalks are structurally built to support multiple observers, trainers, and VIPs safely. The rugged design will hold up to years of continuous use.
- **Weather Resistant:** Steel parts are hot dip galvanized to prevent rust and ensure long life, eliminating the need to paint, stain, or seal the catwalk system. The wood free design is also impervious to weather cracking and rot.
- **Flexible Configurations:** The modular floor and rail design allows our design team to create the ideal fit for any shoot house.



VENTILATION

Keeping a facility clear from lead dust and other airborne materials is an essential part of creating a safe atmosphere for shooters and trainers alike. Action Target provides the best solutions for properly ventilating a shoot house. Various options are available to fit the needs of each house configuration.



LIGHTING

Lighting can have a dramatic impact on a MATCH™ facility. From low-light, to bright-light training and everything in between, lights are essential to recreating real-world scenarios. Action Target offers a number of options to fit the specific needs of each agency.

- **Advanced Control:** Lights can be controlled in each room, with automatic sensors, and from the control room.
- **Safe:** Lights are contained within explosion resistant housings.
- **Low Maintenance:** Lights can be replaced with a simple power outlet. Nothing is hardwired or hidden behind walls reducing the time required to replace any fixtures.



RAPID ARMOR PANEL NEW

The Rapid Armor Panel is a bolt-on accessory that extends the life of steel panels as they wear over time. This after market product is simple to install and significantly reduces the through-life cost of the shoot house.

TAC HOUSE™

NEW

The Training Ammunition Combat (TAC) House is a non-ballistic training tool for adaptive urban assault, building search and clearing as well as force-on-force training. Designed for use with simulated ammunition rounds, marking cartridges, or blanks. Teams can train with their own converted duty weapons. The modular design of the TAC House allows trainers the ability to rapidly convert any outdoor or indoor

space into a realistic tactical training facility. The TAC House provides a true-to-life training environment with solid walls and real doors. The panels are engineered to interlock with each other provide maximum stability and a precise fit and finish. When used outdoors, they can withstand rain and humidity as well as winds up to 40 mph.



NON-LETHAL

For use with Simunition FX™, Force on Force™, and Man Marker™ rounds.



MODULAR

Interchangeable parts can be configured in nearly any layout and allow for future expansion.



LIGHTWEIGHT

Requires only two people for assembly and take down.



OUTDOOR RATED

Perfect for training indoors and outdoors in any flat, open space.



DURABLE

Quality panels are built to stand up to years of use in training scenarios.



Learn more about TAC House™
ActionTarget.com/TAC_House

QUALITY ENGINEERING



TRAIN WITH PURPOSE

Ideal for low light, force on force, active shooter, urban assault, mission planning and walkthroughs. Your personnel will be prepared for the challenging reality they face.

PRECISE FIT AND FINISH

Every panel is built and assembles for flat and flush connections. This creates a stable structure that is forgiving on uneven surfaces, in inclement weather, or through intense wall impacts during training.

AVAILABLE PANELS

TAC House has 5 available panels making it easy to set up unique rooms and house configurations. Left and right swinging doors are available, but not shown.



Door Panel



Wall Panel



Window Panel



EASY TO RECONFIGURE

Each structure kit comes with all the necessary components to assemble multiple layouts and floor plans.

- **Fast Assembly:** In only a few hours you can create a new and unique training environment.

EASY TO DEPLOY

All kits ship on standard double pallets to fit in any container or commercial truck.

AVAILABLE CONNECTION JOINTS

With the TAC House connection joints you are able to set your training facility in any way imaginable. Additional parts are warehoused for fast delivery.



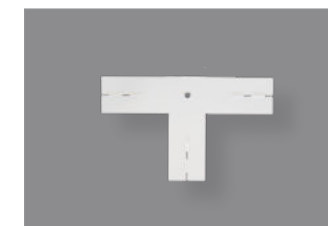
End Cap



"L" Joint



"I" Joint



"T" Joint



"X" Joint

TAC House™ is available in four standard kits to make ordering easy for whatever configuration your agency may need. Additional components are warehoused for quick delivery to expand the size of your kit. Each kit provides enough materials to assemble multiple house layouts. Custom kits are also available.

KIT 2 Houses up to 800 total sq/ft.

PANELS
 43 Wall
 1 Window
 3 Left Door
 3 Right Door
 2 Open Door
 50 Posts

JOINTS
 58 "L" 2 "X"
 18 "I" 2 End
 18 "T"

HOUSE 8 **HOUSE 6** **HOUSE 3**

SHOOT HOUSE PANEL COMPARISON

SHOOT HOUSE PANEL COMPARISON		TAC HOUSE NON-LETHAL	MATCH ATI CLASS 1 HANDGUN	MATCH ATI CLASS 2 RIFLE
DIMENSIONS	Panel Size (W x H x D)	4-ft x 8-ft x 4-inch	4-ft x 8-ft*	4-ft x 8-ft*
AMMUNITION RATING	Non-Lethal	■	■	■
	Standard Pistol		■	■
	Standard Rifle			■**
	Breach/Explosives		■	■
PANEL STYLE	Solid Wall	■	■	■
	Window	■	■	■
	Door	■	■	■
FASCIA	Plywood Panel	■	■	■
	Plywood Panel will Rock Fill		■	■
	Rubber Panel		■	■
	Rubber Block (Custom)		○	○
■ Standard Feature ○ Optional Feature *Thickness: Wood 6-inch, Rubber 9-inch **Not approved for M855AI or M80 AI				

SHOOT HOUSE COMPATIBLE ACCESSORIES		TAC HOUSE NON-LETHAL	MATCH ATI CLASS 1 HANDGUN	MATCH ATI CLASS 2 RIFLE
DOORS	Standard Door	■	■	■
	Tactical Breach Door		○	○
SLIDING BALLISTIC PANELS	Sliding Door/Wall Compatible		○	○
	Sliding Window Compatible		○	○
CEILING	Safety Ceiling		○	○
AFTER ACTION REVIEW	Camera Systems	■	○	○
	Audio Equipment		○	○
	Central Range Control Integration		○	○
LIGHTING	Light Option 1		○	○
	Light Option 2		○	○
■ Standard Feature ○ Optional Feature				

PANEL MATERIAL	ATI Class	Caliber Rating	Maximum Velocity	Maximum Energy	Compliance
Steel Core	ATI Class 1	Pistol	1,485 fps	1,175 ft/lbs	UL752 Level 3
	ATI Class 2	Rifle*	3,388 fps	3,600 ft/lbs	UL752 Level 5,7,8,9,10

* Not rated for armor piercing, atypical ammunition, M855 AI, or M80 AI. Big bore rounds can be used with the following limitations:
.338 Lapua: 3,000 fps & 4,850 ft/lbs, .50 BMG: 2,750 fps & 9,934 ft/lbs

SHOOTING RANGE PRODUCTS



TURNING TARGET SYSTEMS



BULLET TRAPS



RUNNING MAN TARGETS



BETTER EQUIPPED. BETTER PREPARED.™

📍 3411 S Mountain Vista Pkwy / Provo, UT 84606

☎ 801.377.8033 / 📠 801.377.8096 / 🌐 [ActionTarget.com](https://www.ActionTarget.com)